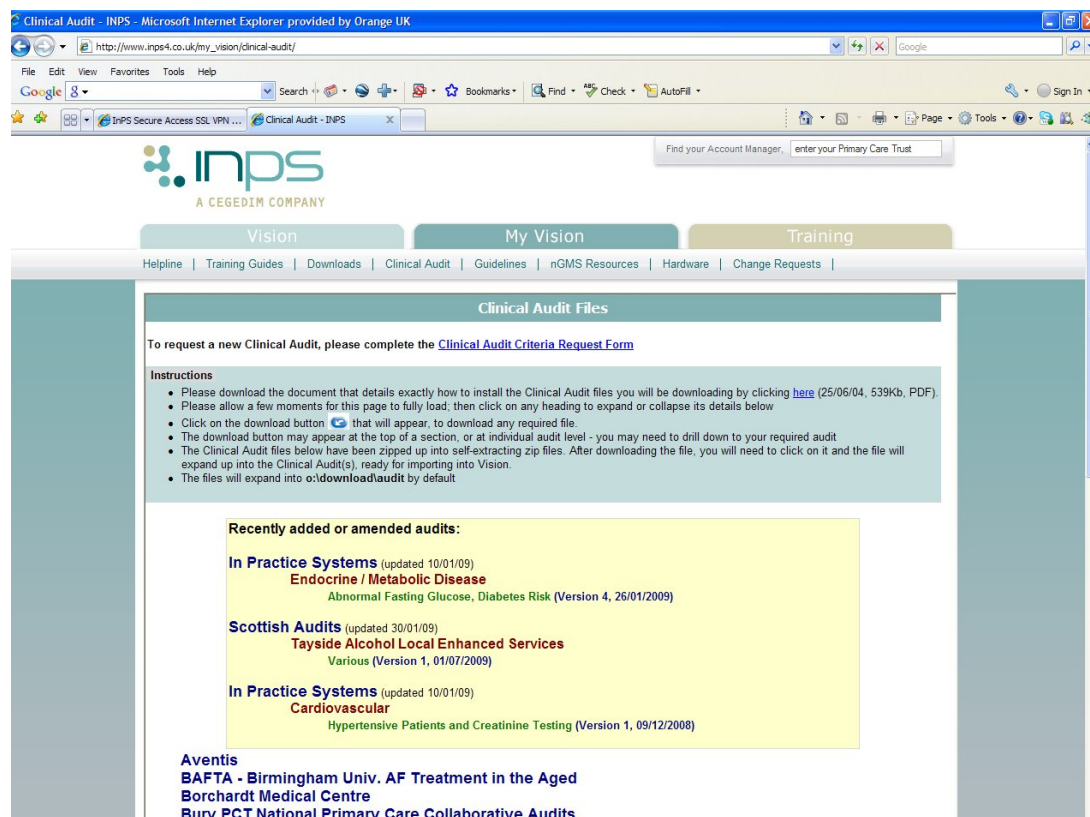


Clinical Audits - Downloading from website and Importing

Audits on the INPS website

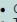
From time to time, new or amended audits are placed on the INPS website. These can be downloaded, unzipped and imported into Vision. Audits of general interest usually come under the In Practice Systems heading. Others are specifically requested, for example, by practices or PCTs. You will find a Clinical Audit Criteria Request Form in My Vision - Clinical Audit.



The screenshot shows a Microsoft Internet Explorer browser window displaying the INPS website. The address bar shows the URL: http://www.inps4.co.uk/my_vision/clinical-audit/. The website header includes the INPS logo (A CEGEDIM COMPANY) and navigation tabs for Vision, My Vision, and Training. Below the navigation is a menu with links: Helpline, Training Guides, Downloads, Clinical Audit, Guidelines, nGMS Resources, Hardware, and Change Requests. The main content area is titled "Clinical Audit Files" and contains the following text:

To request a new Clinical Audit, please complete the [Clinical Audit Criteria Request Form](#)

Instructions

- Please download the document that details exactly how to install the Clinical Audit files you will be downloading by clicking [here](#) (25/06/04, 539Kb, PDF).
- Please allow a few moments for this page to fully load; then click on any heading to expand or collapse its details below
- Click on the download button  that will appear, to download any required file.
- The download button may appear at the top of a section, or at individual audit level - you may need to drill down to your required audit
- The Clinical Audit files below have been zipped up into self-extracting zip files. After downloading the file, you will need to click on it and the file will expand up into the Clinical Audit(s), ready for importing into Vision.
- The files will expand into o:\download\audit by default

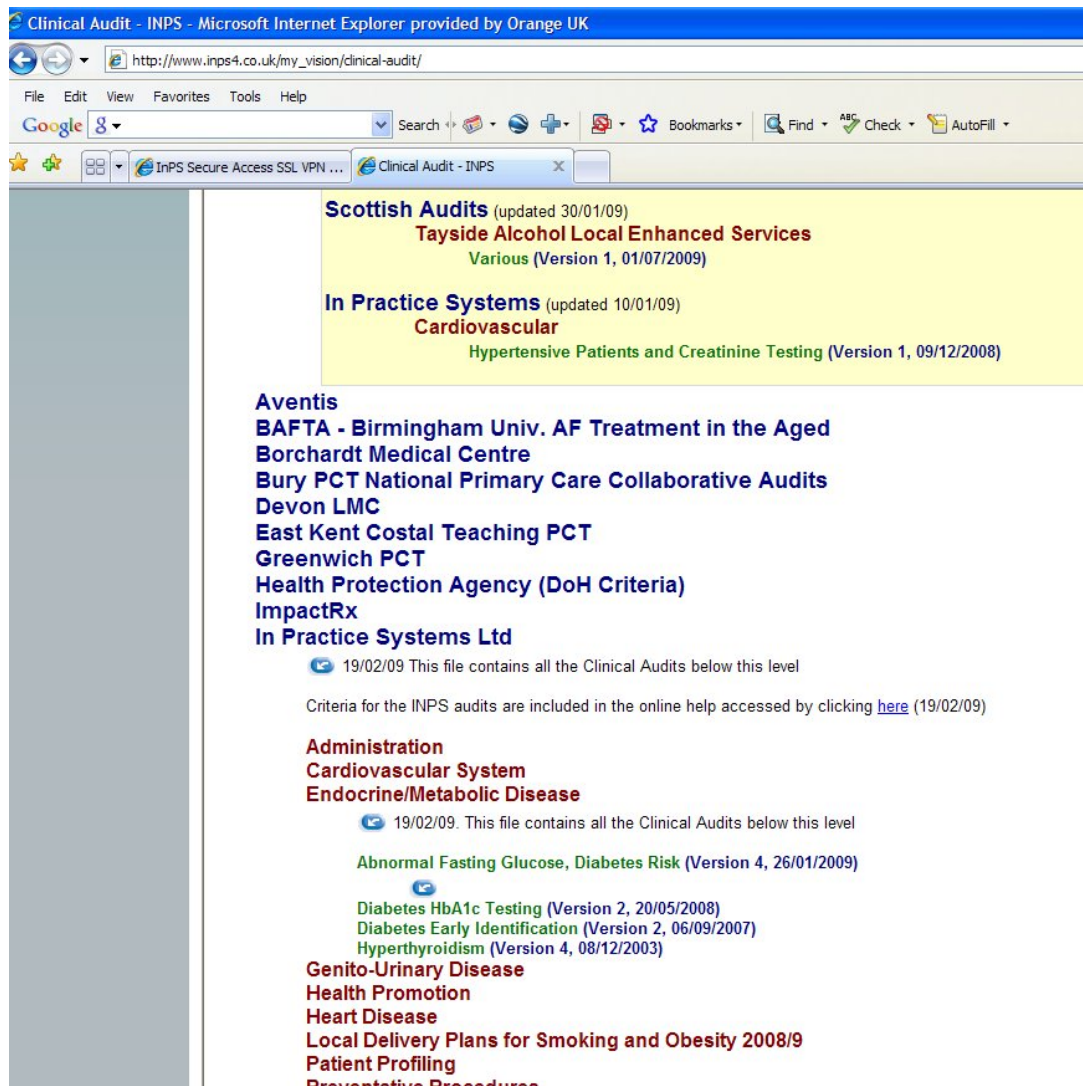
Recently added or amended audits:

- In Practice Systems** (updated 10/01/09)
Endocrine / Metabolic Disease
Abnormal Fasting Glucose, Diabetes Risk (Version 4, 26/01/2009)
- Scottish Audits** (updated 30/01/09)
Tayside Alcohol Local Enhanced Services
Various (Version 1, 01/07/2009)
- In Practice Systems** (updated 10/01/09)
Cardiovascular
Hypertensive Patients and Creatinine Testing (Version 1, 09/12/2008)

Aventis
BAFTA - Birmingham Univ. AF Treatment in the Aged
Borhardt Medical Centre
Bury PCT National Primary Care Collaborative Audits

Downloading an audit from the INPS website

1. Go to the InPS website www.inps.co.uk then to My Vision - Clinical Audit. All the recently added audits are listed under Recently added or amended audits: at the top of the screen. This list is not linked to the audit and is for information only.
2. Scroll down and select the audit you want, eg In Practice Systems - Endocrine/Metabolic Disease - Abnormal Fasting Glucose Diabetes Risk.



The screenshot shows a Microsoft Internet Explorer browser window displaying the INPS website. The address bar shows http://www.inps4.co.uk/my_vision/clinical-audit/. The page content is as follows:

Scottish Audits (updated 30/01/09)
Tayside Alcohol Local Enhanced Services
Various (Version 1, 01/07/2009)

In Practice Systems (updated 10/01/09)
Cardiovascular
Hypertensive Patients and Creatinine Testing (Version 1, 09/12/2008)

Aventis
BAFTA - Birmingham Univ. AF Treatment in the Aged
Borchardt Medical Centre
Bury PCT National Primary Care Collaborative Audits
Devon LMC
East Kent Costal Teaching PCT
Greenwich PCT
Health Protection Agency (DoH Criteria)
ImpactRx
In Practice Systems Ltd

19/02/09 This file contains all the Clinical Audits below this level

Criteria for the INPS audits are included in the online help accessed by clicking [here](#) (19/02/09)





Administration
Cardiovascular System
Endocrine/Metabolic Disease

19/02/09. This file contains all the Clinical Audits below this level

Abnormal Fasting Glucose, Diabetes Risk (Version 4, 26/01/2009)

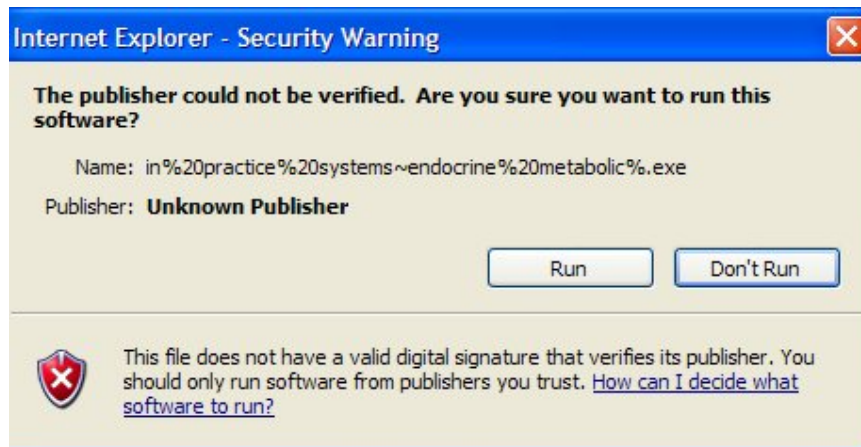
Diabetes HbA1c Testing (Version 2, 20/05/2008)
Diabetes Early Identification (Version 2, 06/09/2007)
Hyperthyroidism (Version 4, 08/12/2003)

Genito-Urinary Disease
Health Promotion
Heart Disease
Local Delivery Plans for Smoking and Obesity 2008/9
Patient Profiling
Preventative Procedures

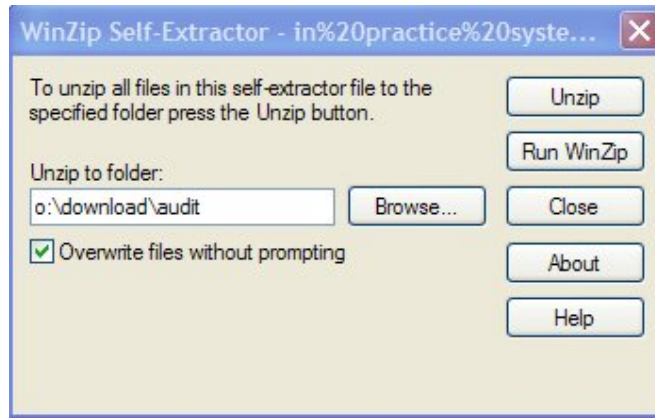
3. The audits can be downloaded in one of three ways:
- either the specific audit you want - click on the green line of the audit you want in order to reveal the download icon  beneath it, for example, a clinical category line such as **Abnormal Fasting Glucose, Diabetes Risk**.
 - or the clinical area you want - click on the  icon which is below the red clinical area heading, for example, **Endocrine/Metabolic Disease**. This will download all the audits listed under Endocrine.
 - or all the audits under a source - click on  which is directly under the blue heading of the Source, for example, **In Practice Systems Ltd**. This will download ALL audits under that Source.
4. Whichever method you choose, click on  and select Open.



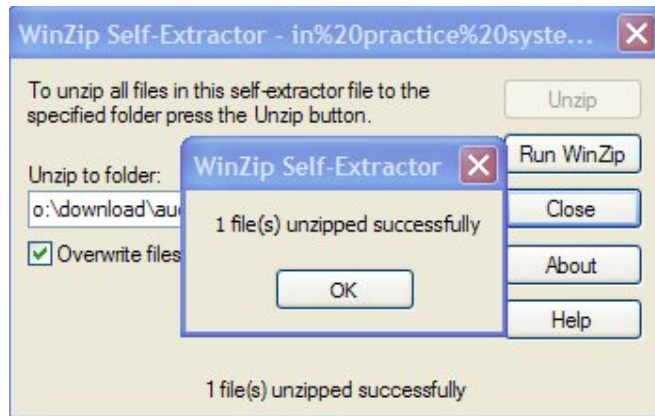
5. Click on Run at the above screen.



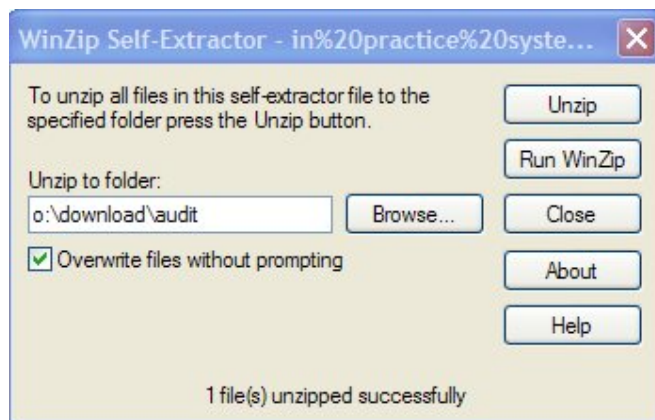
6. Click on Run at the above screen.



7. At the Winzip Self-Extractor screen, click on Unzip. The files are in self-extracting compressed zip format in order to save you downloading time. They are always unzipped to O:\DOWNLOAD\audits.



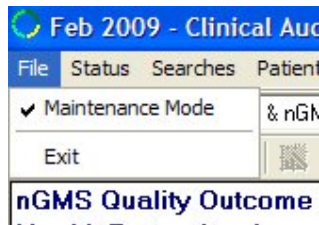
8. Click on OK when you see the message: 1 file(s) unzipped successfully.



9. Finally, click on Close.

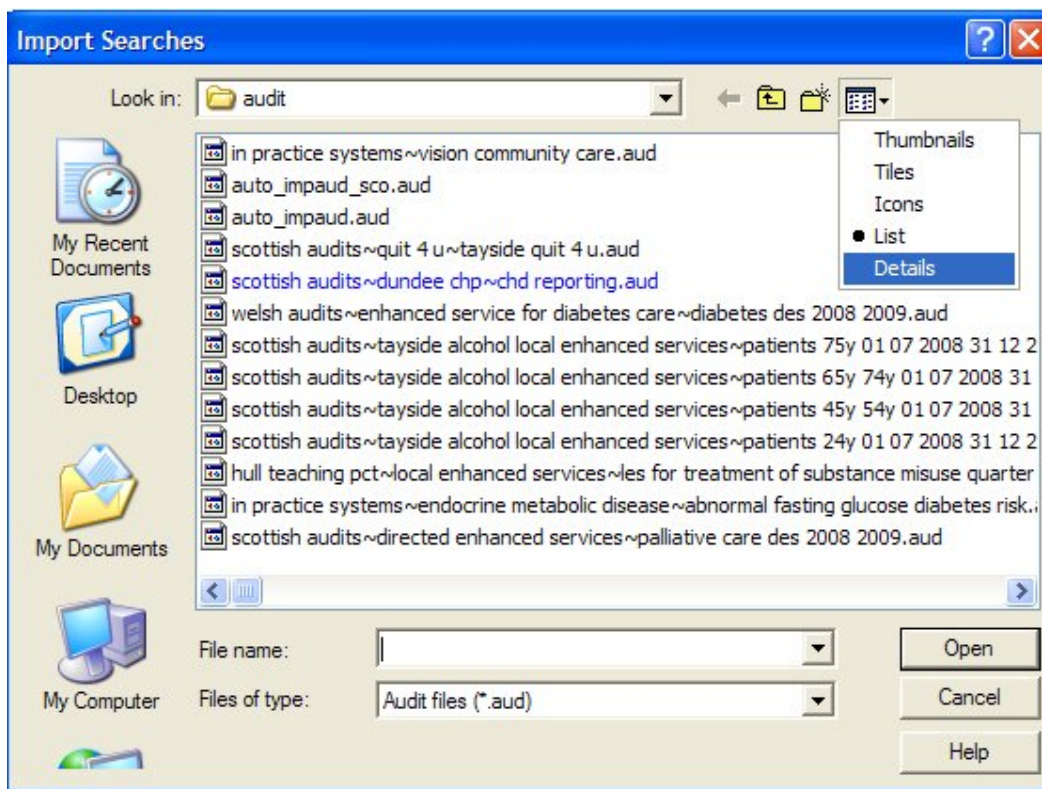
Importing the Audit

10. In Vision - Clinical Audit, select File - Maintenance Mode.

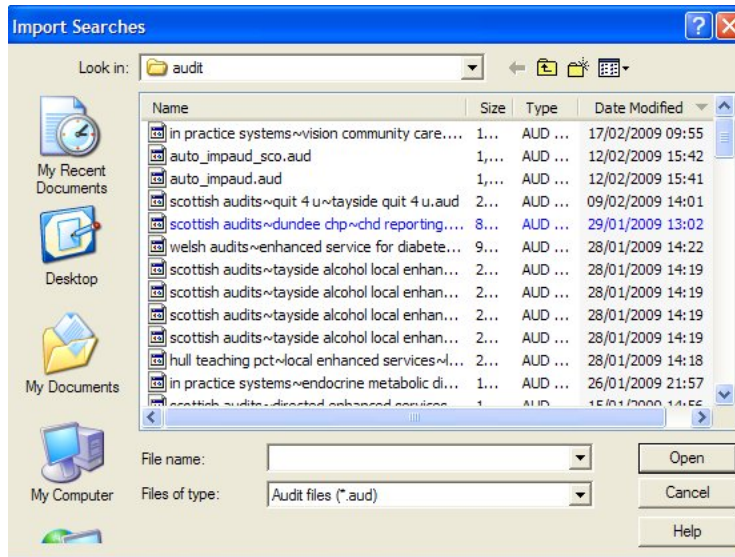


11. Click on Import Searches from the Searches Menu and navigate to O:\DOWNLOAD\audit.

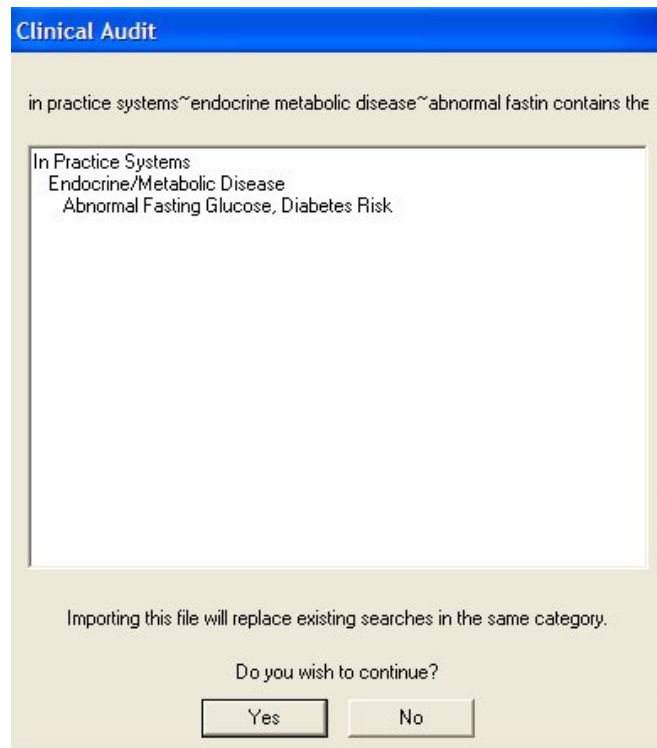
12. At the Import Searches screen, click on , swap to Details.



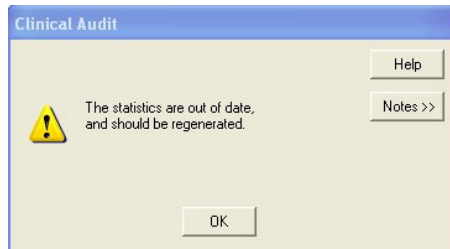
13. Then click on the Date Modified column header (you may need to do this twice) until the most recent date is at the top.



14. Click on the audit you want, for example, in practice systems~endocrine metabolic disease~abnormal fasting glucose diabetes risk.
15. Click on Open and follow the prompts. (Note that if there is more than audit, each audit must be imported separately).





16. The next screen confirms the audit you are importing. Check it is the correct audit, and click on Yes.
17. Click OK when you see the message: The statistics are out of date and should be regenerated.



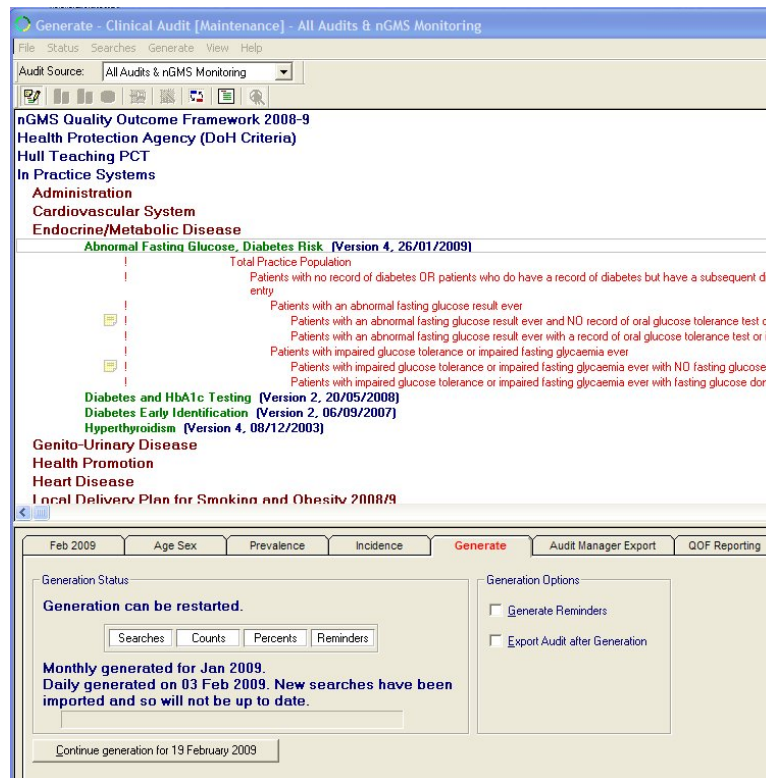
Generate the audit

If there are any inactivate reminders:

18. Point to a line where the reminder icon is pale yellow , and click with the right mouse, selecting Reminder. Check the Active box on the Reminder screen. Click on OK. The icon will now become bold yellow .

Finally, you need to generate the new audit:

19. You will find that once audits have been imported, the Generate tab will again show in red, signifying that you can regenerate the monthly statistics.
20. Click on the Generate tab then on the Generate button (Continue generation for [month/year]). It will only run the newly imported audit, unless it is the end of the month and Generate is already triggered.



Remove or inactivate audit searches

Searches can be removed at audit group level. This deletes all the searches within the clinical category. It is good practice to delete permanently the searches from which you don't want statistics, because they will only lengthen the time of statistic generation each month.


1. First, put Clinical Audit in Maintenance mode, either by clicking on or select File – Maintenance Mode.
2. Select a clinical area line (red) or clinical category line (green) and right mouse click, selecting Delete Searches.

Note that although you cannot delete individual searches, you can inactivate one. Only do this if you feel you might at some future date use them again. If they are on the InPS website, then delete them for the time being, and download them again if you change your mind.

To inactivate a search, in either Normal or Maintenance mode, select the search line, right mouse click, then Inactive (or select Status – Inactive).

Note that inactivating a search does not inactivate its reminder; if the reminder is active, this will still be generated each month on an inactive search.

To display searches made inactive, select Searches – Inactive Searches, or Searches – Options, and mark the Inactive box in Include Searches. Inactive searches are displayed with a red cross.

	0	0.00%	Patients with last Cholesterol = or > 6.2
---	---	-------	---

To reactivate a search, display inactive searches, select the inactive search line, and right mouse click, selecting Inactive to remove the tick.