

Northern Ireland

Audits for DES : Asthma, COPD, BMI

Long Term Condition Monitoring 2010

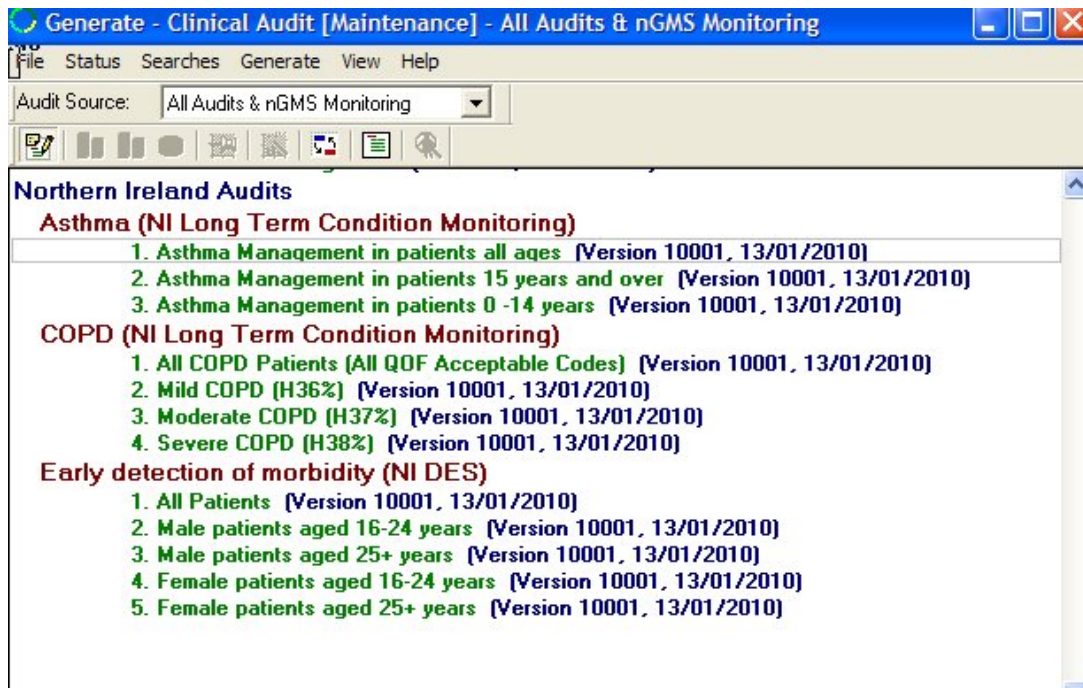
Table of Editions and Contents

Date	Version	Contents	Output
31.10.06	Version 4, 04/10/2007	Audit - COPD (NI Long Term Condition Monitoring) Audit - Asthma Audit BMI >30	
14.11.06	Version 4, 04/10/2007	Comments from GP Unit EHSSB	
04.10.07 16.10.07	Version 3, 04/10/2007	Changes for the 2007-8 collection	pdf
24.10.07	Version 6 23/10/2007	All audits same version no.	pdf
11.12.08	Version	2008-9 Move dates on a year	pdf
20.01.10	v10001, 13/01/2010	Asthma, COPD, Early detection of morbidity - no change to criteria - dates moved on a year	pdf

Copyright © In Practice Systems Ltd 2006

Contents

NORTHERN IRELAND DES AUDITS AND GUIDELINE	1
What this User Guide covers	1
Long Term Condition Management Scheme	2
What's New	2
COPD (NI Long Term Condition Monitoring) audits	3
Asthma NI Long Term Condition Monitoring audits	10
BMI >30 - Early detection of morbidity (NI DES) audits	17
NI DES guideline for Vision 3	21

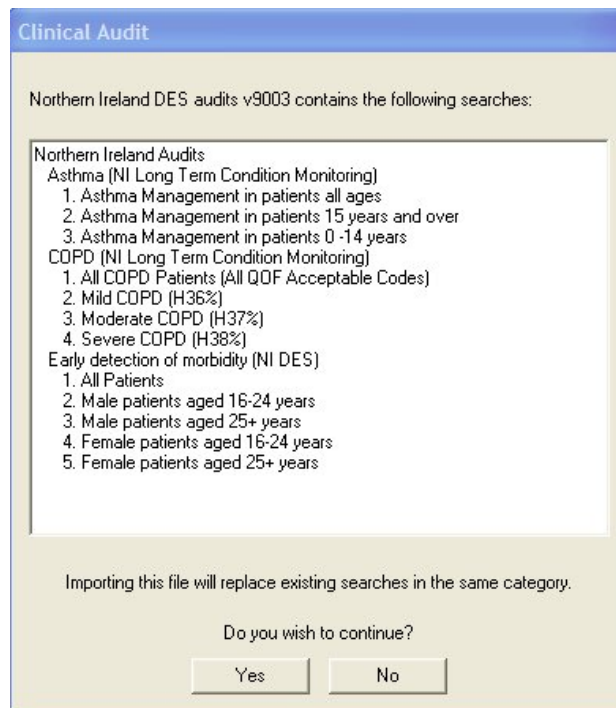


The audits may have different version numbers to those shown above, as minor amendments take place and new versions are issued

Northern Ireland DES audits and guideline

What this User Guide covers

This user guide explains the criteria that relates to the NI DES audits. These audits can be downloaded from the INPS website www.inps.co.uk - My Vision - Downloads - Clinical Audits - NI DES. They can then be unzipped and imported into Vision 3 - Clinical Audit.



Once imported, activate the reminders you want to use, then generate the statistics.

For the criteria and Read codes used for the scheme:

- COPD - see page 3
- Asthma - see page 10
- BMI > 30 - see page 17

Long Term Condition Management Scheme

This DES focuses on three regional health priorities. It builds on the QOF and should contribute to reduced pressure on secondary care and improve the long-term health and well-being of patients.

Patients with Chronic Obstructive Pulmonary Disease (COPD)

- Specialist smoking cessation
- Effective self-management training and action plans
- Referral to community services e.g. pulmonary rehabilitation.

Patients with Asthma

- Specialist smoking cessation
- Effective self-management training and action plans
- Urgent care and high risk patients.

The early detection and follow up of patients with a Body Mass Index (BMI) greater than 30 who are likely to develop morbidity such as diabetes mellitus

- Specialist smoking cessation
- Identification and follow-up of patients with increased risks of morbidity
- Provision of a resource kit to motivated patients.

What's New

In version 10001, 13/01/2010, the criteria remains unchanged from the previous version, but dates have moved on a year.

COPD (NI Long Term Condition Monitoring) audits

Version 10001, 13/01/2010

The COPD audits look for patients with or without:

- Specialist smoking cessation
- Effective self-management training and action plans
- Referral to community services e.g. pulmonary rehabilitation.

They are divided:

- All COPD patients
- Patients with Mild COPD (H36%)
- Patients with Moderate COPD (H37%)
- Patients with Severe COPD (H38%)

The criteria is almost the same for each set of audits. For the purpose of this help file, each line relates to the different degrees of COPD severity as listed above.

Total Practice population

All active, registered patients

Total number of smokers (QOF smoking codes) within the practice

All active, registered patients who have a record as a smoker with one of the following Read codes:

- 1372. Trivial smoker - <1 cig/day
- 1373. Light smoker - 1-9 cigs/day
- 1374. Moderate smoker - 10-19 cigs/day
- 1375. Heavy smoker - 20-39 cigs/day
- 1376. Very heavy smoker - 40+ cigs/day
- 137C. Keeps trying to stop smoking
- 137D. Admitted tobacco cons untrue?
- 137G. Trying to give up smoking
- 137H. Pipe smoker
- 137J Cigar smoker
- 137M Rolls own cigarettes
- 137P. Cigarette smoker
- 137Q. Smoking started
- 137R. Current smoker
- 137V Smoking reduced
- 137X. Cigarette consumption

- 137Y. Cigar consumption
- 137Z. Tobacco consumption NOS
- 137a. Pipe tobacco consumption
- 137b. Ready to stop smoking
- 137c. Thinking about stopping smoking
- 137d. Not interested in stopping smoking
- 137e. Smoking restarted
- 137f. Reason for restarting smoking
- 137h Minutes from waking to first tobacco consumption

All patients with COPD (All QOF acceptable read codes)

All patients with COPD:

- H3 Chronic obstructive pulmonary disease (with NO hierarchical codes)
- H31% Chronic bronchitis etc (excluding H3101 Smoker's cough, and H31y0 Chronic tracheitis, H3122 Acute exacerbation of chronic obstructive airways disease)
- H32% Emphysema, etc
- H36-H3z Mild chronic obstructive pulmonary disease, etc

COPD in detail:

- H3. Chronic obstructive pulmonary disease
 - H3...11 Chronic obstructive airways disease
- H31. Chronic bronchitis
 - H310. Simple chronic bronchitis
 - H3100 Chronic catarrhal bronchitis
 - H310z Simple chronic bronchitis NOS
 - H311. Mucopurulent chronic bronchitis
 - H3110 Purulent chronic bronchitis
 - H3111 Fetid chronic bronchitis
 - H311z Mucopurulent chronic bronchitis NOS
 - H312. Obstructive chronic bronchitis
 - H3120 Chronic asthmatic bronchitis
 - H3120.11 Chronic wheezy bronchitis
 - H3121 Emphysematous bronchitis
 - H312z Obstructive chronic bronchitis NOS
 - H313. Mixed simple and mucopurulent chronic bronchitis
 - H31y. Other chronic bronchitis
 - H31y1 Chronic tracheobronchitis
 - H31yz Other chronic bronchitis NOS
 - H31z. Chronic bronchitis NOS

- H32. Emphysema
 - H320. Chronic bullous emphysema
 - H3200 Segmental bullous emphysema
 - H3201 Zonal bullous emphysema
 - H3202 Giant bullous emphysema
 - H3203 Bullous emphysema with collapse
 - H3203.11 Tension pneumatocele
 - H320z Chronic bullous emphysema NOS
 - H321. Panlobular emphysema
 - H322. Centrilobular emphysema
 - H32y. Other emphysema
 - H32y0 Acute vesicular emphysema
 - H32y1 Atrophic (senile) emphysema
 - H32y1.11 Acute interstitial emphysema
 - H32y2 MacLeod's unilateral emphysema
 - H32yz Other emphysema NOS
 - H32yz11 Sawyer - Jones syndrome
 - H32z. Emphysema NOS
 - H36. Mild chronic obstructive pulmonary disease
 - H37. Moderate chronic obstructive pulmonary disease
 - H38. Severe chronic obstructive pulmonary disease
 - H3y. Other specified chronic obstructive airways disease
 - H3y..11 Other specified chronic obstructive pulmonary disease
 - H3y0 Chronic obstruct pulmonary dis with acute lower resp infectn
 - H3y1 Chron obstruct pulmonary dis wth acute exacerbation, unspec
 - H3z. Chronic obstructive airways disease NOS
 - H3z..11 Chronic obstructive pulmonary disease NOS
- NB - Excluded: H3122 Acute exacerbation of chronic obstructive airways disease

All patients with COPD WITH a specific severity code

All patients with COPD:

Who as one of the recorded codes have a specific severity code of one of the following:

- H36.. Mild COPD
- H37.. Moderate COPD
- H38.. Severe COPD

All patients with COPD WITHOUT a specific severity code

All patients with COPD:

Who do NOT have a specific severity code of one of the following:

H36.. Mild COPD

H37.. Moderate COPD

H38.. Severe COPD

All patients with COPD provided with self management training since 01/04/2009

All patients with COPD:

With a record of self management training since 01/04/2009:

66YI COPD management plan given

All patients with COPD NOT provided with self management training since 01/04/2009

All patients with COPD:

NOT provided with self management training since 01/04/2009:

66YI COPD management plan given



Reminder: NI DES COPD patient not given management training

All patients with COPD on optimal pharmacological treatment since 01/04/2009

All patients with COPD:

On optimal pharmacological treatment since 01/04/2009:

8BID. Optimisation of drug dosage

All patients with COPD NOT on optimal pharmacological treatment since 01/04/2009

All patients with COPD:

With NO record of being on optimal pharmacological treatment since 01/04/2009:

8BID. Optimisation of drug dosage



Reminder: NI DES COPD patient not on optimal therapy

All patients with COPD who are recorded as smokers since 01/04/2009

All patients with COPD:

Who are recorded as smokers since 01/04/2009:

137R. Current smoker

All patients with COPD who are recorded as non-smokers or ex-smokers since 01/04/2009

All patients with COPD:

Who are recorded as non-smokers since 01/04/2009:

1371. Never smoked tobacco

Or ex-smokers:

137S. Ex smoker

All patients with COPD who have NO smoking status recorded since 01/04/2009

All patients with COPD:

With no smoking status recorded since 01/04/2009:

1371 Never smoked tobacco

137S Ex smoker

137R Current smoker



Reminder: NI DES COPD patient with no DES smoking status code

All patients with COPD who are recorded as smokers who have been offered smoking cessation advice since 01/04/2009

All patients with COPD:

Who are recorded as smokers since 01/04/2009:

137R. Current smoker

Who have been offered smoking cessation advice since 01/04/2009:

8H7i Referral to smoking cessation advisor

All patients with COPD who are recorded as smokers who have NOT been offered smoking cessation advice since 01/04/2009

All patients with COPD:

Who are recorded as smokers since 01/04/2009:

137R. Current smoker

Who have NOT been offered smoking cessation advice since 01/04/2009:

8H7i Referral to smoking cessation advisor



Reminder: NI DES COPD patient not offered smoking cessation advice

All patients with moderate or severe COPD assessed and referred for Long Term Oxygen Therapy since 01/04/2009

All patients with moderate or severe COPD:

H37.. Moderate COPD

H38.. Severe COPD

(Note - this excludes H36.. Mild COPD

Assessed and referred for Long Term Oxygen Therapy since 01/04/2009:

8HHx Referral for assessment of need for oxygen therapy

All patients with moderate or severe COPD NOT assessed and referred for Long Term Oxygen Therapy since 01/04/2009

All patients with moderate or severe COPD:

H37.. Moderate COPD

H38.. Severe COPD

NOT Assessed and referred for Long Term Oxygen Therapy since 01/04/2009:

8HHx Referral for assessment of need for oxygen therapy



Reminder: NI DES COPD patient not assessed for long term oxygen

All patients with COPD referred for pulmonary rehabilitation since 01/04/2009

All patients with COPD:

Referred for pulmonary rehabilitation since 01/04/2009:

8H7u Referral to pulmonary rehabilitation

All patients with COPD NOT referred for pulmonary rehabilitation since 01/04/2009

All patients with COPD:

NOT referred for pulmonary rehabilitation since 01/04/2009:

8H7u Referral to pulmonary rehabilitation



Reminder: NI DES COPD patient not referred for pulmonary rehabilitation

All patients with COPD using home nebuliser since 01/04/2009

All patients with COPD:

Using home nebuliser since 01/04/2009: 6638 Home nebuliser

All patients with COPD without a record of using home nebuliser since 01/04/2009

All patients with COPD:

With NO record of using home nebuliser since 01/04/2009:

6638 Home nebuliser



Reminder: NI DES COPD patient with no record of home nebuliser

All patients with COPD with 3+ emergency admissions to hospital because of COPD (8H2R.) since 01/04/2009

All patients with COPD:

Who have more than 3 emergency admissions to hospital because of COPD since 01/04/2009:

8H2R. Admit COPD emergency

All patients with COPD with 1-3 emergency admissions to hospital because of COPD (8H2R.) since 01/04/2009

All patients with COPD:

Who have 1-3 emergency admissions to hospital because of COPD since 01/04/2009:

All patients with COPD with 3+ A&E attendances because of COPD (66Yd.) since 01/04/2009

All patients with COPD:

Who have more than 3 A&E attendances because of COPD since 01/04/2009:

66Yd. COPD accident & emergency attendance since last visit

All patients with COPD with 1-3 A&E attendances because of COPD (66Yd.) since 01/04/2009

All patients with COPD:

Who have 1-3 A&E attendances because of COPD since 01/04/2009:

66Yd. COPD accident & emergency attendance since last visit

Asthma NI Long Term Condition Monitoring audits

Version 10001, 13/01/2010

These audits are divided into three sections by age:

- Asthma Management in patients 0 - 14 years
- Asthma Management in patients 15 years and over
- Asthma management in patients all ages

The criteria is the same for each set of audits. For the purpose of this help file, each line implies the three age groups as listed above.

Total Practice Population

All active registered patients

All patients with diagnosis of Asthma (H33%)

All patients in the following age groups:

- in patients 0 - 14 years
- in patients 15 years and over
- in patients all ages

With one of the following Read codes for Asthma:

H33% Asthma

Excluding those patients whose LAST Asthma Register entry shows "Removed From Register"

Excluding those with a latest record, since asthma diagnosis date, of:

21262 Asthma resolved

212G Asthma resolved

All patients with Asthma (H33%) with asthma medication in last 12 months (QOF codes)

All patients in the relevant age groups with a diagnosis of Asthma (excluding those removed from register, or Asthma resolved)

With asthma medication in the last 12 months with one of the following drug Read codes:

c1%, c2%, c3%, c4%, c5%, c6%, c7%, cA%

Patients with Asthma (H33%) with NO asthma medication in last 12 months (QOF codes)

All patients in the relevant age groups with a diagnosis of Asthma (excluding those removed from register, or Asthma resolved)

With NO record of asthma medication in the last 12 months with one of the following drug Read codes:

c1%, c2%, c3%, c4%, c5%, c6%, c7%, cA%

Patients with Asthma provided with self management training since 01/04/2009

All patients in the relevant age groups with a diagnosis of Asthma (excluding those removed from register, or Asthma resolved)

With asthma medication in the last 12 months with one of the following drug Read codes:

c1%, c2%, c3%, c4%, c5%, c6%, c7%, cA%

And with a record of self management training:

663U Asthma management plan given

Patients with Asthma NOT provided with self management training since 01/04/2009

All patients in the relevant age groups with a diagnosis of Asthma (excluding those removed from register, or Asthma resolved)

With asthma medication in the last 12 months with one of the following drug Read codes:

c1%, c2%, c3%, c4%, c5%, c6%, c7%, cA%

And with NO record of self management training:

663U Asthma management plan given



Reminder: NI DES Asthma patient [age range]not given management training

Patients with Asthma on optimal pharmacological treatment since 01/04/2009

All patients in the relevant age groups with a diagnosis of Asthma (excluding those removed from register, or Asthma resolved)

With asthma medication in the last 12 months with one of the following drug Read codes:

c1%, c2%, c3%, c4%, c5%, c6%, c7%, cA%

And with a record of optimal pharmacological treatment since 01/04/2009

8BID Optimisation of drug dosage

Patients with Asthma NOT on optimal pharmacological treatment since 01/04/2009

All patients in the relevant age groups with a diagnosis of Asthma (excluding those removed from register, or Asthma resolved)

With asthma medication in the last 12 months with one of the following drug Read codes:

c1%, c2%, c3%, c4%, c5%, c6%, c7%, cA%

And with NO record of optimal pharmacological treatment since 01/04/2009

8BID Optimisation of drug dosage



Reminder: NI DES Asthma patient [age range] not on optimal therapy

Patients with Asthma who are recorded as smokers since 01/04/2009

All patients in the relevant age groups with a diagnosis of Asthma (excluding those removed from register, or Asthma resolved)

With asthma medication in the last 12 months with one of the following drug Read codes:

c1%, c2%, c3%, c4%, c5%, c6%, c7%, cA%

Who are recorded as smokers since 01/04/2009:

137R Current smoker

Patients with Asthma who are recorded as non-smokers or ex-smokers since 01/04/2009

All patients in the relevant age groups with a diagnosis of Asthma (excluding those removed from register, or Asthma resolved)

With asthma medication in the last 12 months with one of the following drug Read codes:

c1%, c2%, c3%, c4%, c5%, c6%, c7%, cA%

Who are recorded since 01/04/2009 as non-smokers:

1371 Never smoked tobacco

Or ex-smokers:

137S Ex smoker

Patients with Asthma who have NO smoking status recorded since 01/04/2009

All patients in the relevant age groups with a diagnosis of Asthma (excluding those removed from register, or Asthma resolved)

With asthma medication in the last 12 months with one of the following drug Read codes:


c1%, c2%, c3%, c4%, c5%, c6%, c7%, cA%

With no smoking status recorded since 01/04/2009:

1371 Never smoked tobacco

137S Ex smoker

137R Current smoker

 Reminder: NI DES Asthma patient [age range] with no DES smoking status code

Patients with Asthma who are recorded as smokers who have been offered smoking cessation advice since 01/04/2009

All patients in the relevant age groups with a diagnosis of Asthma (excluding those removed from register, or Asthma resolved)

With asthma medication in the last 12 months with one of the following drug Read codes:

c1%, c2%, c3%, c4%, c5%, c6%, c7%, cA%

Who are recorded as smokers since 01/04/2009:

137R Current smoker

Who have been offered smoking cessation advice since 01/04/2009:

8H7i Referral to smoking cessation advisor

Patients with Asthma who are recorded as smokers who have NOT been offered smoking cessation advice since 01/04/2009

All patients in the relevant age groups with a diagnosis of Asthma (excluding those removed from register, or Asthma resolved)

With asthma medication in the last 12 months with one of the following drug Read codes:

c1%, c2%, c3%, c4%, c5%, c6%, c7%, cA%

Who are recorded as smokers since 01/04/2009:

137R Current smoker

Who have NOT been offered smoking cessation advice since 01/04/2009:

8H7i Referral to smoking cessation advisor

 Reminder: NI DES Asthma patient [age range] not offered smoking cessation advice

Patients with Asthma recorded as at risk of fatal Asthma (H334) since 01/04/2009

All patients in the relevant age groups with a diagnosis of Asthma (excluding those removed from register, or Asthma resolved)

With asthma medication in the last 12 months with one of the following drug Read codes:

c1%, c2%, c3%, c4%, c5%, c6%, c7%, cA%

With an at risk of fatal asthma record ever:

H334 Brittle asthma

Patients with Asthma NOT recorded as at risk of fatal Asthma (H334) since 01/04/2009

All patients in the relevant age groups with a diagnosis of Asthma (excluding those removed from register, or Asthma resolved)

With asthma medication in the last 12 months with one of the following drug Read codes:

c1%, c2%, c3%, c4%, c5%, c6%, c7%, cA%

With NO record of at risk of fatal asthma ever:

H334 Brittle asthma



Reminder: Asthma patient [age range] without code for Brittle Asthma

Patients with Asthma recorded as using inhalers since 01/04/2009

All patients in the relevant age groups with a diagnosis of Asthma (excluding those removed from register, or Asthma resolved)

With asthma medication in the last 12 months with one of the following drug Read codes:

c1%, c2%, c3%, c4%, c5%, c6%, c7%, cA%

With a record of using inhalers since 01/04/2009 with one or more of the following drug Read codes:

c13e, c13z, c14j, c14t, c19, c1C, c1D, c1E

c318, c31Bz, c31G, c31W, c332j, c33z, c68, c69

c648, c64j, c64c, c64y

c51C, c51F, c61, c67x, c67y, c67z, c71, c74

c65, c66

Patients with Asthma NOT recorded as using inhalers since 01/04/2009

All patients in the relevant age groups with a diagnosis of Asthma (excluding those removed from register, or Asthma resolved)

With asthma medication in the last 12 months with one of the following drug Read codes:

c1%, c2%, c3%, c4%, c5%, c6%, c7%, cA%

With NO record of using inhalers since 01/04/2009



Reminder: NI DES Asthma patient [age range] not recorded as using inhalers

Patients with Asthma recorded as using inhalers since 01/04/2009 with inhaler technique recorded

All patients in the relevant age groups with a diagnosis of Asthma (excluding those removed from register, or Asthma resolved)

With asthma medication in the last 12 months with one of the following drug Read codes:

c1%, c2%, c3%, c4%, c5%, c6%, c7%, cA%

With a record of using inhalers since 01/04/2009 with one or more of the following drug Read codes:

c13e, c13z, c14j, c14t, c19, c1C, c1D, c1E, c318, c31Bz, c31G, c31W, c332j, c33z, c68, c69, c648, c64j, c64c, c64y, c51C, c51F, c61, c67x, c67y, c67z, c71, c74, c65, c66

And with a record of inhaler technique in the last 12 months with one of the following:

663H. Inhaler technique - good

66Y4. Inhaler technique - moderate

663I. Inhaler technique - poor

Patients with Asthma recorded as using inhalers with good technique (663H.) since 01/04/2009

All patients in the relevant age groups with a diagnosis of Asthma (excluding those removed from register, or Asthma resolved)

With asthma medication in the last 12 months with one of the following drug Read codes:

c1%, c2%, c3%, c4%, c5%, c6%, c7%, cA%

With a record of using inhalers since 01/04/2009

And with a record of good inhaler technique:

663H. Inhaler technique - good

Patients with Asthma recorded as using inhalers with moderate technique (66Y4.) since 01/04/2009

All patients in the relevant age groups with a diagnosis of Asthma (excluding those removed from register, or Asthma resolved)

With asthma medication in the last 12 months with one of the following drug Read codes:

c1%, c2%, c3%, c4%, c5%, c6%, c7%, cA%

With a record of using inhalers since 01/04/2009

And with a record of moderate inhaler technique:

66Y4. Inhaler technique - moderate

Patients with Asthma recorded as using inhalers with poor technique (663I.) since 01/04/2009

All patients in the relevant age groups with a diagnosis of Asthma (excluding those removed from register, or Asthma resolved)

With asthma medication in the last 12 months with one of the following drug Read codes:

c1%, c2%, c3%, c4%, c5%, c6%, c7%, cA%

With a record of using inhalers since 01/04/2009

And with a record of poor inhaler technique:

663I. Inhaler technique - poor

Patients with Asthma recorded as using inhalers since 01/04/2009 with NO inhaler technique recorded

All patients in the relevant age groups with a diagnosis of Asthma (excluding those removed from register, or Asthma resolved)

With asthma medication in the last 12 months with one of the following drug Read codes:

c1%, c2%, c3%, c4%, c5%, c6%, c7%, cA%

With a record of using inhalers since 01/04/2009

And with NO record of inhaler technique in the last 12 months



Reminder: NI DES Asthma patient [age range] with no record inhaler technique

Patients with Asthma with emergency admissions to hospital because of Asthma (8H2P.) since 01/04/2009

All patients in the relevant age groups with a diagnosis of Asthma (excluding those removed from register, or Asthma resolved)

With asthma medication in the last 12 months with one of the following drug Read codes:

c1%, c2%, c3%, c4%, c5%, c6%, c7%, cA%

With emergency admission to hospital because of Asthma since 01/04/2009:

8H2P Emergency admission, asthma

Patients with Asthma with A&E attendances because of Asthma (663m.) since 01/04/2009

All patients in the relevant age groups with a diagnosis of Asthma (excluding those removed from register, or Asthma resolved)

With asthma medication in the last 12 months with one of the following:

c1%, c2%, c3%, c4%, c5%, c6%, c7%, cA%

With A&E attendance because of Asthma since 01/04/2009:

663m. Asthma accident & emergency attendance since last visit

BMI >30 - Early detection of morbidity (NI DES) audits

Version 10003, 13/01/2010

These audits are split into five categories of age and sex:

- All patients
- Female patients aged 16-24 years
- Female patients aged 25+ years
- Male patients aged 16-24 years
- Male patients aged 25+ years

The criteria is the same for each set of audits. For the purpose of this help file, each line implies the different age and sex ranges as listed above.

Total Practice Population

All active, registered patients.

Total Number of smokers (137R) recorded since 01/04/2009 within the practice

All active, registered patients who have a record since 01/04/2009 as a smoker:

137R. Current smoker

All patients with BMI 30 and above recorded since 01/01/2009

Patients with a BMI recorded as 30 and above in the Weight SDA

And with one of the following Read codes:

22K5. Body mass index 30+ - obesity

22K7. Body mass index 40+ = severely obese

All patients with BMI between 30 and 39.9 recorded since 01/01/2009

Patients with a BMI recorded between 30 and 39.9 in the Weight SDA

And with one of the following Read codes:

22K5. Body mass index 30+ - obesity

All patients with BMI 40 and above recorded since 01/01/2009

Patients with a BMI recorded of 40 and over in the Weight SDA

And with one of the following Read codes:

22K7. Body mass index 40+ = severely obese

All patients with NO BMI recorded since 01/01/2009

Patients with NO BMI recorded in the Weight SDA

Nor with one of the following Read codes:

22K% Body Mass Index



Reminder: NI DES: This patient has no BMI recorded since 01/01/2009

All patients with BMI 30 and above recorded as smokers since 01/04/2009

Patients with a BMI recorded as 30 and above in the Weight SDA

And with one of the following Read codes:

22K5. Body mass index 30+ - obesity

22K7. Body mass index 40+ = severely obese

Who have a record since 01/04/2009 as a smoker:

137R. Current smoker

All patients with BMI 30 and above recorded as non-smokers or ex-smokers since 01/04/2009

Patients with a BMI recorded as 30 and above in the Weight SDA

And with one of the following Read codes:

22K5. Body mass index 30+ - obesity

22K7. Body mass index 40+ = severely obese

Who are recorded as non-smokers since 01/04/2009:

1371. Never smoked tobacco

Or ex-smokers:

137S. Ex smoker

All patients with BMI 30 and above with no smoking status recorded since 01/04/2009

Patients with a BMI recorded as 30 and above in the Weight SDA

And with one of the following Read codes:

22K5. Body mass index 30+ - obesity

22K7. Body mass index 40+ = severely obese

With no smoking status recorded since 01/04/2009:

1371 Never smoked tobacco

137S Ex smoker

137R Current smoker



Reminder: NI DES: Pt with BMI >30 No smoking status since 01/04/2009

All patients with BMI 30 and above recorded as smokers since 01/04/2009 referred for smoking cessation advice

Patients with a BMI recorded as 30 and above in the Weight SDA

And with one of the following Read codes:

22K5. Body mass index 30+ - obesity

22K7. Body mass index 40+ = severely obese

Who have a record since 01/04/2009 as a smoker:

137R. Current smoker

Who have been referred for smoking cessation advice:

8H71 Referral to smoking cessation advisor

All patients with BMI 30 and above recorded as smokers since 01/04/2009 NOT referred for smoking cessation advice

Patients with a BMI recorded as 30 and above in the Weight SDA

And with one of the following Read codes:

22K5. Body mass index 30+ - obesity

22K7. Body mass index 40+ = severely obese

Who have a record since 01/04/2009 as a smoker:

137R. Current smoker

Who have NOT been referred for smoking cessation advice:

8H71 Referral to smoking cessation advisor



Reminder: NI DES: Pat with BMI >30 recorded as a smoker BUT no cessation advice

All patients with BMI 30 and above with a new diagnosis of Diabetes recorded since 01/01/2009

Patients with a BMI recorded as 30 and above in the Weight SDA

And with one of the following Read codes:

22K5. Body mass index 30+ - obesity

22K7. Body mass index 40+ = severely obese

With a new diagnosis of diabetes recorded since 01/01/2009:

C10E.% Type 1 diabetes mellitus

C10F.% Type 2 diabetes mellitus

All patients with BMI 30 and above with abnormal/high lipids or cholesterol >5mmol/l recorded since 01/01/2009

Patients with a BMI recorded as 30 and above in the Weight SDA

And with one of the following Read codes:

22K5. Body mass index 30+ - obesity

22K7. Body mass index 40+ = severely obese

With a record of abnormal or high lipids recorded since 01/01/2009:

44P3. Serum cholesterol raised

Or a record of cholesterol >5 mmol/l recorded since 01/04/2009 with either the following Read code:

44P3 Serum cholesterol raised

Or

44P Serum cholesterol, and >5 mmol/l

44P1 Serum cholesterol normal, and >5 mmol/l

44P2 Serum cholesterol borderline, and >5 mmol/l

44P4 Serum cholesterol very high, >5 mmol/l

Or

44PH. Total cholesterol measurement, and >5 mmol/l

44PJ. Serum total cholesterol level, and >5 mmol/l

44OE. Plasma total cholesterol level, and >5 mmol/l

All patients with BMI 30 and above with impaired glucose tolerance recorded since 01/01/2009

Patients with a BMI recorded as 30 and above in the Weight SDA

And with one of the following Read codes:

22K5. Body mass index 30+ - obesity

22K7. Body mass index 40+ = severely obese

With a record of impaired glucose tolerance recorded since 01/01/2009:

C11y2 Impaired glucose tolerance

All patients with BMI 30 and above with new diagnosis of hypertension recorded since 01/01/2009

Patients with a BMI recorded as 30 and above in the Weight SDA

And with one of the following Read codes:

22K5. Body mass index 30+ - obesity

22K7. Body mass index 40+ = severely obese

With a record of new diagnosis of hypertension recorded since 01/01/2009:

G2... Hypertension disease

All patients with BMI 30 and above with new diagnosis of hypothyroidism recorded since 01/01/2009

Patients with a BMI recorded as 30 and above in the Weight SDA

And with one of the following Read codes:

22K5. Body mass index 30+ - obesity

22K7. Body mass index 40+ = severely obese

With a record of new diagnosis of hypothyroidism recorded since 01/01/2009:

C04..13 Hypothyroidism

NI DES guideline for Vision 3

The NI DES guideline has been distributed separately. This will help you enter the correct data with valid Read codes.

If you have any queries regarding this guideline, please contact:

GP Unit

EHSSB

Champion House

Belfast

Tel: 028 9055 3941

Fax: 028 9055 3682