

Pocket Vision

v1.2 - Technical Guide

Vision Enterprise Users (VES)

INPS

Table of Editions and Contents

Date	Version	Contents	Output
26/02/07	v1.2	Technical guide - VES	pdf
30/05/07			

Copyright © INPS 2007

Contents

POCKET VISION TECHNICAL GUIDE FOR VES USERS	1
About this User Guide	1
Technical Requirements	1
Workstation Requirements	1
PDA Device	1
Laptop Requirements	2
Installation	2
Introduction to POCKET VISION	3
Pocket Vision Server	3
Vision Business Continuity (VBC)	4
Normal daily routine for Pocket Vision users - Sinch	5
Check that the build process has run correctly	7
Running a manual Pocket Vision database build	9

Pocket Vision Technical Guide for VES users

About this User Guide

This guide is for those who administrate the IT systems at practices or users who would like more detailed information on Pocket Vision and how it works.

Technical Requirements

Workstation Requirements

For Pocket Vision, if your chosen PDA device connects to the workstation using USB, then the operating system on this workstation must be Windows XP. NT workstations do not support USB connectivity. If you wish to connect to an NT workstation, then you must use a serial connection.

PDA Device

The following table shows the required specification and also a list of recommendations for a pocket PC:

	Required	Recommended
Screen size (W x H)	240 x 320	480 x 640
RAM	32 MB	64MB
ROM	64 MB	128MB
Expansion slots	SDIO	CF and SDIO
Processor speed	200 MHz	600 MHz
Operating System	Windows Mobile 2003	Windows Mobile 5.0

Note that if your list size is over 10,000 patients, it is recommended that the PDA has 128Mb of RAM. The PDA devices are not supplied or supported by INPS. However, we are able to provide information about suitable devices.

Laptop Requirements

Pocket Vision Laptop Edition is only supported on laptops with Windows XP as the operating system. The laptop must be capable of accessing the practice network in the same way as a standard Vision workstation. Therefore the specification of the laptop needs to be equivalent to a standard Vision desktop machine.

The minimum specification for XP platform is:

- P3 450GHz or Celeron 600
- 256Mb RAM
- 4 GB HD
- 100Mbps NIC
- graphics card capable of supporting 600*800

Where the practice wish to re-use existing laptops that do not have the correct operating system, they can be re-built as long as they meet the minimum spec for XP as outlined above.

Installation

The Pocket vision software is a user install product and does not require you to purchase engineering time. However, should you wish an InPS engineer to install Pocket Vision, please request a quote via your account manager.

Pocket Vision Laptop Edition on laptops and workstations will be delivered through on-site engineering. The amount of engineering time required will depend on the number of the laptops to be configured and the also if the practice already have Pocket Vision installed.

Introduction to POCKET VISION

Vision Enterprise systems (formerly Vision Bureau) provide full Vision functionality across a wide area network, with all data processed on a central server, for example, at the PCT. Pocket Vision Enterprise (PVE) is the application for Enterprise systems.

Pocket Vision Server

At the practice, one workstation will be designated as the Pocket Vision Server (PV Server). This is defined as the workstation that will act as the gateway to and from the practice to the remote Vision dataset on the Enterprise server. It performs the following tasks:

- Collects the Vision extracts for the practice from the Enterprise system using an FTP process.
- Builds the Pocket Vision databases to include the latest Vision data from the extracts.
- Makes the new Pocket Vision database available for Pocket Vision devices (PDA's, laptops, etc.).
- Allows practice users to monitor the status of PV database builds.
- Acts as the PV licence server.
- Stores the latest version of the PV application to be loaded by new Pocket Vision devices.

It is recommended that the PV Server should be left on overnight so that it can perform the daily Pocket Vision build in time for when the surgery opens. The computer does not need to be logged in since the scheduled task is supplied with a user account. Should the PV Server not be left on, it may be some time before the new Pocket Vision database is available for the Pocket Vision application, particularly if there are a number of daily extracts waiting on the Enterprise server.

Scheduling the daily build

On installation day, the engineer will schedule the time for the automatic daily Pocket Vision Database Build which picks up the day's incremental file from the Enterprise Server. This is likely to be in the early hours, for example, 5 am.

Initial full extract

On the installation day, the engineer will take a full extract of the practice's Vision data from the Enterprise server and download it to the Pocket Vision Server at the practice. Once the Pocket Vision database has been built, the Pocket Vision devices (PDA, laptop, etc) can run Sinch to download the latest Pocket Vision database.

Incremental extracts

Thereafter, daily extracts are incremental, meaning that only data changed (added, edited, deleted) since the last extract is sent to the practice for inclusion in Pocket Vision.

Vision Business Continuity (VBC)

Based on Pocket Vision, VBC provides off-line access to the practice clinical data in the event that access to the full Vision system is not available. Users in the practice will be limited to the key clinical functions available in the core Pocket Vision software (currently v1.2), eg History, Therapy, Prevention, Immunisations and Tests. This is an 'insurance policy' only to be used when communication with the main system is unavailable. It is a 'local' desktop installation - identical to a laptop installation except for licensing (which prohibits, for example, "sinching" across the network to a 'Resilience' laptop). Sinch happens automatically to VBC on signing on to the workstation.

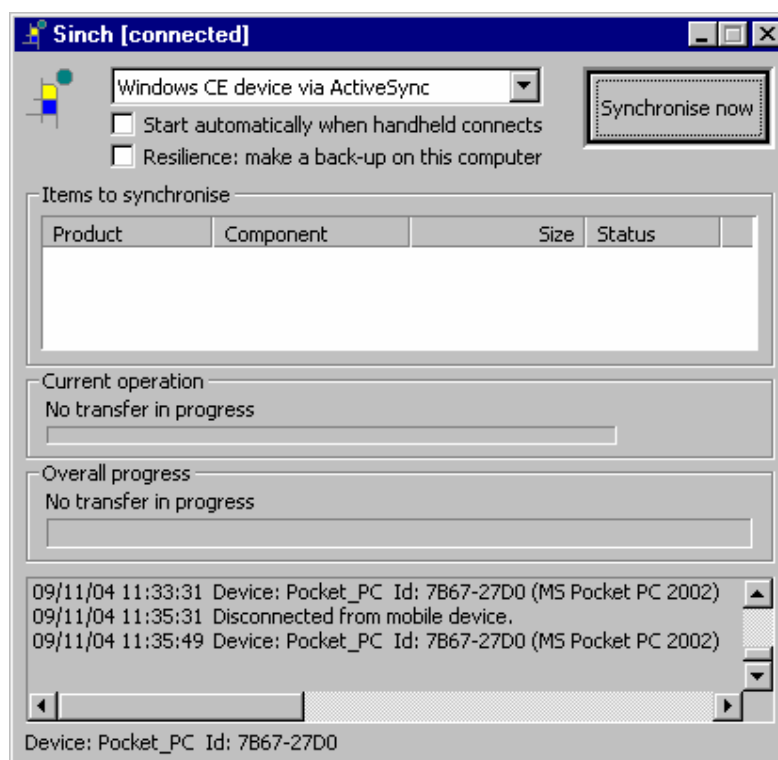
A new Vision Enterprise Installations VBC is set-up on site by engineers as part of the commissioning process.

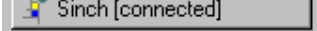
You can download the Vision Business Continuity User Guide from the INPS website on <http://www.inps3.co.uk/anm/anmviewer.asp?a=583&z=121>

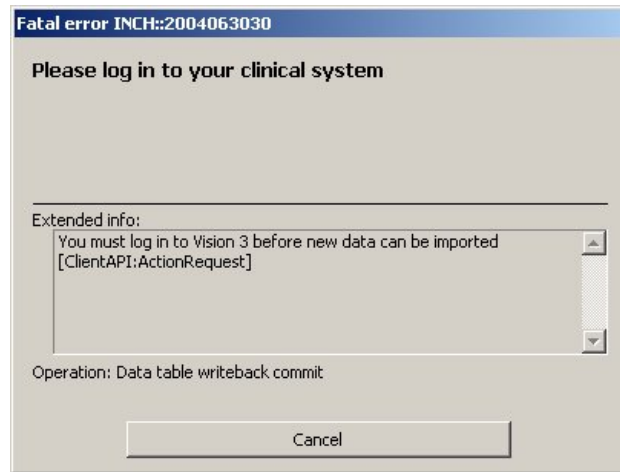
If you have VBC and PDA/Laptop Pocket Vision running on the same machine, the upgrade process must be run at the same time for all.

Normal daily routine for Pocket Vision users - Sinch

1. Place your PDA with newly entered data into its cradle attached to your own workstation. The cradle acts as a charger as well. The PDA sits in the cradle during the synch (download/upload) process. Other Vision users can be on the system during this process. Microsoft's software that connects the PDA to the PC - ActiveSync - is installed on the workstation that you are using to synchronise, but the actual synchronisation process is done using the Incharge program Sinch (ie that writes Vision data to and from the PDA).

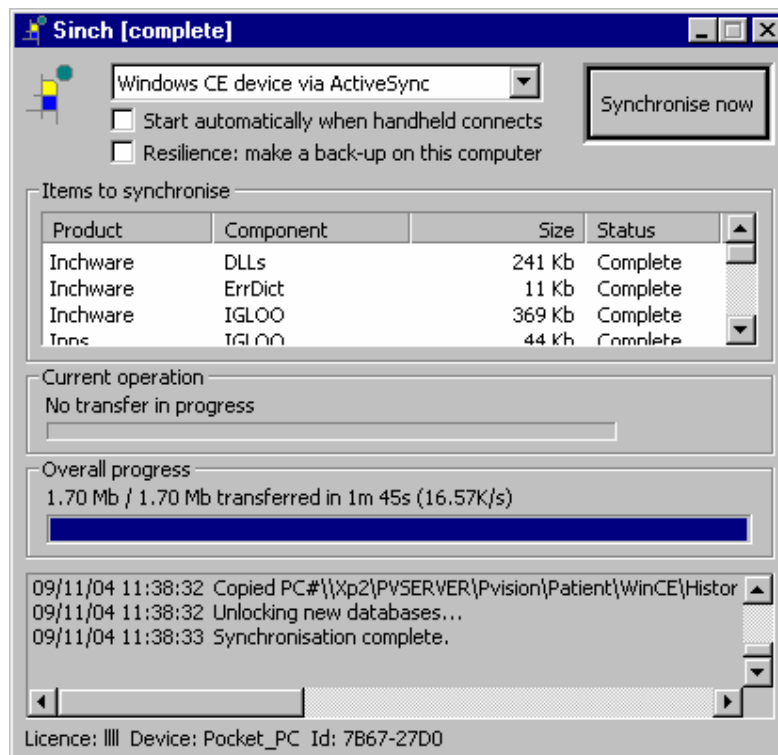


2. Maximise the Sinch screen by clicking on .
3. Press the Synchronise Now button, unless you have selected the option Start automatically when handheld connects.
4. During synchronisation, you may get an error message: Please log in to your clinical system. This means that you have not logged on to your remote desktop connection so Sinch cannot see the Vision system. To resolve, skip the error, open up your remote desktop session and re-start Sinch.



5. Wait until the synchronisation has fully completed (see screenshot below Synchronisation complete). The extracted incremental file is downloaded on to the PDA, and recently added entries on the PDA are uploaded to the Pocket Vision Server.

Note Make sure to let the synchronisation process complete successfully - do not interrupt it by removing the PDA from its cradle.



Synchronisation is complete

6. The PDA can now be removed from its cradle, though it will remain charging if left in place.
7. On your remote desktop, log in to Vision.
8. Once Vision is running, then the system will stop at any entry that needs extra data, for example:
 - Entries, such as Immunisations, that require extra information, eg stage of immunisation.
 - Any history entry of a diagnosis which can be included in a disease register, for example, Asthma, will display the prompt Do you want to include this patient in the [diagnosis, eg asthma] disease register?
 - Drug check warnings for therapy entries.

Check that the build process has run correctly

It is recommended that the PV Server should be left on overnight. The computer does not need to be logged in for the Pocket Vision build process to run

Data added in Pocket Vision will not appear in the Pocket Vision database until the next daily extract after the data has been written back. Follow the example below.

Enterprise Server - At night, the Enterprise Server automatically runs a Vision extract, which takes all the incremental data from the Vision server. This is data that has been added, amended or deleted since the last Vision Extract , eg, Mrs Brown's BP record. A full extract will have been run when your Pocket vision system was first installed.

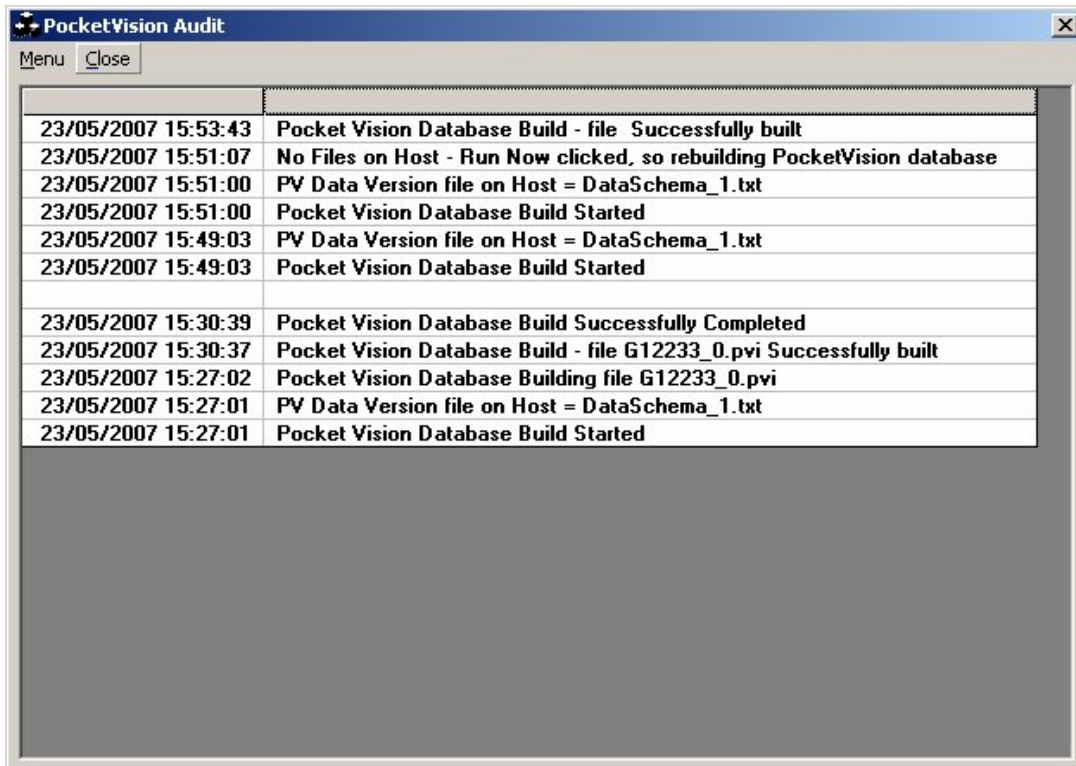
Pocket Vision Server - In the early hours of the morning at the practice, at the scheduled time which has been set by the engineer, the Pocket Vision Server automatically runs a Pocket Vision database build, picking up the incremental data file. Eg, Mrs Brown's BP is now transferred to the PVServer.

Check - If the Pocket Vision Database Build process is successful, the minimised icon for the Pocket Vision Audit (also called PV Monitor) on the taskbar has a green background.



. Clicking on the icon  displays the Pocket Vision Audit screen. The topmost item should say "Pocket Vision Database Build Successfully Completed" (see screenshot on next page).

Under the Menu option, Status refreshes the screen manually - it auto-refreshes every minute. We ask that you do not alter anything in the Configuration option. Run Now should not be used without Helpline guidance.




Successful Pocket Vision Database Build on the PV Audit screen

If the Pocket Vision Build is still in progress, then the icon has a yellow background



If the build process run in the early hours has been unsuccessful (ie the incremental data stored on the Enterprise Server has not imported correctly to the Pocket Vision

Server), then the icon has a red background.  First, have a look at the log file on the Pocket Vision Audit screen (click on the red icon) which details the errors. You may need to call the Helpline at InPS.

If there hasn't been a file to process for more than two days you will need to contact the helpline and ask them to check your daily Vision Extract

GP Workstation/PDA - The GP in the morning places his PDA in its cradle and presses Synchronise Now. This transfers new data from Pocket Vision to the Pocket Vision Server (eg Mr Smith's therapy). It also updates Pocket Vision with the incremental file, eg Mrs Brown's BP.

Enterprise Server - That night the Enterprise Server runs a Vision Extract again, taking up the day's incremental data, eg Mr Smith's therapy.

Pocket Vision Server - In the early hours of the morning, the Pocket Vision Server runs its Pocket Vision database build, picking up the incremental data file, eg Mr Smith's therapy.

GP Workstation/PDA - When the GP returns from calls and places his Pocket Vision in the cradle, and runs Synchronise Now, the incremental data file is picked up on to the PDA, eg Mr Smith's Therapy.

Running a manual Pocket Vision database build

If you need to run the Pocket Vision Database build manually, please contact the Help Line first.