

22 Read Dictionary

Version 4, 15.02.06

Selecting from the Read Dictionary	22-3
The Concept of Keywords	22-3
Keywords and codes in Read	22-4
Read Chapters	22-6
Find and use the correct Read term	22-6
Quick add of Read term from front screen	22-7
Navigating the Read Dictionary	22-9
Preferred Term Codes and synonyms	22-11
Read Formulary	22-12
Display from Formulary	22-12
User options to select from Formulary, or select by keyword or code	22-12
Add Read terms individually to Formulary	22-12
Add keyword, remove keyword, remove formulary entry	22-13
Populate Read formulary	22-14
Export and Import Read Formulary	22-14
Building a list of your own keywords	22-17
EXTRA Keywords for Read Dictionary	22-17
Prefixes used for Read selection	22-18
Medical Acronyms used for Read selection	22-19
Abbreviations used for Read selection	22-24
Useful Read Terminology	22-30
Changes and Updates to the Read Dictionary	22-31
Requesting new Read codes	22-31
Useful clinical Read codes	22-32
Generalised Symptoms	22-32
Cancer Read terms	22-32
Cardio-vascular related Read Terms	22-33
Cardiovascular Symptoms, Examination and Investigations Read terms	22-33
Cardiovascular Diagnoses Read terms	22-34
Cardio-vascular Referral, Intervention, Management	22-36
Endocrine, Diabetes, Metabolic Disorder Read terms	22-37
ENT Read terms	22-39
ENT Symptoms and O/E Read terms	22-39
ENT Interventions and Diagnoses Read terms	22-40
Eyes Read terms	22-40
Eyes Symptoms Read terms	22-40
Eyes Diagnoses and Interventions Read terms	22-41
Gastrointestinal Read terms	22-41
Gastrointestinal Symptoms, O/E Read terms	22-41
Gastrointestinal investigations and interventions Read terms	22-41
Gastrointestinal Diagnoses Read terms	22-42
Genito-Urinary / Gynae Read terms	22-43
Genito-Urinary Symptoms and H/O Read terms	22-43

Genito-Urinary/Gynae investigations, interventions etc	22-44
Genito-Urinary Diagnoses Read terms	22-44
Haematology Read terms	22-46
Blood Disorders Symptoms Read terms	22-46
Blood Disorders Diagnoses Read terms	22-46
Infectious Diseases Read terms	22-47
Major and Day Case Surgery Read terms	22-47
Mental Health Read terms	22-49
Psychiatric and Psychological Symptoms Read codes	22-49
Psychiatric and Psychological Diagnoses	22-49
Neurological Read terms	22-50
Nervous System Symptoms Read terms	22-50
Nervous System Diagnoses Read terms	22-51
Orthopaedic Read terms	22-52
Orthopaedic and trauma symptoms Read codes	22-52
Musculoskeletal Diagnoses Read codes	22-52
Respiratory Disease and Asthma Read terms	22-53
Respiratory Symptoms / Investigations /Interventions Read terms	22-53
Respiratory Diagnoses Read terms	22-55
Skin etc Read terms	22-56
Alcohol Read Terms	22-57
Smoking Read Terms	22-57
Cervical Smear Read Codes	22-58
FAQs - Read dictionary - How do I...	22-59
... display a list of Read keywords if the wrong match appears?	22-59
... look at the Read hierarchy?	22-59
... search from the Read formulary instead of the whole Read dictionary?	22-59
... enter a Read code instead of a keyword?	22-59
... update the Read formulary within Consultation Manager and add additional keywords?	22-60
... find the following Read terms?	22-60
... find out what some of the Read terminology means such as [D], NOS, [X]?	22-60
... add the same Read code to a group of patients?	22-60

Version 4, 15.01.06 - Alt GP Review

Version 3, 22.01.04

Selecting from the Read Dictionary

Most records on Vision are entered and stored as Read terms. Some screens already have a limited choice to relevant Read terms from which you can choose. On others, you will need to select the term yourself by entering either a keyword or a Read code.

Entering data on a patient's record is often made by selecting a suitable Read code and description from the Read dictionary:

- Either on a relevant screen, eg Blood Pressure Add, which is often presented within a Management Plan listing suitable entries in a category. Sometimes the Read term is already selected and you need only click OK; sometimes there is a short picklist for you to select from before you click OK.
- Or to save you searching around for the correct screen, you can go straight ahead and type a Read term using one of the shortcut Read entry methods, and select from the Read dictionary.

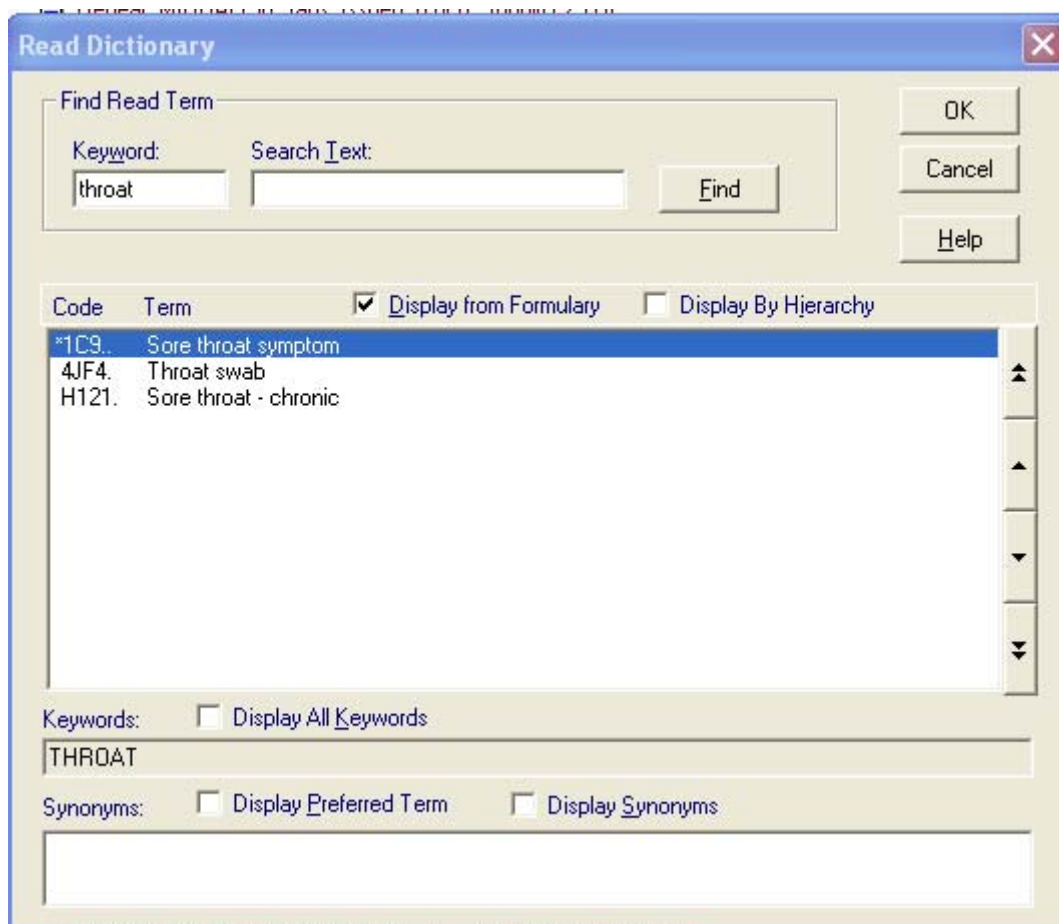
The Vision system will then offer you one or more structured data areas where the record is stored, eg Blood Pressure.

A sub-set of the Read dictionary can be created as your practice formulary, consisting of your practice's preferred Read descriptions.

How to enter a Read code is explained later in this section. First, an explanation about how the Read dictionary is structured.

The Concept of Keywords

- Many terms can be selected from the Read dictionary by entering a keyword, eg sinuses, anxiety.
- When you enter a keyword, you are given a list of Read terms, from different parts of the Read dictionary, which are relevant to that keyword.
- But less than half of all Read Terms have keywords. You can add your own keywords to Read terms.
- Keywords are not simply parts of the Read term, but have been specifically attached to the Read term when the Read dictionary was designed, for example, IHD is the keyword to find Ischaemic heart disease codes.
- Some Read terms have no keywords. These terms cannot be found by a keyword search, but can only be selected from the code hierarchy. G3... is the code for IHD - Ischaemic heart disease.
- You can attach new keywords to a Read description (see "Add Read terms individually to Formulary" on page 12).
- Ensure that all Read terms in your practice formulary have at least one keyword attached.
- Use a simple, but effective keyword system which everybody in the practice is aware of and understands (see "Building a list of your own keywords" on page 17).



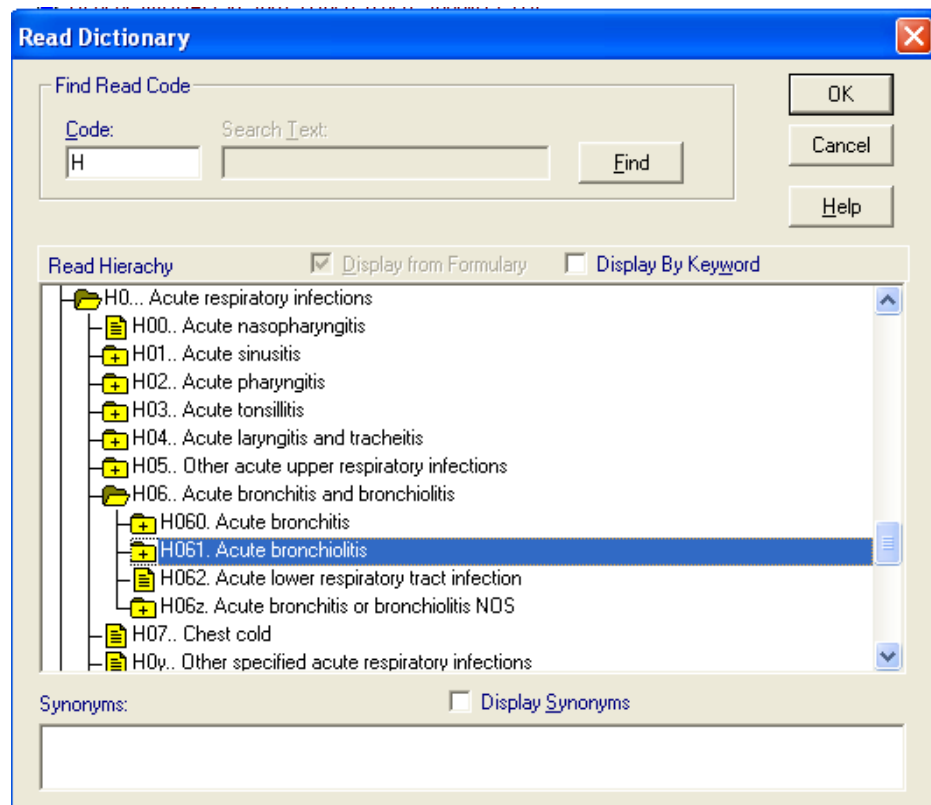
Display by keyword – the user has entered a keyword of throat which displays terms re throat from different parts of the dictionary – codes beginning with 1 are symptoms, those with 4 laboratory procedures, and with alphabetic letters diagnoses by system, eg H for respiratory disease

Keywords and codes in Read

You can select from the Read dictionary either using keywords (Read's or your own), or by code. The dictionary is a hierarchical structure consisting of five levels of codes, giving more detail as you go down. Some codes may have keywords, which are shortcut ways of selecting codes. The keywords listed here at those that are part of the Read dictionary. Here are some examples of the hierarchy:

Code	Read Description	Keyword
C...	Endoc/nutr/metab.immun.disease	
C0...	Disorders of thyroid gland	<i>thyroid</i>
C05..	Thyroiditis	<i>thyroiditi</i>
C050.	Acute thyroiditis	
C0502	Abscess of thyroid	<i>abscess thyroid</i>

H...	Respiratory system disease	<i>respirator</i>
H0...	Acute respiratory infections	<i>acute, infection, respirator</i>
H06..	Acute bronchitis and bronchiolitis	
H060.	Acute bronchitis	<i>bronchitis</i>
H0602	Acute purulent bronchitis	<i>purulent</i>



Display by Hierarchy – using Code H as starting point, the user has displayed sub-levels in the chapter H on respiratory system diseases

Read Chapters

Read codes have five characters. All codes begin with one of the following characters 0-9 or A-Z, each being a different category of the description, eg: *H31.. Chronic Bronchitis*, from chapter H - Respiratory system diseases.

0 Occupations	G Circulatory system diseases
1 History / symptoms	H Respiratory system diseases
2 Examination / signs	J Digestive system diseases
3 Diagnostic procedures	K Genitourinary system diseases
4 Laboratory procedures	L Complications of Pregnancy, childbirth & puerperium
5 Radiology / physics in medicine	M Skin & subcutaneous tissue diseases
6 Preventative procedures	N Musculoskeletal & connective tissue diseases
7 Operations, procedures, sites	P Congenital anomalies
8 Other therapeutic procedures	Q Perinatal conditions
9 Administration	R [D] Symptoms, signs & ill-defined conditions
A Infectious & parasitic diseases	S Injury & poisoning
B Neoplasms	T Causes of injury & poisoning
C Endocrine / nutritional / metabolic / immunity disorders	U [X] External causes of morbidity & mortality
D Diseases of blood and blood forming organs	Z Unspecified conditions, community codes
E Mental disorders	
F Nervous system & sense organ diseases	

Find and use the correct Read term

- Decide which chapter the code is under, and determine level in hierarchy accordingly. Pick the correct type to ensure reliable output - Chapter 1 is History and symptoms, where the systems chapters A-Z cover diagnoses. R can be used for a working diagnosis.
- Avoid abbreviations which could result in several different descriptions
- Avoid terms such as PAIN, ACUTE and CHRONIC which result in massive picklists
- Use the combination of keyword and text string search to narrow down
- Be specific but not too specific (e.g. CONTRACEPTION would not find any entries with keyword CONTRACEPTIVE - therefore use CONTRACEP)
- Set up and maintain a Read Formulary with practice-specific contents to ensure ease and consistency of data entry across the whole practice team
- If Read codes are known, they can be entered on the Read Term Add or History screen by preceding the code with a #, eg #F45 to enter glaucoma.

Quick add of Read term from front screen

The following are the quick ways of selecting a Read term, by displaying a Read term add screen on the Patient Record. If you do not understand some steps, other sections should help to explain the concept of keywords and codes for you.

- 1 When you have the Patient Record displayed, and a consultation started:
 - Either just start typing straightaway - for this to happen, you need to make sure that either **Enable Read Pop-up dialog** is checked in Consultation - Options - Setup - Patient Record, or the cursor is in a Read Term Add window.
 - Or in the classic view of the Patient Record, click on the green Record line, which is in the red top section of the left-hand navigation pane (MRO column) on the Patient Record.

This displays a Read Term - Add window.



- Or display the History Add screen (Add - Medical History)

- 2 In the **Read term Add** window:
 - **To select by keyword** - Either type in one or two partial keywords in the Read term for Characteristic window, eg asthma, or Abdo pai. Other keywords are suggested later in this section.
 - **To select by code (hierarchy)** - Or if you know the Read code, type # then the code, eg #H for Respiratory System Diseases, using the Shift key to make the letter upper case.

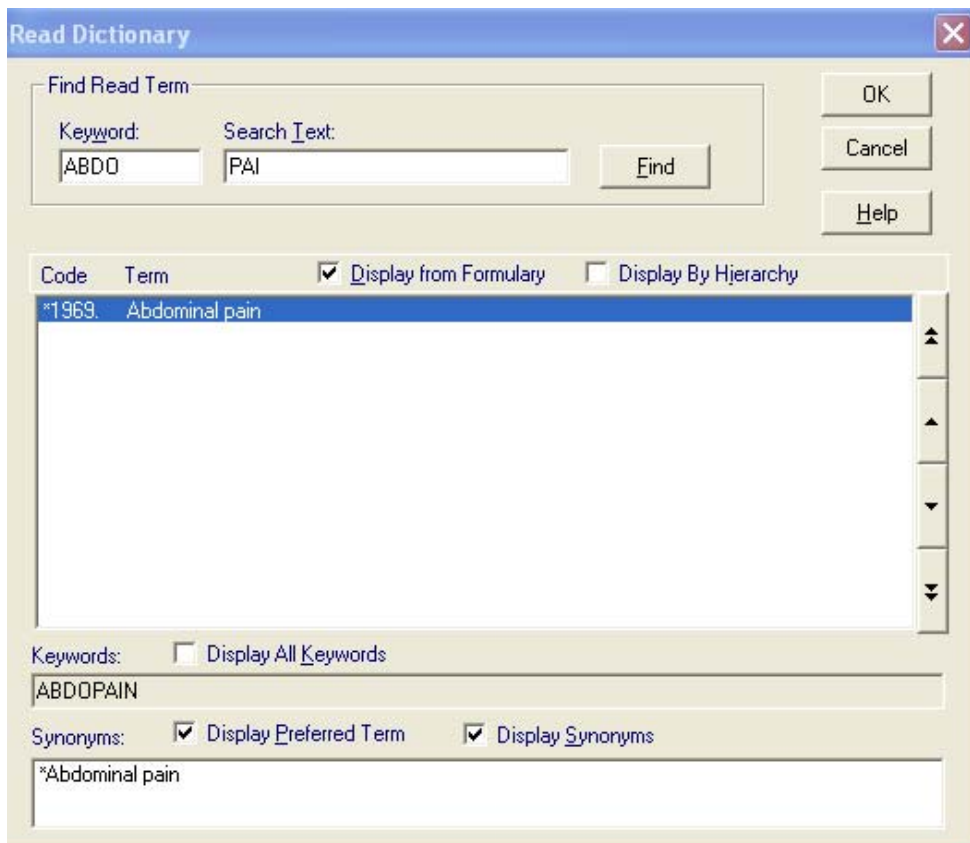
Read Term for Characteristic:
abdo pai

- 3 Press the **Enter** key to display a Read Term which matches your entry, eg *1969 Abdominal pain* - or instead of Enter, press F3 to go to the back Read select screen, either to the keyword list, or to the hierarchy if you started with a code entry.
- 4 The cursor stays in the Read Term window. If you want this displayed term, click on **OK** and complete History Add.

Or you can use the down arrow key ↓ to get the next term that matches your two words, eg *196..11 Abdominal pain type*. Repeat this until you reach the description you want.



- 5 If you cannot find what you want, press <F3> to reach the back Read Dictionary screen. The keyword will be remembered in *Keyword*, and a list of relevant descriptions displayed. (If you delete out this keyword then press Alt-Backspace, the keyword will be restored you to what was originally typed in). Double click on the term you want.

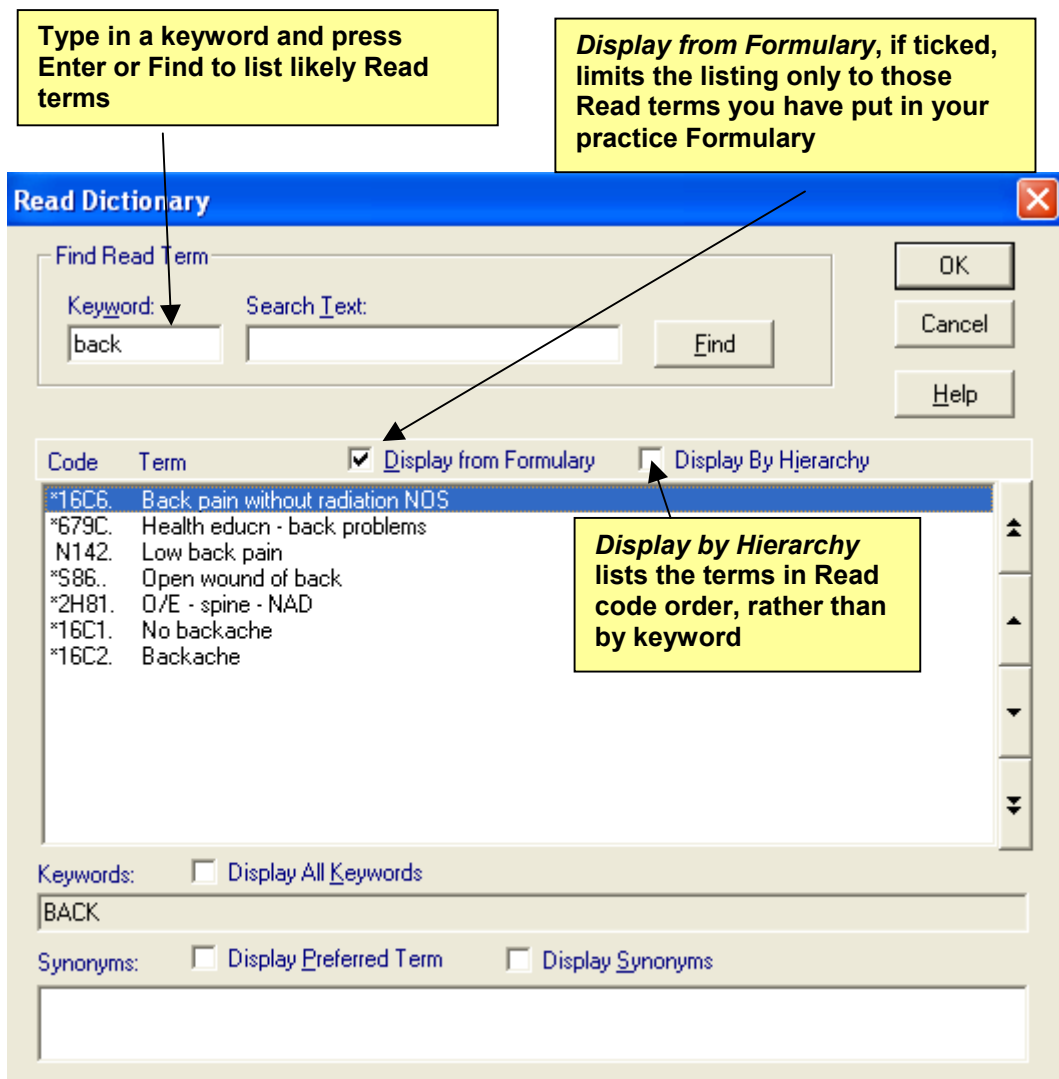


- 6 Look at the hierarchical list (it remembers what you typed in) and select the description you want by double clicking on it.
- 7 Think about putting this term in the Formulary if it is used regularly.
- 8 If you right mouse click at the Read Dictionary screen, you can see the keyword, if any, of the code that is currently highlighted. This is where you can add keywords of your own. More about this later in "Building a list of your own keywords" on page 17.

Navigating the Read Dictionary

The way to reach the Read Dictionary screen to select a Read term depends on the data entry screen you are at.

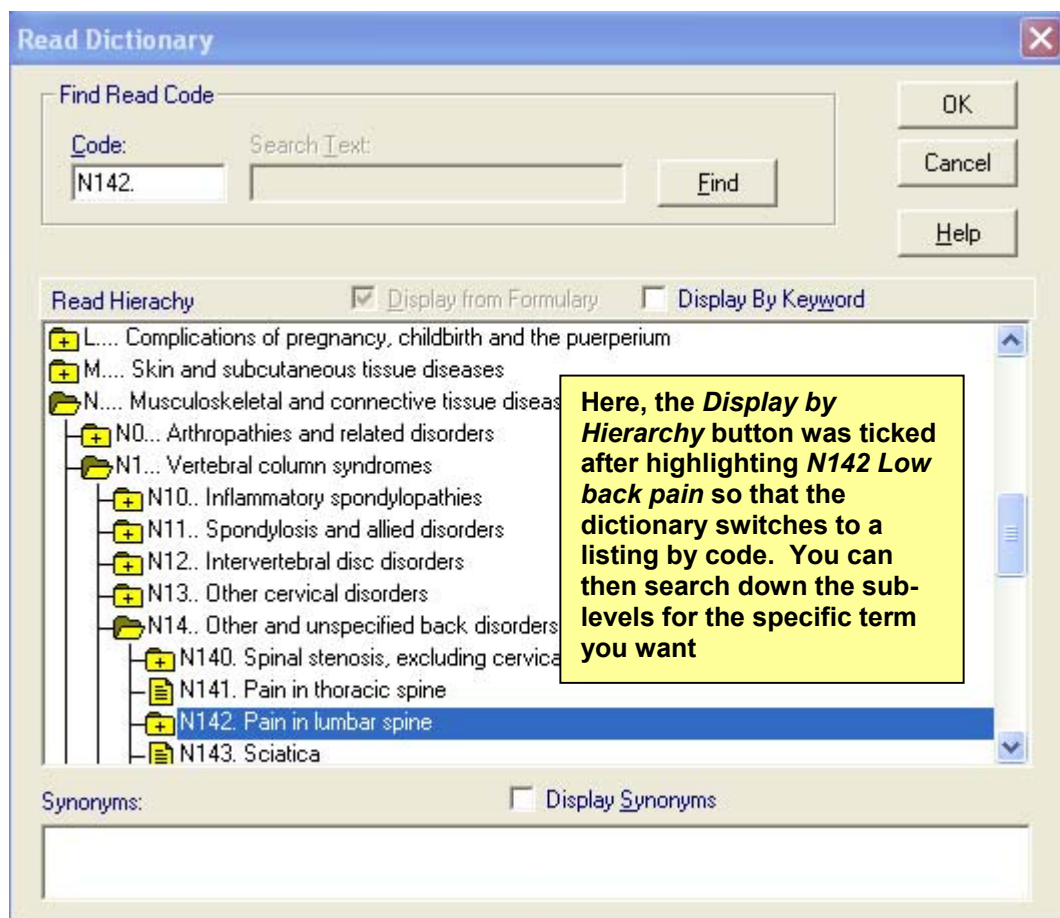
- 1 At a Read term window, either double click, or press <F3> function key on any Read term you have typed in or the empty Read term field. The Read Dictionary screen is displayed.



- 2 If there is no keyword "remembered" from the front screen, you will need to type in a keyword and either click on the Find button or press <Enter> to display a list of Read Terms.
- 3 If the required entry is shown on the list, double click on it or use the ↓ key to highlight it and press <Enter> to select.




The following options are available if the required entry is not listed:


- **To search from your Formulary or the whole Read dictionary** - Deselect **Display from Formulary** by removing the tick/check from the box (either click with the left mouse button or use the <Tab> key to highlight **Display from Formulary** and then press the <Spacebar> to remove the tick/check. This will display all matching entries from the whole dictionary.
- **List and Select by Code** - Bearing in mind the fact that many Read Terms do not have keywords, it may be necessary to display entries by code (hierarchy). To do this, highlight an entry then click on **Display by Hierarchy** to tick/check the box (with the keyboard, use the <Tab> key to highlight and the <Spacebar> to tick/check the box).



A screen similar to the one above will be displayed.

The path through the hierarchy is clearly visible:

- To open one of the closed folders  and view the contents of that branch of the hierarchy, double click on the symbol (NB, not the line, as this selects that line). The folder will then open . The selected entry is highlighted.
- To close an open folder, double click on .

- Any lines with a 'piece of paper' symbol  cannot be expanded any further - they are at the bottom of that branch of the hierarchy. If you double click on one of these, you will select that Read term.
- In some instances it may be easier to start again, but this time enter a different keyword and possibly some search text as well. Note that any text entered in Search text has to be part of the Read Term.
- It may also be useful to display synonyms by clicking on the relevant field on the screen.

Preferred Term Codes and synonyms

In addition to the 5 digit Read Code, the system stores synonyms with additional 2 digit codes. Code 00 indicates the preferred Read Code which is held in the Read Hierarchy, for example:

G111.00 Rheumatic mitral insufficiency

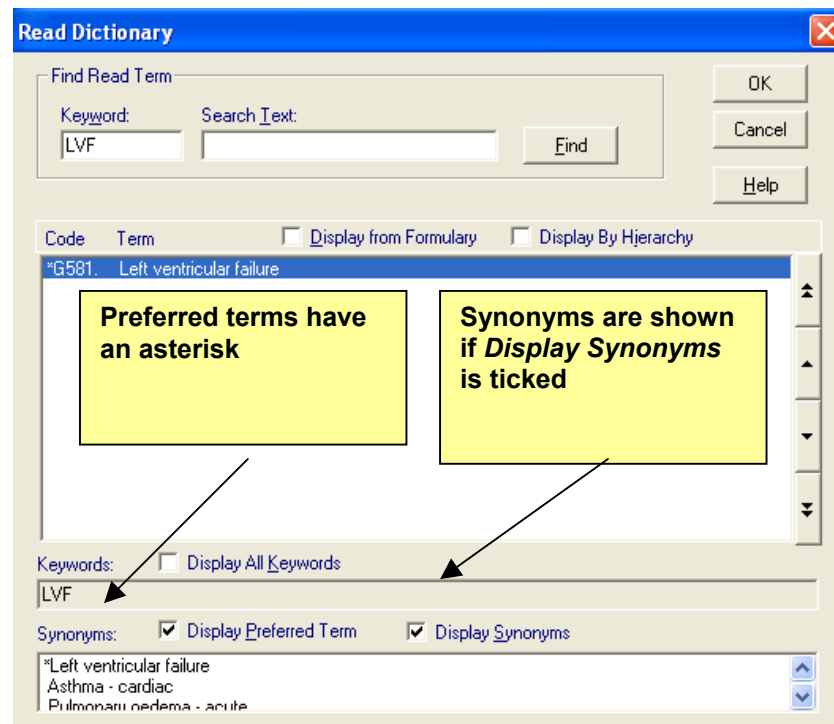
Other synonyms have codes 11, 12, 13 and so on:

G111.12 Mitral regurgitation - rheumatic

Note that synonyms are usually found by selecting a term from the hierarchy and displaying all synonyms.

Synonyms can be included in the Read formulary with their own keywords, and can then be found by a keyword search.

Any entry with an asterisk on the list of synonyms is described as a preferred term, ie one ending with 00. For example, *1371.11 Non-smoker*, its synonym.



Read Formulary

A Read formulary is a sub-set of the full Read dictionary. Practices can define their own formulary of Read terms and use this shorter list from which to make Read dictionary selections. Additional keywords can also be added to Read terms (see the section Extra Keywords for Read Dictionary on page 17). Read formularies can also be exported and imported between practices.

The formulary can be maintained either within the Read dictionary back screen in Consultation Manager, or within **Populate Read Formulary** (Modules menu, Vision front menu). Originally this latter option was used for practices converting from OXMIS problem dictionary to populate their formularies.

Display from Formulary

If the option **Display from Formulary** is selected, only Read terms within the Formulary will be displayed. At any time while at the Read Dictionary screen, you may switch to selection from the full Read dictionary by de-selecting Display from Formulary.

When displaying the full Read dictionary, there is no way of telling which terms are within the Formulary.

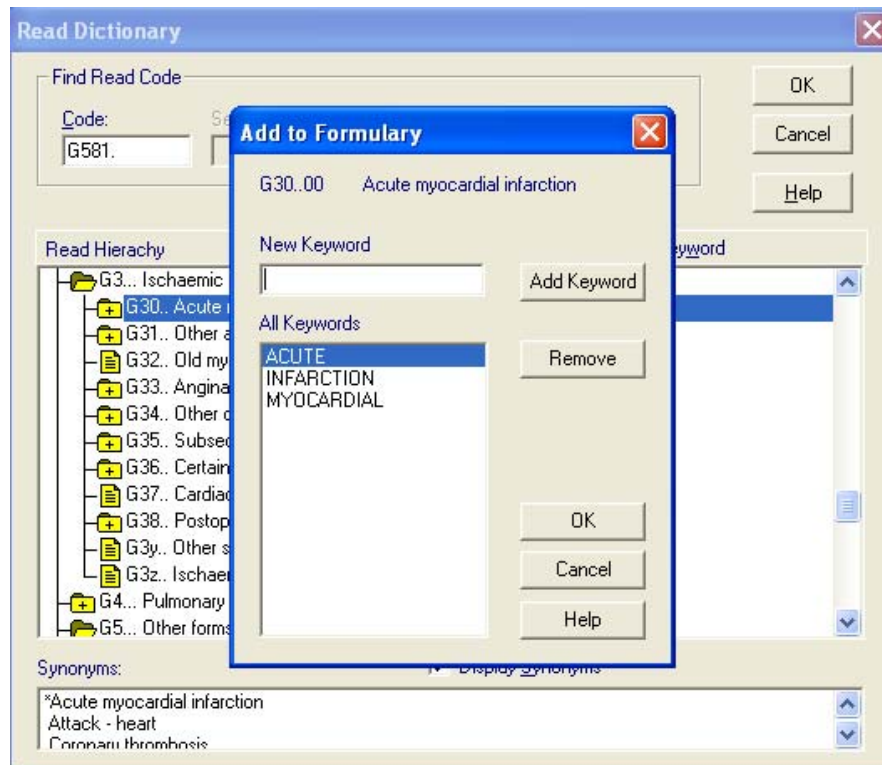
User options to select from Formulary, or select by keyword or code

In **Security – Edit User**, a system manager can set a user to select Read terms by default either from the formulary or from the full drug dictionary, or initially by keyword or by code. Whatever is set can be overridden at the time of selecting the Read term.

Add Read terms individually to Formulary

Adding Read terms individually is the way to create a Read formulary, or to expand on a formulary created from Populate Read Formulary. To do this within Consultation Manager:

- 1 First, from the Read Dictionary screen, find, display and highlight a Read term that is to be included in the Formulary. For example, to add *myocardial infarction* to the formulary, enter a keyword of **MI** and click on **Find**. Amongst the entries will be *G30.. MI - Acute myocardial infarction*.
- 2 At the displayed list of entries, click with the **left** mouse button on the required line to highlight it. Then click with the **right** mouse button to display an **Add to Formulary** screen.



This term already has the keywords of MI, M.I., M-I and MI. have already been added. Clicking OK will add the term to the practice formulary

- 3 **If you click on OK, the term will be added to the formulary.** But you should make sure you have at least one keyword for your new formulary entry, otherwise it will be very difficult to find.
- 4 If necessary, type in a new keyword by which you can find this entry, then click on **Add Keyword**.
- 5 To remove a keyword that you have added previously click on **Remove** to delete that keyword. You are not, however, able to delete keywords that are integral to the Read dictionary.

Add keyword, remove keyword, remove formulary entry

To see what keywords a term has, on the back Read dictionary screen when in keyword mode, highlight a line and tick the **Display All Keywords** box, or right click on a Read term to view and add new keywords. , :

Existing formulary entries can be updated by right clicking. First click the **Display by Formulary** option to list only formulary items.

If you right click on an item in your formulary, you display the Update Formulary screen.

- **Either add a keyword** by typing free text in **New Keyword** then clicking on **Add Keyword**.
- **Or remove a keyword** by highlighting a keyword and click on **Remove**.
- **Or remove this term from the practice formulary** altogether by clicking on **Delete Entry**.

Populate Read formulary

From the Vision front menu, under **Utilities** menu, select **Read Formulary**, or select **Populate Read Formulary** from the **Modules** menu.

- Use **Formulary – Maintain** to add or remove Read terms individually from your practice formulary, and add your own user-defined keywords to help selection (follow the steps in Add Read terms individually to Formulary on page 12).
- Export and Import Read Formularies so they can be shared between practices – see Export and Import Read Formulary below.

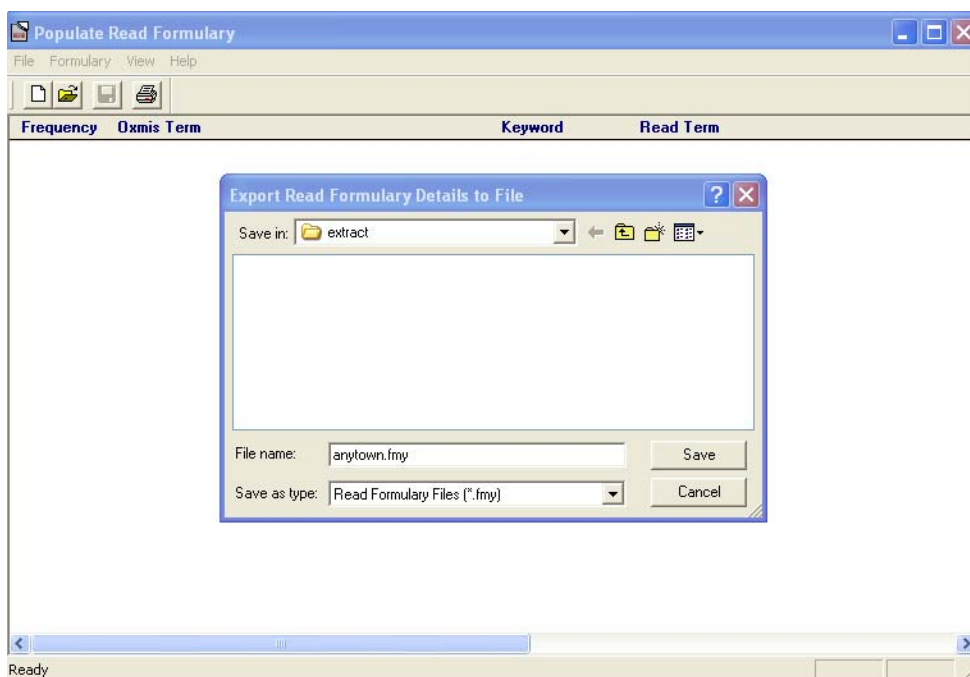
One of the original functions of Populate Read Formulary is now no longer relevant. It was for practices converting to Vision from VAMP Medical, where OXMIS entries were used in *History* and *Prevention* and used to Create List, Browse List, and Replace Formulary with List of cross-reference Read terms.

Warning – the option – **Formulary – Remove All Formulary Entries** will do just that! You may want to restrict access to Populate Read Formulary in Security to system managers only.

Export and Import Read Formulary

Formulary Export - From Vision front menu, **Modules – Populate Read Formulary**:

- 1 Select **File - Formulary Export**.

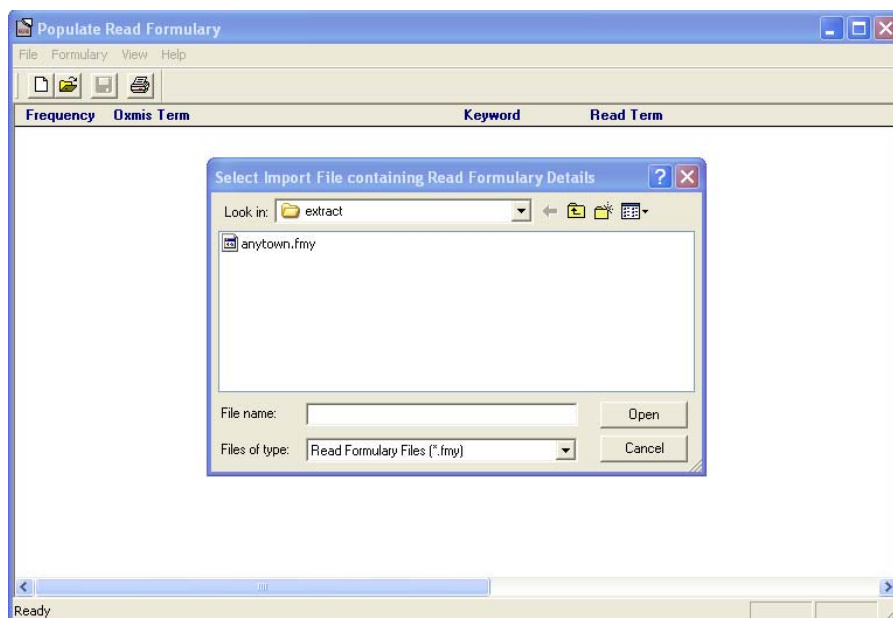


- 2 At the **Export Read Formulary Details to File** screen, give the formulary a filename before the extension of .fmy. It is saved by default to the c:\extract directory.
- 3 Click OK.
- 4 If successful, you should see a message: *The formulary details have been saved successfully.* Click OK.
- 5 You can then go to the \extract directory and copy the *.fmy file to disk.

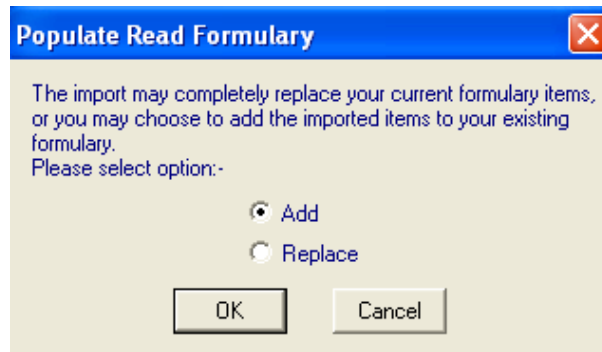


Formulary Import - From Vision front menu, Modules – Populate Read Formulary:

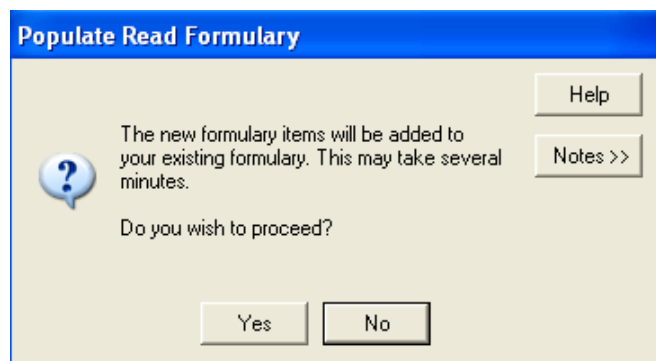
- 1 Copy the exported Formulary file from disk to c:\extract.:
- 2 Select **File - Formulary Import.**



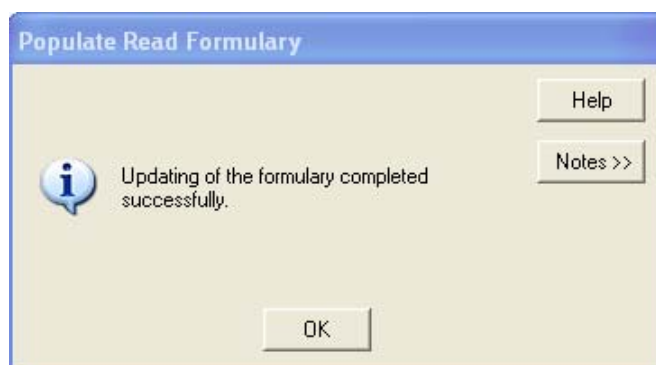
- 3 Select the formulary file to be imported.
- 4 Click OK.



- 5 You are warned that the Formulary to be imported may entirely replace your current Formulary. You have a choice of Add or Replace: **Add** will only add any items not already in your Formulary; while **Replace** replaces the entire Formulary. Choose one of these and click OK.
- 6 Another message confirms what you have selected and warns this may take some time. Click Yes to confirm and proceed.



- 7 At Updating of the formulary completed successfully, click OK.



Note that the Formulary Import will not be allowed if the version of Read dictionary used when the imported formulary is created is later than the version of the dictionary currently being used.

Building a list of your own keywords

EXTRA Keywords for Read Dictionary

We encourage you to enter your own keywords in a structured way to make Read coded entries quicker during consultations. It is particularly an advantage for each formulary term to have its own keyword. .

Some terms have keywords and some do not. Add your own where the keyword is missing: find the term on the Read Dictionary screen, and right mouse click for the Add to Formulary screen. Type in your own keyword and select Add Keyword, click OK.

Included are three lists of keywords - Prefixes, Acronyms, and Abbreviations, as a structured way allowing other practice members to use the same keywords.

Prefixes: Prefix your keyword with a short mnemonic and list from the first entry for a list of related codes:

PAIN : painleg, painneck, painback

OPER : operhyst, operappend, operhip

PMH :

ABDO :

You could set up your own keyword, eg: NG for a list of common malignancies (currently a keyword for nasogastric tube)

Acronyms:

CTS - Carpal Tunnel Syndrome (F340.)

OC - Oral Contraception (614..)

MI - Acute Myocardial Infarction (G30..)

OM - Acute Otitis Media (F510.)

CCF - Congestive Cardiac Failure (G580.)

DVT - Deep Vein Thrombosis (G801.)

You could set up your own keyword, eg:

PMR - Polymyalgia rheumatica

Abbreviations: You could set up your own abbreviation keywords, eg:

REMSUT removal of sutures (7G22.)

EYENAD Eye examination normal (22E1.)

BACKNIL no backache (16C1.)

BACKNAD O/E - spine NAD (2H81.)

COPAIN C/O:a pain (1D13.)

The keywords for negative examination findings could all have a prefix of 0 (zero).

Prefixes used for Read selection

If you prefix your keyword with a short mnemonic and list from the first entry, then you will obtain a list of related codes, so NG will give you a list of the common malignancies encountered.

PREFIX	for	PREFIX	for
ABDO	Abdominal details	NEW	New patient admin
ADMIT	Admit to hosp	NG	Neoplasm
ADV	Advice	NOTIF	Notification of Infect disease
ANC	Antenatal care	OA	Osteoarthritis
ASP	Aspiration	OK	Reassure
ASSESS	Assessment	OP	Operation
AUDIO	Audiometry	PAIN	c/o Pain
BEN	Benefits	PH	Past History
BRUISE	Bruise	PHYS	Physio details
BY	Referred By	PMH	Past History
CABG	Coronary artery bypass graft	POISON	Poisoning
CANC	Cancellation	RED	Reduced
CATH	Catheter	REF	Referral details
CAUT	Cautery	REFUSE	Refusal of procedure
CELL	Cellulitis	REQ	Request
CHEST	Chest	RISK	Occupational exposure
COMP	Complaint	SB	Seen by
CONTACT	Infect disease contact	SKIN	Skin details
CONTR	Contraception	SMEAR	Cervical cytology
COUNS	Counselling	SOB	Shortness of breath
DEATH	Death of person	SORE	Sore ...
DIED	Death administration	SPEECH	Speech Therapy details
DISCH	Discharge details	SPOUSE	Spouse details
EYE	Eye problems	STOOL	Stool
FAMILY	Family details	SWAB	Swab
FB	Foreign body	SWELLING	Swelling
FH	Family history	TEND	Tenderness
FINGER	Finger details	TEST	Result
FRACT	Fracture	TM	Tympanic membrane
FU	Follow up	TOE	Toe details
GANG	Ganglion	TRAVEL	Travel
INJ	Injection	ULCER	Ulcer
INJURY	Injury	UNFIT	Unfitness
LAC	Laceration	URINE	Urine
LET	Letter	USS	Ultrasound
LOSS	Loss	VE	Vaginal examination
LN	Lymph nodes	VIS	Visual details
LUMP	Complaining of a lump	WL	Waiting list
MANIP	Manipulation	WORK	Work details
MED	Medication	WOUND	Wound details
MS	Minor Surgery	WT	Weight
NASAL	Nasal symptoms	XR	Xray

Medical Acronyms used for Read selection

Medical Acronyms, such as CTS - Carpal Tunnel Syndrome, PMR - Polymyalgia Rheumatica, will now all work, as well as the ones that are already in Read like OC - Oral contraception, OD - Overdose of drug. Where entries are marked in column 4 as No under *In Read already*, then you will need to add the new keyword to trigger this Read term. However, you may find your vision system has been built with many of these additional keywords already.

Read CODE	ACRONYM	TERM	In Read Already
13O5.00	AA	Attendance allowance	No
G71..00	AAA	Aortic aneurysm	No
431..00	ABO	ABO blood grouping	Yes
S542100	ACL	Partial tear, knee, anterior cruciate ligament	No
E2E0.00	ADD	Child attention deficit disorder	No
G573.00	AF	Atrial fibrillation and flutter	Yes
2A4..00	AJ	O/E - ankle reflex	No
7K24.12	AMP	Austin Moore hemiarthroplasty of hip joint not using cement	No
F510.00	AOM	Acute non suppurative otitis media	No
L11..11	APH	Antepartum haemorrhage	Yes*
7F10.00	ARM	Surgical induction of labour	Yes
N100.00	AS	Ankylosing spondylitis	No
G120.00	AS	Rheumatic aortic stenosis	Yes
7414511	BAWO	BAWO (Bilateral antral washout)	Yes
19EA.00	BHC	Change in bowel habit	No
8344F00	BKWB	Below knee weight-bearing cast	No
19C..00	BNO	Constipation	No
19C1.00	BOR	Not constipated	No
662..12	BPS	Hypertension monitoring	No
44U..11	BS	Blood sugar result	Yes
7L14311	BTS	Blood transfusion	No
7920y00	CABG	Saphenous vein graft replacement of coronary artery OS	Yes
N30z811	CC	Costochondritis NOS	No
H3...11	COAD	Chronic obstructive airways disease	Yes*
K05..00	CRF	Chronic renal failure	Yes
F511.00	CSOM	Chronic otitis media with effusion, serous	Yes

7056000	CTR	Carpal tunnel release	No
F340.00	CTS	Carpal tunnel syndrome	No
G66..11	CVA	CVA unspecified	Yes*
7E07200	D&C (NotD+C)	Dilation of cervix uteri and curettage of uterus NEC	Yes
19FZ.11	D&V (Not D+V)	Diarrhoea & vomiting, symptom	Yes
7221300	DCR	Dacryocystorhinostomy NEC	No
9N42.00	DNA	Did not attend - no reason	Yes**
8HK..00	DV	Domiciliary visit requested	Yes
G801.11	DVT	Deep vein thrombosis	Yes
7M37100	DXT	Radiotherapy NEC	No
3212.00	ECG	Standard ECG	Yes
7F12111	ELSCS	Elective lower uterine segment caesarean section (LSCS)	No
7E08000	ERPOC	Dilation cervix & vacuum aspirat products conception uterus	No
7E08000	ERPC	Dilation cervix & vacuum aspirat products conception uterus	Yes
N14y.11	FJS	Facet joint syndrome	No
61...00	FP	Contraception	Yes
2H41.00	FROM	O/E - joint movement NAD	No
9R7..00	FROM	Loan of items from practice	Yes
R034200	FTT	[D]Failure to thrive	No
8H8..00	FUA	Follow-up arranged	No
611..00	GCA	General contraceptive advice	No
A75..11	GF	Glandular fever	Yes*
R2yz.11	GOK	[D]God only knows	Yes
J11..00	GU	Gastric ulcer - (GU)	Yes*
649..00	HC	Child head circ. centiles	Yes
6925.11	HGV	HGV - heavy goods vehicle exam	Yes
13G6	HH	Home help	Yes
J34..11	HH	Hiatus hernia	Yes
S640111	HI	Minor head injury	No
8A31.00	HII	Head injury - nursing supervis	No
4JK2.00	HVS	High vaginal swab taken	No
J521.11	IBS	Irritable bowel syndrome	Yes*
13O7.00	ICA	Invalid care allowance	No

N07..00	IDK	Internal derangement of knee	No
M230000	IGTN	Ingrowing great toe nail	No
G3...13	IHD	IHD - Ischaemic heart disease	Yes
K595.00	IMBR	Intermenstrual bleeding regular	Yes
K596.00	IMBI	Intermenstrual bleeding irregular	Yes
7L18	IMI	Intramuscular Injection	No
2128.00	ISQ	Patient's condition the same	Yes
7L15.00	IV	Other intravenous transfusion	Yes
2483.11	JVP	O/E - JVP raised	Yes
2A2..00	KJ	O/E - knee reflex	No
16C5.00	LBA	C/O - low back pain	No
16C5.00	LBP	C/O - low back pain	Yes
44D..11	LFT	Liver function tests	Yes
1978.00	LIF	Left iliac fossa pain	Yes
1B6Z.00	LOC	Consciousness disturbance NOS	Yes*
N122.00	LPID	Lumbar disc displacement	No
7F12.00	LSCS	Elective caesarian delivery	Yes
G30..15	M.I.	MI - acute myocardial infarction	Yes
954..00	MATB	Mat B1 - cert of expected conf	Yes
9D1..00	MED3	MED3 - doctor's statement	Yes
9DF..00	MED4	MED4 Doctors statement	Yes
9D2..00	MED5	MED5 - doctor's special stat.	Yes
13G7	MOW	Meals on wheels	Yes
8HH3.00	MOW	Arrange meals on wheels	Yes
F20..00	MS	Multiple sclerosis	Yes
8H74.00	MW	Refer to mid-wife	Yes*
2HA1.00	NBI	O/E - no bone abnormal	No
Q4z..12	NND	Neonatal death	No
S30..00	NOF	Fracture of neck of femur	Yes
614..11	OC	Oral contraception	Yes
SL...15	OD	Overdose of drug	Yes
8C9..00	OK	Reassurance given	No
F510.00	OM	Acute non suppurative otitis media	Yes
9K00.00	OMP	GOS18 received from OMP	Yes
8HE1.00	OPD	Discharged from outpatients	Yes
658..00	OPV	Polio vaccination	Yes

N211z11	PAS	Painful arc syndrome	No
K597.00	PCB	Postcoital bleeding	Yes
61A..11	PCC	Morning-after pill	No
S542200	PCL	Partial tear, knee, posterior cruciate ligament	No
G401.00	PE	Pulmonary embolism	Yes
3395.12	PFR	PFR - peak flow rate	Yes
K409.00	PID	Acute pelvic inflammatory disease	Yes
N122.00	PID(L)	Lumbar disc displacement	Yes (L)
K5A1.00	PMB	Postmenopausal bleeding	Yes
N20..00	PMR	Polymyalgia rheumatica	No
1C84.00	PND	C/O - post nasal drip	No
1736.00	PND	Paroxysmal nocturnal dyspnoea	Yes
62S..11	PNE	Postnatal exam. - maternal	No
62R..00	PNV	Postnatal visits	No
L36..00	PPH	Postpartum haemorrhage (PPH)	Yes*
43Z2.00	PSA	Prostate specific antigen	Yes
Eu43100	PTSD	[X]Post - traumatic stress disorder	No
R006.00	PUO	[D]Pyrexia of unknown origin	Yes
N040.00	RA	Rheumatoid arthritis	Yes
44T1.00	RBS	Random blood sugar	Yes
J303012	RIH	Right inguinal hernia	Yes
9D4..00	RM7	RM7 - refer patient to RMO	No
235..12	RR	O/E - respiratory rate	No
66P2.00	RVD	Follow-up risk drug assessment	No
N211600	SAB	Subacromial bursitis	No
G60..00	SAH	Subarachnoid haemorrhage	Yes
03FE.00	SEN	State enrolled nurse	No
183..00	SOA	Oedema	No
1739.00	SOB	Shortness of breath	Yes
1731.00	SOBN	No shortness of breath	No
8HA2.00	SOS	Return only if necessary	Yes
7G1G.13	SSG	Split skin graft	Yes
13O2.00	SSP	Statutory sick pay	Yes
G57y300	SSS	Sick sinus syndrome	No
N211300	SST	Supraspinatus tendinitis	No
G755100	TA	Temporal arteritis	No

7E04300	TAH	Total abdominal hysterectomy NEC	Yes
1683.00	TATT	Tired all the time	Yes
A1...00	TB	Tuberculosis	Yes
8H8..00	TCA	Follow-up arranged	Yes
7K20.1G	THR	THR - Total prosthetic replacement of hip joint using cement	Yes
G65..12	TIA	Transient ischaemic attack	Yes*
8BA2.00	TLC	Terminal care	No
8CC.00	TLC	Tender Loving Care	Yes
J046.00	TMJ	Temporomandibular joint disorders	Yes*
7E08600	TOP	Termination of pregnancy NEC	Yes
8HA2.00	TRAIN	Return only if necessary	No
4JF4.11	TS	Throat swab	No
442..12	TSH	TSH level	Yes
656..00	TT	Tetanus vaccination	Yes
7B39000	TUR	Transurethral prostatectomy	Yes
7B39000	TURP	Transurethral prostatectomy	No
239..00	TVF	O/E - vocal fremitus	No
66K9.00	TWOC	Trial without catheter	No
H05z.11	URTI	Upper respiratory tract infection NOS	Yes
62G..00	US	Antenatal ultrasound scan	Yes
9N47.00	UTA	Appt cancelled by patient	No
K190.00	UTI	Urinary tract infection, site not specified	Yes
8CD..00	UWG	Usual warning given	Yes
2126.00	VMI	Patient's condition improved	No
P54..00	VSD	Ventricular septal defect	Yes
G83..00	VV	Varicose veins of the legs	Yes
9R5..00	WL	Patient on waiting list	No

Abbreviations used for Read selection

An abbreviation such as COPAIN takes you direct to *1D13*. *C/O: a pain*, BACKNAD will take you *2H81*. *O/E - spine NAD*. These frequently use the combination of a Prefix and then a location or symptom. Negative examination findings are all coded with a prefix of 0 (zero).

Read CODE	ABBREVIATION	DESCRIPTION
12D2.00	FHASTHMA	FH: Asthma
13HT100	STRESSHOME	Stress at home
13JM.13	STRESSWORK	Stress at work
13M7.00	DEATHFATHE	Death of father
13V9.00	RIGHT	Right handed
13VA.00	LEFT	Left handed
1476.00	PMHBELLS	H/O: Bell's palsy
14Z1.00	PHNIL	No relevant past medical hist.
16...13	MULTSYMPT	Multiple symptoms
1611.00	APPETN	Appetite normal
1621.00	WTISQ	Weight steady
1644.00	XSTHIRST	Excessive thirst
16A1.00	NECKOK	No stiff neck
16C1.00	BACKNIL	No backache
1712.00	SPUTNIL	Dry cough
1731.00	PNDNIL	No breathlessness
1731.00	SOBNAD	No breathlessness
1732.00	SOBMOD	Breathless - moderate exertion
1733.00	SOBMILD	Breathless - mild exertion
1735.00	SOBLYING	Breathless - lying flat
1831.00	SOANIL	No oedema present
1929.00	SORETONGUE	Tongue symptoms
1969.00	ABDOPAIN	Abdominal pain
1972.00	EPGS	Epigastric pain
1A11.00	MICTOK	Micturition frequency normal
1A51.00	DYSNIL	No genitourinary pain
1A51.00	UGSNAD	No genitourinary pain
1A7..00	VAGD	Vaginal discharge symptom
1A71.00	VDNIL	Vaginal discharge absent
1A8..00	LUMPBREAST	Breast lump symptom

1B1H.00	FRIT	Frightened
1B75.00	LOSSSIGHT	Loss of vision
1C32.00	EAR1	Unilateral earache
1C33.00	EAR2	Bilateral earache
1C8..11	NASALSYMP	Nasal symptoms
1C9..00	SRT	Sore throat symptom
1D13.00	COPAIN	C/O: a pain
1D14.00	CORASH	C/O: a rash
1Y...00	WLL	Patient feels well
211..00	NEX	Patient not examined
2126.00	IMPR	Patient's condition improved
2126.00	IMPRV	Patient's condition improved
22A..00	WT	O/E - weight
22E1.00	EYENAD	O/E - eyes - NAD
2315.00	RSNAD	Resp. system examined - NAD
2415.00	CVSNAD	CVS examined - NAD
24E..00	PPR	O/E - peripheral pulses R.-leg
24F..00	PPL	O/E - peripheral pulses L.leg
2516.00	ABDONAD	Abdomen examined - NAD
2571.00	FOETNIL	O/E - breath smell normal
25E1.00	REBOUNDNIL	O/E - no rebound tenderness
25G1.00	LIVERNIL	O/E - liver not palpable
25Q1.00	PRNAD	O/E - rectal examination - NAD
25S1.00	BSNAD	O/E - bowel sounds normal
25S2.00	BSNIL	O/E - bowel sounds absent
2681.00	VENAD	O/E - bi-manual VE - NAD
2B6..00	RTEYE	O/E - visual acuity R-eye
2B6..00	VAR	O/E - visual acuity R-eye
2B7..00	VAL	O/E - visual acuity L-eye
2BI1.00	PERLA	O/E - pupil reactions normal
2C31.00	LNNAD	O/E - no lymphadenopathy
2C32.00	LNCERV	O/E -cervical lymphadenopathy
2C35.00	AXLN	O/E -axillary lymphadenopathy
2D12.00	ENTNAD	ENT examination - NAD
2D15.00	THRNAD	Throat examination - normal
2D95.00	REDTM	O/E - tympanic membrane red

2DA3.00	TENDFRONT	O/E - frontal sinus tenderness
2E31.00	TEMPNIL	O/E - temperature normal
2F12.00	RASHNIL	O/E - skin examined - NAD
2F12.00	SKINNAD	O/E - skin examined - NAD
2H21.00	JOINTNAD	O/E - no joint abnormality
2H29.00	KNEEABN	O/E - knee joint abnormal
2H31.00	SWNIL	O/E - joint not swollen
2H43.00	ROMRED	O/E - reduced joint movement
2H81.00	BACKNAD	O/E - spine - NAD
2H84.00	SPINEABN	O/E - lumbar spine abnormal
2H91.00	SLROK	O/E - SLR normal - left=right
3128.00	FNDI	Fundoscopy
3133.12	AUDIONAD	Audiogram normal
3139.00	TYMPNAD	Tympanogram normal
417..00	LABAWAITED	Lab. test result not back yet
418..00	LABNAD	Lab. test result normal
418..00	TESTNAD	Lab. test result normal
419..00	LABABN	Lab. test result abnormal
41C2.00	LABPHONE	Test result to pat.by 'phone
423..11	HB	Hb estimation
43A2.00	PBPOS	Inf mononucleos test positive
44P..00	CX	Serum cholesterol
4615.00	MSUREQ	MSU sent to lab.
4652.00	EMUNEG	Urine pregnancy test negative
4654.00	EMUPOS	Urine pregnancy test positive
4664.00	GLUC1	Urine glucose test = +
4K13.00	HISTNAD	Histology normal
524..00	SXR	Plain X-ray skull
5692.00	MRINAD	Nuclear magn reson normal
585A.00	USSLIVER	U-S liver scan
6124.00	VASECTPART	Partner had vasectomy
6151.00	IUCDFIT	IUD fitted
62...00	PRGNT	Patient pregnant
6412.00	BF10D	Breast fed at 10 days
6422.00	BF6W	Breast fed at 6 weeks
65PC.11	RISKWEIL	Weil's disease risk exposure

65V3.00	NOTIFJAUND	Notification of inf. jaundice
65W4.00	REQHEPA	Requires a hepatitis A vaccination
668A.00	VISIONOK	Normal vision
6791.00	ADVCIGS	Health ed. - smoking
6819.00	CHCK	Screening - NAD
6819.00	SCREENNAD	Screening - NAD
68R2.00	NEWDONE	New patient screen done
6A...00	RV	Patient reviewed
7530600	TANDA	Tonsillectomy and adenoidectomy
771J.11	CLNSC	Diagnostic colonoscopy
7A68.00	INJVV	Injection into varicose vein of leg
7G22.12	REMSUT	Removal of suture of skin
7G32400	EXCNAIL	Total excision of nail
7H11111	OPMESH	Primary mesh repair of inguinal hernia
7J48H00	MANIPLUMB	Manipulation of lumbar spine
7K1PD00	KWIRE	Removal of Kirschner wire internal bone fixator
7K6Z000	ASPJT	Aspiration of joint
7K6Z200	INJTT	Injection of therapeutic substance into joint
7L18.00	IMINJ	Intramuscular injection
8643.00	TENS	Transcutaneous nerve stimulant
8762.00	STEAM	Inhalation therapy
89Z..00	POSTOP	Pre/post-operative proced.NOS
8B3A200	MEDRED	Medication decreased
8B3B.00	SELFRX	Patient on self-medication
8C19.00	DNBATHING	Nursing care - bathing patient
8C90.00	OKPAT	Patient reassured
8CA3.00	OTC	Patient advised re OTC medicat
8CA4100	DIETDM	Pt advised re diabetic diet
8E77.00	PHYSPELVIC	Pelvic floor exercises
8H29.00	ADMITENT	Admit ENT emergency
8H7B.00	REFCPN	Refer to community psych.nurse
8HE3.00	DISCHDC	Discharged from day-case care
8HG..00	DIEDHOSP	Died in hospital
8I52.00	REFUSEMEAL	Refuses meals on wheels
8M00.00	REQVASECT	Vasectomy requested
9221.00	LEAVINGYGP	Patient says leaving list

9346.00	CHR	Total notes on computer
9879.00	MSINCIS	Minor surgery done - incision
9DC..00	SC1	SC1 - self certificate admin.
9E51.00	LIFECOMPL	Life ass.exam.completed
9EW..00	INSRECEIV	Insurance form received
9N1b.00	SBCHEST	Seen in chest clinic
9N36.00	LETTFROM	Letter from specialist
9N36.00	LETTREC	Letter from specialist
9NC3.00	LETTERPAT	Letter sent to patient
9NC3.00	LETTOPAT	Letter sent to patient
9ND1.00	HAEMREC	Haematology result received
9ND3.00	LABREC	Microbiology report received
9ND4.00	XRREC	X-ray report received
9ND5.00	LETREC	Consultant letter from:
9ND6.00	COMREC	Communication from:
9ND8.00	IPREC	I/patient disch summary rec'vd
9NDA.00	RECSSD	Report received from social services
9NFA.00	DNV	District nurse visit
9NG..00	LETTAWAIT	Letter/report awaited
9OW4.00	NEWLET1	New patient screen 1st letter
9R52.00	WLOPD	Patient awaiting OPD appt.
A79z.00	VIRILL	Viral infection NOS
B34..00	NGBREAST	Malignant neoplasm of female breast
F26..00	MGRNE	Migraine
F46..00	CATRCT	Cataract
F4C0.00	CNJCT	Acute conjunctivitis
F4C0.00	INFEYE	Acute conjunctivitis
F501.00	OEX	Infective otitis externa
F504.11	WX	Wax in ear
F583.00	TNT	Tinnitus
G33..00	ANGNA	Angina pectoris
H170.11	HYP	Hay fever - pollens
H33..00	ASMA	Asthma
J2...00	APPX	Appendicitis and other disorders of the appendix
M111.00	ECZM	Atopic dermatitis/eczema
N053512	OAHIP	Hip osteoarthritis NOS

N073.00	LOOSEKNEE	Loose body in knee
N211z11	ARC	Painful arc syndrome
N215700	TRB	Trochanteric bursitis
N217300	ACB	Achilles bursitis
N217400	ACT	Achilles tendinitis
N224500	GANGWRIST	Ganglion of wrist
N245.11	PAINANK	Ankle pain
R022200	COLUMP	[D]Lump, localized and superficial
R065A00	MSS	[D]Musculoskeletal chest pain
S342000	FRACTANKL	Closed fracture ankle, lateral malleolus, low
S41..00	DISLOCSH	Dislocation or subluxation of shoulder
SA10000	LACKNEE	Open wound of knee
SD3y000	INJURYELBO	Superficial injury of elbow NOS
SE42000	BRUISEFOOT	Contusion, foot
SG0..00	FBEYE	Foreign body on external eye
TC...11	FLL	Fall - accidental
ZV65411	XPL	[V]Explanation of medication

Useful Read Terminology

- Fracture.

A/R – Adverse reaction

[D] - WORKING DIAGNOSIS - Read Chapter R - These codes are used when a clinician has a working diagnosis which may later be identified as a defined disease entity. For example "dizziness" and "headache" are symptoms which may become a firm diagnosis after investigation but are often used as a "diagnosis" when it is not possible to be more precise.

EC – Elsewhere classified – This abbreviation refers to an entity that is classified elsewhere in the codes. It is usually the underlying cause of the particular disorder and is a hint that you may wish to code this cause as a second code to make it more specific.

FB – Foreign body

FH – Family History; FH * - Family History of malignancy

HFQ – However further qualified

H/O – History of

[M] - Morphology of neoplasms (e.g. Transitional Cell Ca Bladder) - Read Chapter B. Terms that contain this symbol are for recording the cell type of the neoplasm and correspond to the morphology chapters in the ICD classifications.

NEC - NOT ELSEWHERE CLASSIFIED – This means that specific varieties of this entity appear elsewhere in the classification. These will usually be shown on the picking list after a term key search. If none of the other matches the concept to be coded, use this code.

NFQ - NOT FURTHER QUALIFIED

NOC – Not otherwise classified

NOS - NOT OTHERWISE SPECIFIED - This option appears at the end of a list of entities at a given level. It should be selected if not enough detail is known about the data being recorded to choose one of the more specific options. It means the same as recording the code one level higher, but may be useful if a more detailed cross-reference code needs to be generated. For example, the term "asthma" alone means the same as "asthma NOS".

O/E – On examination

OS – Otherwise specified (codes end with y) - This option indicates that enough is known to say categorically that it is not one of the other options at this level.

PH – Personal history of; PH* - Personal history of malignancy

[Q] Qualifier (Read 3 moves away from rigid hierarchical relationship concept and allows cross-linking between codes. - Read Chapter Z.

[SO] - SITE OF – Occurs in the sub-chapter &N... Codes with this included equate to chapter Z in OPCS4 and provide a way of coding the site of operation as a subsidiary code.

[V] - Other factors affecting health – Occurs in sub-chapter ZV...Read Chapter Z. These codes correspond to the ICD10 chapter that records "supplementary factors influencing health status or contact with health services other than for illness" (for example "normal Pregnancy" ZV22 may affect the contact or health status other than illness).

[X] Derived from the ICD-10 updates. These use contemporary concepts and it is advised that these codes should be used for mental health and behavioural disorders (Eu replaced Chapter E) and for causes of morbidity/mortality (U replacing chapter T).

Changes and Updates to the Read Dictionary

Each time that you update your Read dictionary (issued at six monthly intervals), have you ever wondered what has been added to your dictionary?

InPS provide a small text file indicating the additions, amendments (and deletions, though these are rare) to the Read code list, including new Terms and new Keywords, that are added in each update.

This file is included on each update CD, for those that receive dictionary updates via CD. It is named "chgrep QXXXX.txt", where XXXX is of the format 01 or 03 (meaning March or September release, respectively), followed by 05 or 06, (meaning 2005 or 2006).

Requesting new Read codes

There is a channel via the InPS website home page <http://www.inps.co.uk/>.

Useful clinical Read codes

To select from Read, either use # followed by the code, eg, #B11, or type in a Read term keyword - these are in italics below. Using the Easy-Read guideline is also a quick way of finding relevant Read terms..

The following lists give the Read code, followed by the Read term. Italicised in brackets are keywords for these terms. To see what keywords a term has, tick the **Display All Keywords** box on the back Read dictionary screen when in keyword mode, or right click on a Read term to view and add new keywords.

The new GMS Contract specifies the Read codes acceptable for Quality Indicators for audit. These Read codes are in **bold**. This is not a definitive list and for a full list of QOF acceptable codes, visit the InPS website www.inps.co.uk via the nGMS contract link on the Home page.

Generalised Symptoms

1612 Appetite Loss (*loss*)
1625 Abnormal Weight Loss (*loss, weight*)
16C Backache (*backache*)
16B Bruising (*bruising*)
166 Sweating (*sweating*)
168 Fatigue (*fatigue*)
165 Temperature (*temperatur*)
16C5 Low back pain (*lbp, low*)
1684 Malaise / Lethargy
16D1 Recurrent Falls (*recurrent*)
1654 Rigours (*rigor*)
169 Gland symptoms (*gland*)
16C7 Upper back pain (*ache, back, upper*)
1675 Yellow / Jaundiced symptom (*yellow, jaundiced*)
9D Certificates (*certificat*)
9E Examinations / Reports

Cancer Read terms

B0 Malignant neoplasm of lip, oral cavity and pharynx
B1 Malignant neoplasm of digestive organs and peritoneum

B11 Malignant neoplasm of stomach (*stomach*)
B13 Malignant neoplasm of colon (*colon*)
B14 Malignant neoplasm of rectum, rectosigmoid junction and anus (*anus*)
B17 Malignant neoplasm of pancreas (*pancreas*)
B2 Malig neop of respiratory trace and intrathoracic organs
B22 Malignant neoplasm of trachea, bronchus and lung (*lung*)
B30 Malignant neoplasm of bone and articular cartilage
B31 Malignant neoplasm of connective and other soft tissue
B32 Malignant Melanoma of skin (*malignant, melanoma, skin*)
B33 Other malignant neoplasm of skin (*skin*) (synonym - Basal cell carcinoma)
B34 Malignant neoplasm of female breast (*breast*)
B35 Malignant neoplasm of male breast
B3y Malig neop of bone, connective tissue, skin and breast OS
B3z Malignant melanoma of skin NOS
B4 Malignant neoplasm of genitourinary organ
B440 Malignant neoplasm of ovary (*ovary*)

B41 Malignant neoplasm of cervix (uteri) (cervix)

B43 Malignant neoplasm of body of uterus (body, uterus)

B44 Malignant neoplasm of ovary and other uterine adnexa (adnexa, uterine)

B46 Malignant neoplasm of prostate (prostate)

B47 Malignant neoplasm of testis (testis)

B5 Malignant neoplasm of other and unspecified sites

B6 Malignant neoplasm of lymphatic and haemopoietic tissue

B61 Hodgkin's Disease (hodgkin)

B63 Multiple Myeloma

B64 Lymphoid Leukaemia (leukaemia, lymphoid)

B65 Myeloid Leukaemia (leukaemia, myeloid)

Byu0 [X] Malignant neoplasm of lip, oral cavity and pharynx

Byu1 [X] Malignant neoplasm of digestive organs

Byu2 [X] Malignant neoplasm of respiratory and intrathoracic organ

Byu3 [X] Malignant neoplasm of bone and articular cartilage

Byu4 [X] Melanoma and other malignant neoplasms of skin

Byu41 [X] Malignant melanoma of skin, unspecified

Byu5 [X] Malignant neoplasm of mesothelial and soft tissue

Byu6 [X] Malignant neoplasm of breast

Byu7 [X] Malignant neoplasm of female genital organs

Byu8 [X] Malignant neoplasm of male genital organs

Byu9 [X] Malignant neoplasm of urinary tract

ByuA [X] Malignant neoplasm of eye, brain and other parts of central nervous system

ByuB [X] Malignant neoplasm of thyroid and other endocrine glands

ByuC [X] Malignant neoplasm of ill-defined, secondary and unspecified sites

ByuD [X] Malignant neoplasms of lymphoid, haematopoietic and related tissues

ByuE [X] Malignant neoplasms/independent (primary) multiple sites

9h81. Excepted from cancer quality indicators: Patient unsuitable

9h82. Excepted from cancer quality indicators: Informed dissent

Cardio-vascular related Read Terms

Cardiovascular Symptoms, Examination and Investigations Read terms

1269 Family history of hypercholesterolaemia (*familial*)

12C1 FH: Hypertension (*hypertensi*)

12C2 FH: Ischaemic heart dis. <60 (*IHD, ischaemic*)

12C4 FH: CVA/Stroke

12C5 FH: Myocardial infarction (*infarction, myocardial*)

12C6 FH: Atherosclerosis (*atheroscle*)

12C7 FH: Transient ischaemic attack (*ischaemic, transient*)

137 Tobacco consumption (see Smoking Read Terms on page 57)

1381 Exercise physically impossible

1382 Avoid even trivial exercise

1383 Enjoys light exercise

13p Smoking cessation milestones

Smoking cessation advice (see Smoking Read Terms on page 57)

14A5 H/O: angina pectoris (*angina*)

14A6 H/O: heart failure

14AB H/O: TIA (TIA)

14LK H/O: aspirin allergy

14LL H/O: betablocker allergy

14LM H/O: angiotensin converting enzyme inhibitor allergy

14LN H/O: angiotensin II receptor agonist allergy

14LJ H/O: influenza vaccine allergy
14LP H/O: warfarin allergy
14LQ H/O: clopidogrel allergy
 181 Palpitations (*palpitatio, fluttering*)
 182 Chest Pain (*chest, pain*)
 183 Oedema (*oedema*)
 1841 Prominent Leg Veins (*leg*)
 186 Cold Extremities (*cold, extremitie*)
21261 Hypertension resolved
 2426 O/E - pulse rate tachycardia
 2431 O/E - pulse rhythm regular
246 O/E - blood pressure reading
2461-246G O/E - BP reading...
 246H O/E - Arterial pressure index normal
 246I O/E - Arterial pressure index abnormal
246J O/E - BP reading: no postural drop
 246K O/E Target systolic blood pressure
 246L Target diastolic blood pressure
 246M White coat hypertension
246N-246Z O/E - blood pressure reading NOS
 2I17 O/E - phlebitis (*phlebitis*)
 32 Electrocardiography (*electrocar, ECG*)
3213 Exercise ECG
33B9 Exercise tolerance test
33BD Impaired left ventricular function
 42QE International normalised ratio (*INR, normalised*)
44OE Plasma total cholesterol level
 44O4 Serum lipids high
44P.. Serum Cholesterol
44P1 Serum Cholesterol normal
44P2 Serum Cholesterol borderline
44P3 Serum Cholesterol raised
44P4 Serum Cholesterol very high
44PH Total cholesterol measurement
 4678 Proteinuria (*proteinuri*)
567.-5673 CAT scan
5675 CAT scan - brain
567C CAT scan brain - abnormal

569.-5693 Nuclear magnetic resonance
5694 Magnetic resonance imaging of brain abnormal
5853 U-S heart scan
58531 Echocardiogram abnormal
585f Echocardiogram shows left ventricular systolic dysfunction
585g Echocardiogram shows left ventricular diastolic dysfunction
 5858 Doppler studies (*doppler, studies*)
 662 Cardiac disease monitoring (*cardiac*)
 662.12 Hypertension monitoring
 6623 Pre-Treatment BP reading
 662C O/E - check high BP
 662K Angina control (*angina*)
 662M Stroke monitoring
 662T Congestive heart failure monitoring
 662e Stroke/CVA annual review

Cardiovascular Diagnoses Read terms

C320 Pure hypercholesterolaemia (*hyperchole*)
 C320.11 Familial hypercholesterolaemia
 C324 Hyperlipidaemia NOS (*hyperlipid*)
 G0 Acute rheumatic fever (*acute, fever, rf, rheumatic, rhf*)
 G1 Chronic rheumatic heart disease (*chronic, heart, rheumatic*)
G1yz1 Rheumatic left ventricular failure
G2 Hypertensive Disease (*hypert, hypertensi*)
G20 Essential Hypertension (*essential, hypertensi*)
G24 Secondary hypertension
G2y Other specified hypertensive disease
G2z Hypertensive disease NOS
G3 Ischaemic Heart Disease (*heart, ischaemic*)
G30 Acute Myocardial Infarction (*MI, myocardial, infarction, coronary*)
G30..11 Heart attack (*attack*)
G31 Other acute and subacute ischaemic heart disease

- G3111 Unstable angina (*unstable, angina*)**
- G33 Angina Pectoris (*angina, pectoris*)**
- G34 Other chronic ischaemic heart disease**
- G340 Coronary atherosclerosis**
- G341 Aneurysm of heart
- G342 Atherosclerotic cardiovascular disease**
- G343 Ischaemic cardiomyopathy**
- G344 Silent myocardial ischaemia**
- G34y Other specific chronic ischaemic heart disease**
- G34z Other chronic ischaemic hearts disease NOS**
- G35 Subsequent myocardial infarction**
- G36 Certain current complication follow acute MI**
- G37 Cardiac syndrome X
- G38 Postoperative myocardial infarction**
- G3y Other specified ischaemic heart disease**
- G3z Ischaemic heart disease NOS**
- G401 Pulmonary embolism (*embolism, pulmonary, PE*)
- G41 Chronic pulmonary heart disease
- G5 Other forms of heart disease
- G55 Cardiomyopathy (*cardiomyop*)
- G551 Hypertrophic obstructive cardiomyopathy (*HOCM, hypertroph*)
- G57 Cardiac dysrhythmias (*cardiac, dysrhythmi*)
- G570 Paroxysmal supraventricular tachycardia (*paroxysmal, supraventr, tachycardi*)
- G5730 Atrial Fibrillation (*AF, fibrillati*)
- G5731 Atrial flutter (*AF, flutter*)
- G5yy9 Left ventricular systolic dysfunction**
- G5yyA Left ventricular diastolic dysfunction**
- G5y3411 Left ventricular hypertrophy (*left, LVH*)
- G58 Heart Failure (*failure, heart*)**
- G580 Congestive heart failure (*CHF, congestive, failure, heart*)
- G581 Left ventricular failure (*failure, left, lvf, ventricula*)
- G581.13 Impaired left ventricular function
- G6 Cerebrovascular disease (*cerebrovas*)
- G60 Subarachnoid haemorrhage (*haemorrhag, sah, subarachno*)
- G61 Stroke due to intracerebral haemorrhage (*haemorrhag, intracereb*)**
- G63y Other precerebral arterial occlusion**
- G63y0 Cerebral infarct due to thrombosis of precerebral arteries**
- G63y1 Cerebral infarction due to embolism of precerebral arteries**
- G64 Cerebral arterial occlusion (*arterial, cerebral, occlusion*)**
- G640 Cerebral thrombosis (*thrombosis*)**
- G641 Cerebral embolism (*embolism*)**
- G65 Transient Cerebral Ischaemia (*TIA, cerebral, ischaemia, transient*)**
- G65..12 Transient ischaemic attack (*TIA*)**
- G65-654 (TIA)**
- G65y-G65zz (TIA)**
- G66 Stroke and cerebrovascular accident unspecified (*CVA*)**
- G6W Cereb infarct due unsp occlus/stenos precerebr arteries**
- G6X Cerebrl infarctn due/unspcf occlusn or sten/cerebrl artrrs**
- G6760 Cereb infarct due cerebral venous thrombosis, nonpyogenic**
- G700 Aortic atherosclerosis (*aortic*)
- G71 Aortic Aneurysm (*aneurysm, aortic*)
- G72 Other aneurysm (*aneurysm*)
- G730 Raynaud's syndrome (*raynaud*)
- G731 Thromboangiitis obliterans (*thrombo, obliterans*)
- G73z Peripheral vascular disease NOS (*pvd*)
- G73z0 Intermittent claudication (*claudicati, ic, intermitte*)
- G80 Phlebitis / Thrombophlebitis (*phlebitis, thrombophl*)
- G800 Superficial vessel phlebitis and/or thrombophlebitis (*leg, superficiala*)
- G801.11 Deep Vein Thrombosis (*DVT, thrombosis*)
- G81 Portal vein thrombosis (*portal, thrombosis, vein*)

G82 Other venous embolism and thrombosis
 G83 Varicose Veins of Leg (*VV, varicose, vein*)
 L12 Hypertension complicating pregnancy/childbirth (*BP, high, hypertensi, obstetric*)
 L413 Antenatal deep vein thrombosis (*antenatal, deep, thrombosis, vein*)
 L414 Postnatal deep vein thrombosis (*deep, postnatal, thrombosis, vein*)
 M271 Non-pressure ulcer lower limb
 P5..12 Congenital heart disease, septal and bulbar anomalies (*CHD*)
 R023 [D] Oedema (*oedema*)
 R065 [D] Chest pain (*chest, pain*)
 R1103 [D] Microalbuminuria (*microalbum*)
R1320 [D] Echocardiogram abnormal
R1322 [D] Ultrasound cardiogram abnormal

Cardio-vascular Referral, Intervention, Management

65E Influenza vaccination
67A3 Pregnancy smoking advice
67I8 Advice about taking aspirin
68NE No consent - influenza imm
 79 Heart operations (*heart*)
 791 Valves of heart and adjacent structures operations (*valve*)
 792 Coronary artery operation (*artery, coronary*)
79352 Transoesophageal echocardiography
 7A Artery and vein operations (*artery, vein*)
8BL0. Patient on maximal tolerated antihypertensive therapy
8BL1 Patient on maximal tolerated lipid lowering therapy
8B3T Over the counter aspirin therapy (aspirin)
8B63 Salicylate prophylaxis (salicylate)
 8C21 Promote healing-positive press
8H44 Cardiological referral (cardiologi)

8HQ3 Refer for NMR scanning
8HQ4 Refer for CAT scanning
8HQ7 Referral for echocardiography
8HRA Referral for exercise ECG
8HTJ Referral to rapid access chest pain clinic
8HVJ Private referral to cardiologist
8I24 Aspirin prophylaxis contra-indicated
8I25 Warfarin contraindicated
8I26 Beta blocker contraindicated
8I28 Angiotensin converting enzyme inhibitors contraindicated
8I2F Influenza vaccination contraindicated
8I2H Angiotensin II receptor antagonists contraindicated
8I2K Clopidogrel contraindicated
8I36 Beta blocker therapy refused
8I38 Aspirin prophylaxis refused
8I3D Angiotensin converting enzyme inhibitor declined
8I3E Warfarin declined
8I3P Angiotensin II receptor antagonist declined
8I3R Clopidogrel declined
8I62 Beta blocker not indicated
8I64 Angiotensin converting enzyme inhibitor not indicated
8I65 Warfarin not indicated
8I66 Aspirin not indicated
8I6B Clopidogrel not indicated
8I6C Angiotensin II receptor antagonist not indicated
8I6D Influenza vaccination not indicated
8I70 Aspirin not tolerated
8I71 Warfarin not tolerated
8I72 Clopidogrel not tolerated
8I73 Beta blocker not tolerated
8I74 Angiotensin converting enzyme inhibitor not tolerated

8I75 Angiotensin II receptor antagonist not tolerated
 9N03 Seen in hypertension clinic (*hypertensi, seen*)
9h01. Excepted from CHD quality indicators: Patient unsuitable
9h02. Excepted from CHD quality indicators: Informed dissent
9h11. Excepted from LVD quality indicators: Patient unsuitable
9h12. Excepted from LVD quality indicators: Informed dissent
9h21. Excepted from Stroke quality indicators: Patient unsuitable
9h22. Excepted from Stroke quality indicators: Informed dissent
9h31. Excepted from Hypertension quality indicators: Patient unsuitable
9h32. Excepted from Hypertension quality indicators: Informed dissent
 9N0f Seen in rapid access chest pain clinic
 9N1P Seen in cardiac clinic (*cardiac, clinic, seen*)
9OX5 Influenza vaccination declined
R1320 [D] Echocardiogram abnormal
R1322 [D] Ultrasound cardiogram abnormal
TJ421 Adverse reaction to warfarin sodium
TJ53 Adverse reaction to salicylates (*salicylate*)
TJC6 Adverse reaction to betablockers
 TJC7 Adverse reaction to other antihypertensives
U6042 [X] Anticoagulant causing adverse effects in therapeutic use
U6048 [X] Clopidogrel causing adverse effects in therapeutic use
U6051 [X] Salicylates causing adverse effects in therapeutic use
U60B7 [X] Beta-adrenorecep antag caus advers eff in their use
U60C4 [X] Angiotensin-convert-enz inhib caus advers eff therap use

U60CB [X] Angiotensin 2 receptor antagon adverse effect therap use
U60K4 [X] Influenza vaccine causing adverse effects in therapeutic use
ZV048 [V] Influenza vaccination
ZV148 [V] Personal history of aspirin allergy
ZV14A [V] Personal history of warfarin allergy
ZV14B [V] Personal history of clopidogrel allergy
ZV14C [V] Personal history of betablocker allergy
ZV14D [V] Personal history of angiotensin-converting-enzyme inhibitor allergy
ZV14E [V] Personal history of angiotensin II receptor antagonist allergy
ZV14F [V] Personal history of influenza vaccine allergy
 ZV45 [V] Other postsurgical states

Endocrine, Diabetes, Metabolic Disorder Read terms

14LJ H/O: influenza vaccine allergy
 14LM H/O: angiotensin converting enzyme inhibitor allergy
 14LN H/O: angiotensin II receptor agonist allergy
 14P3 H/O: insulin therapy (*insulin*)
21263 Diabetes resolved
246 O/E - blood pressure reading
2461 - 246G O/E - BP reading...
246J O/E - BP reading: no postural drop
246N-246Z O/E - blood pressure reading NOS
24E1-24ED
24E O/E - peripheral pulses R.-leg
24F1 - 24FD
24F O/E - peripheral pulses L.leg

2G5E-2G5L (diabetic foot at risk)
29B1 O/E - tactile sensation normal
29B2 O/E - anaesthesia present
29B3 O/E - hypoaesthesia present
29B7-29BC 10g monofilament sensation...
29H O/E - vibration sense
29H1- 29HB (vibration sense)
2BB O/E - retinal inspection
311A Monofilament foot sensation test
3128 Fundoscopy (*fundoscopy*)
3129 Eye fundus photography
312E Direct fundoscopy following mydriatic
312F Camera fundoscopy
312G Indirect fundoscopy following mydriatic
42c HbA1 - diabetic control
42W Hb.A1C - diabetic control (*HBA1C*)
42W4 HbA1C level (DCCT aligned)
442 Thyroid hormone tests
442A TSH - thyroid stim. hormone
442K- 442O 30/60/90/120/150 minute plasma TSH level
442P-442T 30/60/90/120/150 minute serum TSH level
442W Serum TSH level
442X Plasma TSH level
442e Blood spot TSH level
44J3 Serum creatinine
44OE Plasma total cholesterol level
44P Serum cholesterol (*cholestero*)
44P1 Serum Cholesterol normal
44P2 Serum Cholesterol borderline
44P3 Serum Cholesterol raised
44P4 Serum Cholesterol very high
44PH Total cholesterol measurement
44TB Haemoglobin A1c level
44TC Haemoglobin A1 level
44TD Fructosamine level
44Z1 Serum fructosamine
 4673-4677 Urine protein test ...
4678 Proteinuria
467A 24 hour urine protein output
46N5 24 urine protein excretion test
46N6 24 hour urine albumin output
46N7 Urine protein/creatinine index
 46TC Urine albumin:creatinine ratio
46W Urine microalbumin (*microalbum*)
 46W0 Urine microalbumin positive (*positive*)
585V-5853 (L/R dorsalis pedis/posterior tibial pressure/ABPI)
58C1 Retinal photography
 5A11 Thyroid gland ablat - irradiat
 5A12 Thyroid tumour / metast irradiat
 66A Diabetic monitoring (*diabetic*)
 66A3 Diabetic on diet only
 66A4 Diabetic on oral treatment
 66A5 Diabetic on insulin
 66Ac Diabetic periph neurop screen
66AD Fundoscopy - diabetic check
 66AE Feet examination
 66AF Attends outpatients
 66AP Diabetes: practice programme (*practice, programme*)
 66AQ Diabetes: shared care programme (*shared*)
 66AR Diabetes Management plan given (*diabetes, management, plan*)
 66B Thyroid disease monitoring (*thyroid*)
 66D Endocrine disorder monitoring (*endocrine*)
 6872 Diabetes mellitus screen (*diabetes*)
68A7 Diabetic retinopathy screening
68A8 Digital retinal screening
 711 Thyroid gland and parathyroid gland operations
 8B64 HRT (*hormone, hrt*)
8BL0 Patients on maximal antihypertensive therapy
8BL1 Patient on maximal tolerated lipid lowering therapy
 8H7f Referral to diabetic nurse (*diabetes*)
8H7n Referral to retinal screener

8I28 Angiotensin converting enzyme inhibitors contraindicated

8I2H Angiotensin II receptor antagonists contraindicated

8I3D Angiotensin converting enzyme inhibitor declined

8I3P Angiotensin II receptor antagonist declined

8I64 Angiotensin converting enzyme inhibitor not indicated

8I6C Angiotensin II receptor antagonist not indicated

8I6D Influenza vaccination not indicated

8I74 Angiotensin converting enzyme inhibitor not tolerated

8I75 Angiotensin II receptor antagonist not tolerated

9N1Q Seen in diabetic clinic (*clinic*)

9N1v Seen in diabetic eye clinic

9N2U Seen by optician

9N2e Seen by ophthalmologist

9N2f Seen by retinal screener

9NM0 Attending diabetes clinic (*diabetes*)

9OL Diabetes monitoring admin. (*diabetes*)

9h41. Excepted from Diabetes quality indicators: Patient unsuitable

9h42. Excepted from Diabetes quality indicators: Informed dissent

9h71. Excepted from hypothyroidism quality indicators: Patient unsuitable

9h72. Excepted from hypothyroidism quality indicators: Informed dissent

ByuB [X] Malignant neoplasm of thyroid and other endocrine glands

C02 Thyrotoxicosis (*thyrotoxic*)

C03 Congenital hypothyroidism

C04 Acquired hypothyroidism (*acquired, hypothyroi*)

C04.11 Myxoedema (*myxoedema*)

C10 Diabetes mellitus (*diabetes, mellitus, DM*)

C106 Diabetes mellitus with neuropathy (*diabetes, neurologic*)

C106 Diabetes mellitus with neuropathy (*diabetes, neurologic*)

C108 Insulin dependent diabetes (*dependent, insulin*)

C108.12 Type 1 diabetes mellitus (*type*)

C109 Non-insulin dependent diabetes (*niddm*)

C109.12 Type 2 diabetes mellitus (*type*)

C10EK Type 1 diabetes mellitus with persistent proteinuria

C10EL Type 1 diabetes mellitus with persistent microalbuminuria

C10FL Type 2 diabetes mellitus with persistent proteinuria

C10FM Type 2 diabetes mellitus with persistent microalbuminuria

K190X Persistent proteinuria, unspecified

Kyu5G [X] Persistent proteinuria, unspecified

N330 Osteoporosis (*osteoporos*)

R110 [D] Proteinuria

R1100 [D] Albuminuria

R110z [D] Proteinuria NOS

R1103 [D] Microalbuminuria

U60C4 [X] Angiotensin-convert-enz inhib caus advers eff therap use

U60CB [X] Angiotensin 2 receptor antagon adverse effect therap use

U60K4 [X] Influenza vaccine causing adverse effects in therapeutic use

ZV14D [V] Personal history of angiotensin-converting-enzyme inhibitor allergy

ZV14E [V] Personal history of angiotensin II receptor antagonist allergy

ZV14F [V] Personal history of influenza vaccine allergy

ENT Read terms

ENT Symptoms and O/E Read terms

14B1 H/O: hay fever (*hay*)

1C1 Hearing symptoms (*hearing*)

1C2 Tinnitus symptoms (*tinnitus*)

1C3 Earache symptoms (*earache*)
 1C4 Ear discharge (*ear*)
 1C6 Nose bleed symptoms (*bleed, nose*)
 1C7 Snoring symptoms (*snoring*)
 1C8 Nasal symptoms OS
 1C9 Sore Throat (*sore, throat*)
 1CA Hoarseness (*hoarseness*)
 1CB Throat symptoms NOS (*throat*)
 1CC Blocked sinuses (*blocked, sinuses*)
 2D32 Foreign bodies in nose (*FB, foreign, nose*)
 2D6 O/E - discharge from ear (*discharge, ear*)
 2D82 O/E - wax in auditory canal
 2D7 O/E - Painful ear (*ear, painful*)
 2D83 Foreign bodies in ear (on examination) (*body, ear, FB, foreign*)
 2D9 O/E - tympanic membrane (*membrane, tympanic*)

ENT Interventions and Diagnoses Read terms

66L ENT disease monitoring (*ENT*)
 7313 Drainage of middle ear (*drainage, middle*)
 7530.11 Tonsillectomy (*tonsillect*)
 75306 Tonsillectomy and adenoidectomy (*adenoidect, tonsillect*)
 8D2 Auditory aid
 A340 Streptococcal sore throat (*sore, streptococ, throat*)
 A53x0 Herpes zoster otitis externa (*externa, otitis*)
 A75..11 Glandular fever (*fever, gf, glandular*)

B0 Malignant neoplasm of lip, oral cavity and pharynx

Byu0 [X] Malignant neoplasm of lip, oral cavity and pharynx

F5 Diseases of the ear and mastoid processes
 F501 Infective otitis externa (*infective, externa, otitis*)
 F502 Other otitis externa (*externa, otitis*)
 F504 Impacted cerumen (wax in ear) (*cerumen*)

F51 Nonsuppurative otitis media + eustachian tube (*eustachian, media, nonsuppur, om, otitis*)
 F512.11 Glue ear (*glue*)
 F52z Otitis media NOS
 F560 Meniere's disease (*meniere*)
 F563 Labyrinthitis (*labyrinthi*)
 F583 Tinnitus (*tinnitus*)
 F587 Otalgia (*otalgia*)
 F59 Deafness (*hearing, loss*)
 H00 Acute nasopharyngitis (*nasopharyn*)
 H00..16 Rhinitis - acute (*rhinitis*)
 H01 Acute sinusitis (*sinusitis*)
 H02 Acute pharyngitis (*pharyngiti*)
 H02..11 Sore throat NOS (*sore, throat*)
 H03 Acute tonsillitis (*tonsilliti*)
 H04 Acute laryngitis and tracheitis
 H11 Nasal polyps (*nasal, polyps*)
 H120 Chronic rhinitis (*rhinitis*)
 H120.11 Catarrh unspecified (*catarrh*)
 H13 Chronic sinusitis (*chronic, sinusitis*)
 H160 Chronic laryngitis (*laryngitis*)
 H17 Allergic rhinitis (*allergic, rhinitis*)
 R0043 [D] Vertigo NOS (*vertigo*)
 R047 [D] Epistaxis (*epistaxis*)

Eyes Read terms

Eyes Symptoms Read terms

12A1 FH: Glaucoma (*glaucoma*)
 1B72 Diplopia / double vision
 1B83 Has eye discharge
 1B88 Dry eyes (*dry*)
 1B86 Has an itchy eye
 1B84 Has eye pain
 1B85 Has a red eye
 1B87 Has watering eyes
 1B88 Dry eyes
 2BH2 O/E - fluorescein-corneal abr.

Eyes Diagnoses and Interventions Read terms

668 Ophthalmological monitoring
66T1 Glaucoma monitoring (*glaucoma*)
7264.11 Intracapsular extraction of cataract (*cataract*)
A544 Ophthalmic herpes simplex (*ophthalmic*)

ByuA [X] Malignant neoplasm of eye, brain and othr parts of cent

F4 Disorders of eye and adnexa (*eye*)
F4005 Eye infection (*eye*)
F41 Retinal detachments and defects (*retinal, detachment*)
F420 Diabetic retinopathy (*diabetic, retinopath*)
F425 Degeneration of macula and posterior pole (*degenerati, macula*)
F440.11 Iritis - acute (*iritis*)
F441.11 Chronic iritis (*iritis*)
F45 Glaucoma (*glaucoma*)
F450411 Raised intra-ocular pressure (*IOP*)
F46 Cataract (*cataract*)
F470 Hypermetropia (*hypermetro*)
F471 Myopia (*myopia*)
F472 Astigmatism (*astigmati*)
F486 Night blindness (*blindness, night*)
F490 Blindness, both eyes
F492 Low vision, both eyes
F4C0 Acute conjunctivitis (*conjunctiv*)
F4C1 Chronic conjunctivitis (*conjunctiv*)
F4C14.11 Allergic conjunctivitis (*allergic*)
F4C2 Blepharconjunctivitis (*blepharoco*)
F4C71 Subconjunctival haemorrhage (*haemorrhag, subconjunc*)
F4D0 Blepharitis (*blephariti*)
F4F14 Dry eye syndrome (*dry, eye*)
F4Kz4 Redness of eye NOS
F4H1 Optic atrophy (*atrophy, optic*)
SD810 Corneal abrasion (*abrasion, corneal*)
SE1z Contusion, eye NOS
SG0 Foreign body on external eye (*eye, fb, foreign*)

Gastrointestinal Read terms

Gastrointestinal Symptoms, O/E Read terms

1621 Weight steady
1625 Abnormal weight loss
1675 Jaundice
1922 Sore Mouth
194 Swallowing symptoms (*swallowing*)
1952 Regurgitates food
1954 Indigestion
1955 Heartburn
1956 Peptic Ulcer Symptoms (*peptic, symptoms, ulcer*)
1961 No abdominal pain
1962 Colicky abdominal pain (*colicky*)
1963 Non-colicky abdominal pain
1965 Biliary Colic
1966 Infantile Colic
1969 Abdominal Pain
1972 Epigastric pain (*epigastric*)
198 Nausea
199 Vomiting
19A Abdominal Distension (*abdominal, distension*)
19B Flatulence/Wind
19C Constipation
19D Tenesmus
19EA Change in bowel habit (*bowel, change*)
19E9 Worms in faeces
19F Diarrhoea (*diarrhoea*)
2516 Abdomen examined - NAD
25J O/E - abdominal mass palpated (*abdominal, mass*)
2C21 O/E - not clinically anaemic

Gastrointestinal investigations and interventions Read terms

4JM Helicobacter breath test (*breath, helicobact*)
4JM0 Helicobacter breath test positive (*positive*)
4JM1 Helicobacter breath test negative (*negative*)

4JN Helicobacter blood test (*blood, helicobact*)
 4JN0 Helicobacter blood test positive
 4JN1 Helicobacter blood test negative
 4JO CLO test for helicobacter pylori (*CLO, helicobact, pylori*)
 4JO0 CLO test positive (*CLO*)
 4JO1 CLO test negative (*CLO*)
 664 GIT disease monitoring (*GIT*)
 760L Antireflux operations (*antireflux*)
 761 Stomach and pylorus operations (*pylorus, stomach*)
 761D Fiberoptic endoscopic extirpation lesion of upper GI tract (*endoscopic, extirpatio, fiberoptic, lesion*)
 761E Other therapeutic fiberoptic endoscopy on upper GI tract (*endoscopic, GIT, fiberoptic*)
 761F Diagnostic fiberoptic endoscopic exam of upper GI tract (*endoscopic, fiberoptic*)
 761F0 Diagnostic fiberoptic endoscopy & biopsy of upper GI tract (*biopsy*)
 761F1 Diagnostic gastroscopy NEC
 761Fy Diagnostic fiberoptic endoscopic exam of upper GI tract OS
 761Fz Diagnostic fiberoptic endoscopic exam of upper GI tract NOS
 7645 Creation of ileostomy (*ileostomy*)
 7701z00 Other excision of appendix NOS
 771B.11 Colostomy (*colostomy*)
 7810.11 Cholecystectomy
 7840 Total excision of spleen (*excision, total*)
 7H1 Abdominal wall operations (*abdominal, wall*)
 8BAC Helicobacter eradication therapy (*eradicator, helicobact, therapy*)
 8BAE Dual therapy Helicobacter pylori (*dual, helicobact, pylori, therapy*)
 8BAF Triple therapy Helicobacter pylori (*helicobact, pylori, therapy, triple*)

Gastrointestinal Diagnoses Read terms

A0 Intestinal infectious diseases (*intestinal*)
 A01 Typhoid and paratyphoid fevers

A020 Salmonella gastroenteritis (*gastroente, salmonella*)
 A03 Shigellosis (*shigellosi*)
 A04 Other bacterial food poisoning
 A06 Other protozoal intestinal diseases (*intestinal, protozoal*)
 A08..11 Gastric flu (*flu, gastric*)
 A082.11 Travellers' diarrhoea (*diarrhoea, travellers*)
 A0821.11 Viral gastroenteritis
 A083 Diarrhoea of presumed infectious origin (*diarrhoea*)
 A083.11 Diarrhoea & vomiting -? Infect. (*D&V, D-V*)
 A083. 12 Infantile gastroenteritis (*infantile*)
 A542 Herpetic gingivostomatitis (*gingivosto*)
 A70 Viral hepatitis (*hepatitis, viral*)
 AC70 Ascariasis - roundworms
 AC74 Enterobiasis - threadworm (*enteriobias, threadworm*)
 B1 Malignant neoplasm of digestive organs (*malignant*)
B1 Malignant neoplasm of digestive organs and peritoneum
B11 Malignant neoplasm of stomach (*stomach*)
B13 Malignant neoplasm of colon (*colon*)
B14 Malignant neoplasm of rectum, rectosigmoid junction and anus (*anus*)
B17 Malignant neoplasm of pancreas (*pancreas*)
Byu1 [X] Malignant neoplasm of digestive organs
 D00 Iron deficiency anaemias (*IDA, iron*)
 G84 Haemorrhoids (*haemorrhoi*)
 J082 Oral aphthae (*aphthae, oral*)
 J101 Oesophagitis (*oesophagit*)
 J1011 Reflux oesophagitis (*reflux*)
 J10y4 Oesophageal reflux without mention of oesophagitis
 J102 Ulcer of oesophagus (*ulcer*)
 J11 Gastric Ulcer (*gastric, gu, ulcer*)
 J12 Duodenal Ulcer (*du, duodenal, ulcer*)
 J13 Peptic Ulcer (site unspecified) (*peptic, pu, ulcer*)

J15 Gastritis and Duodenitis (*duodenitis, gastritis*)
 J155 Gastritis unspecified
 J16y4 Dyspepsia (*dyspepsia*)
 J2 Appendicitis (*appendicit*)
 J20 Acute appendicitis
 J3 Hernia of abdominal cavity (*hernia*)
 J30 Inguinal Hernia (*inguinal*)
 J31 Femoral Hernia (*femoral*)
 J32 Umbilical Hernia (*umbilical*)
 J34 Diaphragmatic Hernia (*diaphragma*)
 J34 Hiatus hernia (use synonym) (*diaphragma*)
 J40 Regional enteritis - Crohn's Disease (*crohn, crohns, regional*)
 J4101 Ulcerative Colitis (*colitis*)
 J43 Gastroenteritis
 J431 Toxic gastro-enteritis (*gastroente, toxic*)
 J43z Chronic diarrhoea
 J50 Intestinal Obstruction (no hernia) (*intestinal, obstructio*)
 J510 Diverticulosis (*diverticul*)
 J511 Diverticulitis (*diverticul*)
 J520 Constipation - functional (*constipati, functional*)
 J520z Constipation NOS
 J521 Irritable Bowel Syndrome (*colon*)
 J530 Anal fissure (*fissure*)
 J55 Peritonitis (*peritoniti*)
 J573011 Rectal bleeding (*bleeding*)
 J61 Cirrhosis and Chronic Liver Disease (*cirrhosis, liver*)
 J62 Liver abscess and sequelae of chronic liver disease (*abscess, liver*)
 J64 Cholelithiasis (*cholelithi*)
 J64..15 Gallstones (*gallstones*)
 J67 Diseases of pancreas (*pancreas*)
 J681 Melaena (*melaena*)
 J69 Intestinal malabsorption (*intestinal, malabsorpt*)
 J690 Coeliac disease (*coeliac*)
 M180 Pruritus ani (*pruritus, ani*)
 R070 [D] Nausea and vomiting
 R077100 [D] Stools loose

R090 [D] Abdominal pain (*abdominal, pain*)

R0903 [D] Infantile colic (*colic, infantile*)

Genito-Urinary / Gynae Read terms

Genito-Urinary Symptoms and H/O Read terms

13H7 Unwanted pregnancy (*pregnancy, unwanted*)

14D4 H/O: recurrent cystitis

14E2 H/O: infertility - male (*infertilit*)

1512 Menopause (*menopause*)

157 H/O: Menstrual History (*menstrual*)

1571 H/O Amenorrhoea (*amenorrhoe*)

1573 H/O Menorrhagia (*menorrhagi*)

1574 H/O Dysmenorrhoea (*dysmenorrh*)

158 H/O Abnormal uterine bleeding (*abnormal, bleeding, uterine*)

1581 H/O Post-coital bleeding (*bleed, post-coita*)

1582 H/O Inter-menstrual bleeding (*bleed, imb, intermenst*)

1583 H/O Post-menopausal bleeding (*bleed, menopausal, pmb, post-menop*)

159 History of Gynaecological Problems (*gynaecolog*)

1591 H/O: recurrent vaginal disch. (*discharge, recurrent, vaginal*)

1592 H/O Pelvic Infection (*infection, pelvic*)

1593 H/O Stress Incontinence (*incontinen, stress*)

1594 H/O Genital Prolapse (*prolapse*)

1595 H/O Dyspareunia (*dyspareuni*)

1596 H/O Breast Problem (*breast*)

1597 H/O Female Infertility (*infertilit*)

1598 H/O Sexual Dysfunction

1599 H/O Hysterectomy (*hysterecto*)

159A H/O Tubal Ligation (*tl, tubal*)

1672 Flushes/goes red

1A12 Frequency of micturition

1A12 Micturition frequency NOS

1A13 Nocturia (*nocturia*)

1A24 Stress incontinence
1A25 Urgency
1A32 Cannot pass urine - retention
1A33 Micturition stream poor
1A34 Hesitancy
1A36 Terminal dribbling of urine
(*dribbling*)
1A52 Renal Colic
1A55 Dysuria (*dysuria*)
1A57 Pain in testicle
1A59 Pelvic Pain (*pain, pelvic*)
1A62 Urethral discharge
1A72 Vaginal discharge
1AA Prostatism (*prostatism*)

Genito-Urinary/Gynae investigations, interventions etc

25Q O/E - rectal examination done (*rectal*)
25Q1 O/E - rectal examination - NAD
25Q2 O/E 0 PR - prostatic swelling
26A O/E - vaginal discharge (*discharge, vaginal*)
3196 Prostatic hypertrophy risk score
(*hypertroph, prostatic, risk, score*)
43Z2 Prostate specific antigen (*prostate*)
44J3 Serum creatinine (*creatinine*)
461 Urine exam. - general
4615 MUS sent to lab
4616 MSU = no abnormality
4617 MSU = abnormal
4619 MSU = no growth (*growth*)
461A MSU - equivocal (*equivocal, MSU*)
4JK..11 Vaginal Swab (*swab, vaginal*)
4JK2 HVS (*high, HVS, swab, vaginal*)
54FZ Urinary contrast radiog. NOS
5735 Isotope static scan kidneys (*DMSA scan*)
574Z Isotope dynamic scan NOS
585B Ultrasound kidneys
61 Contraception (*contracept*)
614 Oral contraceptive
61H Contraception: female sterilisation
66J Gynae disease monitoring (*gynaecolog*)
66K Urinary disorder monitoring (*urinary*)

66U Menopause monitoring (*menopause*)
66U.11 Hormone replacement therapy
(*hormone*)
66U7 HRT started
7130 Total mastectomy operations
(*mastectomy*)
71312 Excision of lesion of breast
7B00 Transplantation of kidney (*transplant*)
7B36 Open prostatectomy (*prostatect*)
7B39 Endoscopic resection of outlet of
male bladder or prostate (*male*)
7D1C2 Colposcopy NEC (*colposcopy*)
7E04 Abdominal excision of uterus
(*abdominal*)
7E043 Total abdominal hysterectomy NEC
(*TAH, total*)
7E045 Abdominal hysterectomy and
bilateral salpingoophorectomy (*oophorecto, salpingoop*)
7E05 Vaginal excision of uterus (*vaginal*)
7E072 Dilation of cervix uteri and
curettage of uterus NEC (*D&C, DC, D-C, dilation*)
7E15 Open bilateral occlusion of fallopian
tubes (*bilateral, occlusion*)
7E16 Other open occlusion of fallopian tube
(*occlusion*)
7E1C Endoscopic bilateral occlusion of
fallopian tube (*endoscopic, occlusion*)
7E1D Other endoscopic occlusion of
fallopian tube
7L1A Compensation for renal failure
(*compensati, renal, failure*)
7L1B Placement ambulatory apparatus
compensation renal failure (*ambulatory, compensati, renal, failure*)
8B64 HRT (*hormone, hrt*)
96 Contraceptive claims (*contracept*)
9N0U Seen in family planning clinic
(*family, planning, clinic*)
L05 Legally induced abortion (*abortion, induced, legally*)
ZV252 [V] Sterilisation

Genito-Urinary Diagnoses Read terms

A541 Genital herpes simplex (*genital*)

A788 AIDS (*acquired, aids, immune, syndrome*)

A9 Syphilis and other venereal diseases

A9801 Acute gonococcal urethritis (*urethritis*)

A994 Nonspecific urethritis (*nonspecific, NSU, urethritis*)

AB2 Candidiasis (*candidiasis*)

AB21 Candidal vulvovaginitis

AD1 Trichomoniasis - trichomonas (*trichomoni*)

AD22.11 Crabs - pubic lice (*crabs*)

B34 Malignant neoplasm of female breast (breast)

B35 Malignant neoplasm of male breast

B4 Malignant neoplasm of genitourinary organ

B41 Malignant neoplasm of cervix (uteri) (cervix)

B41 Malignant neoplasm of cervix (uteri) (cervix)

B43 Malignant neoplasm of body of uterus

B43 Malignant neoplasm of body of uterus (body, uterus)

B44 Malignant neoplasm of ovary and other uterine adnexa (adnexa, uterine)

B440 Malignant neoplasm of ovary (ovary)

B440 Malignant neoplasm of ovary (ovary)

B46 Malignant neoplasm of prostate (prostate)

B46 Malignant neoplasm of prostate (prostate)

B47 Malignant neoplasm of testis (testis)

B47 Malignant neoplasm of testis (testis)

B77 Benign neoplasm of breast (*breast*)

B78 Uterine leiomyoma - fibroids (*fibroids, leiomyoma, uterine*)

B7A Benign neoplasm of ovary (*ovary*)

B7C0 Benign neoplasm of testis (*testis*)

Byu6 [X] Malignant neoplasm of breast

Byu7 [X] Malignant neoplasm of female genital organs

Byu8 [X] Malignant neoplasm of male genital organs

Byu9 [X] Malignant neoplasm of urinary tract

C162 Postablative ovarian failure

C163 Other ovarian failure

E2273 Impotence (*impotence*)

E277 Non-organic encopresis (*encopresis*)

K0 Nephritis, nephrosis and nephrotic syndrome (*nephritis*)

K00 Acute Glomerulonephritis (*acute, glomerulon, gn, gna*)

K01 Nephrotic syndrome (*nephrotic*)

K02 Chronic glomerulonephritis

K04 Acute Renal failure (*acute, arf, failure, renal, rf*)

K05 Chronic Renal failure (*chronic, crf, failure, renal, rf*)

K06 Renal failure unspecified (*failure, renal, rf*)

K08 Impaired Renal Function (*function, impaired*)

K1 Other urinary system diseases

K10 Infections of kidney (*infection, kidney*)

K100 Chronic pyelonephritis (*chronic, pyelonephr*)

K101 Acute pyelonephritis (*acute, pyelonephr*)

K102 Renal and perinephric abscess (*abscess*)

K103 Pyeloureteritis cystica (*cystica, pyelourete*)

K10y Pyelonephritis and pyonephrosis

K10z Infection of kidney NOS

K12 Calculus of kidney / ureter (*calculus*)

K15 Cystitis (*cystitis*)

K150 Acute cystitis

K1547 Cystitis in trichomoniasis (*trichomoni*)

K155 Recurrent cystitis (*recurrent*)

K17y Other urethritis

K190 Urinary tract infection - site not specified (*UTI*)

K196 Urinary obstruction unspecified (*obstructio*)

K20 Benign Prostatic Hypertrophy (*benign, hypertroph, prostatic*)

K20..16 Prostatism (*prostatism*)

K23 Hydrocele (*hydrocele, hydrocoele*)

K24 Orchitis and Epididymitis
 K26 Male - infertility (*infertilit, male*)
 K27y1 Impotence of organic origin (*impotence*)
 K282 Torsion of testis (*torsion, testis*)
 K302 Fibroadenosis of breast (*breast, fibroadeno*)
 K40 Ovarian, fallopian tube and pelvic inflammatory disease
 K409 Acute Pelvic Inflammatory Disease (*acute, disease, inflammato, pelvic, pid*)
 K41 Uterine inflammatory diseases excluding the cervix
 K4209 Chlamydia cervicitis (*chlamydia*)
 K421 Vaginitis and vulvovaginitis
 K50 Endometriosis (*endometrio*)
 K51 Genital prolapse (*genital, prolapse*)
 K531 Corpus Luteum cyst (*corpus, luteum*)
 K550 Erosion / ectropion of cervix (*cervix*)
 K565 Leukorrhoea unspecified (*leukorrhoe*)
 K583 Dysmenorrhoea (*dysmenorrh*)
 K586 Stress incontinence - female
 K59 Menstrual problems
 K590 Absence of menstruation (*absence*)
 K592 Excessive or frequent menstruation (*excessive*)
 K593.11 Pubertal bleeding and menorrhagia (*pubertal*)
 K59yx11 Dysfunctional uterine bleeding (*bleeding, DUB*)
 K5A Menopausal and postmenopausal disorders (*menopausal*)
 K5A2011 Hot flushes - menopausal (*hot, flushing*)
 K5B Infertility - female (*infertilit, female*)
 K5X Polyp of female genital tract (*polyp*)
 L00 Hydatiform mole (hydatidifo, mole)
 L166.11 Cystitis of pregnancy (*cystitis*)
 M1811 Pruritus vulvae
 PC5 Undescended testicle
 R082 [D] Retention of urine (*retention, urine*)
 ZV76212 [V]Routine cervical smear (*cervical, smear*)

Haematology Read terms

Blood Disorders Symptoms Read terms

1443 H/O: gout (*gout*)
 1451 H/O: anaemia - iron deficient
 1682 Fatigue
 1683 Tired all the Time
 16B2 Bruises easily
 16E Feels unwell (*feels, unwell*)
 2227 O/E rash present (*rash*)
 2621 Vitamin B12 deficiency (*B12*)
 42P2 Thrombocytopenia (*thrombocyt*)
 669 Gout monitoring (*gout*)
 66F Blood disorder monitoring (*blood*)

Blood Disorders Diagnoses Read terms

A84 Malaria (*malaria*)
 B61 Hodgkin's disease (*hodgkin*)
 B64 Lymphoid leukaemia (*leukaemia, lymphoid*)
 B65 Myeloid leukaemia (*myeloid, leukaemia*)
 B680 Acute leukaemia NOS
 B681 Chronic leukaemia NOS
 B937 Neop uncertain behaviour other lymphatic /haematopoietic tiss (*lymphatic*)
 B9375 Idiopathic thrombocythaemia (*idiopathic, thrombocyt*)
 C34 Gout (*gout*)
 D0 Deficiency anaemias (*anaemias, deficiency*)
 D000 Iron deficiency due to chronic blood loss
 D0001 Iron deficiency due to dietary causes
 D010 Pernicious anaemia (*PA, pernicious*)
 D104 Thalassaemia (*thalassaem*)
 D105 Sickle cell trait (*sickle, trait*)
 D106 Sickle cell anaemia (*sickle*)
 D30..11 Bleeding disorders
 D300 Haemophilia A (factor VIII deficiency) (*factor*)
 D3100 Henoch-Scholein purpura (*henoch*)
 E205 Tired all the time (*TATT*)

N023 Gouty arthritis (*gouty*)
R0062 [D] Fever NOS
R026 [D] Pallor and flushing
R032 [D] Abnormal loss of weight (*loss, weight*)
R092 [D] Splenomegaly (*splenomega*)
7840 Total excision of spleen (*excision, total*)

Infectious Diseases Read terms

1413 H/O: malaria (*malaria*)
65N1 Antimalarial drug prophylaxis (*malaria*)
65R Isolation because of infection (*infection, isolation*)
65T Remove potential infection source (*remove*)
A1 Tuberculosis (*tb, tuberculosis*)
A52 Chickenpox (*chickenpox, varicella*)
A53 Herpes Zoster (*herpes, zoster*)
A54 Herpes Simplex (*herpes, simplex*)
A55 Measles (*measles*)
A56 Rubella (*rubella*)
A570 Erythema Infectiosum (*erythema*)
A701 Viral (serum) Hepatitis A
A703 Viral (serum) hepatitis B (*serum*)
A72 Mumps (*mumps*)
A788 Acquired immune deficiency syndrome (*acquired, AIDS, immune, syndrome*)
A789 HIV resulting in other disease (*HIV, human, immunodef, virus*)
A79z Viral infection NOS
A84 Malaria (*malaria*)
A9 Venereal Diseases (*syphilis*)
A992 Non-specific urethritis (*nonspecific, nsu, urethritis*)
AB Mycoses (*mycoses*)
AB0 Ringworm (*dermatophy*)
AB05.12 Tinea corporis (*corporis*)
AB23 Candidiasis of skin and nails (*nails, skin*)
AD22.11 Crabs - pubic lice (*crabs*)

AD30 Scabies (*scabies*)
C39 Disorders of the immune mechanism (*immune*)
Z9KB Isolation because of infection
Z9KD Remove potential infection source
ZV0 [V]Potential health hazard related to communicable disease

Major and Day Case Surgery Read terms

70 Nervous System operations (*nervous*)
71 Endocrine System and Breast operations
711 Thyroid gland and parathyroid gland operations
7130 Total mastectomy operation (*mastectomy*)
7131 Other excision of breast operations (*excision*)
72 Eye operations (*eye*)
7212 Extirpation of lesion of eyelid (*extirpation*)
7265 Incision of capsule of lens (*capsule, incision, lens*)
7267 Prosthesis of lens (*prosthesis, lens*)
7272 Destruction of lesion of retina
73 Ear operations (*ear*)
7313 Drainage of middle ear (*drainage, middle*)
74 Respiratory Tract operations (*respirator, tract*)
7402 Operation on septum of nose (*septum*)
7404 Surgical arrest of bleeding from internal nose (*arrest, bleeding, surgical*)
7406 Other operation on internal nose
7421 Operation on adenoid
75 Mouth operations (*mouth*)
7511 Surgical removal of tooth (*surgical, removal*)
7512 Simple extraction of tooth (*extraction, simple*)
7530 Excision of tonsil (*excision*)

- 76 Upper Digestive Tract ops (*digestive, tract, upper*)
- 761F Diagnostic fiberoptic endoscopic examination of upper gastric tract (endoscopic, fiberoptic)
- 77 Lower Digestive Tract ops (*digestive, lower, tract*)
- 771J Diagnostic endoscopic examination of colon (diagnostic, endoscopic)
- 771M Diagnostic fiberoptic sigmoidoscopic examination lower bowel (diagnostic, endoscopic, fiberoptic, sigmoidosc)
- 7734 Excision of haemorrhoid (excision)
- 78 Other Abdominal Organ operations
- 7810 Excision of gall bladder (excision)
- 79 Heart operations (*heart*)
- 792 Coronary artery operations
- 7926 Connection of other thoracic artery to coronary artery (connection)
- 7A Artery and Vein operations (*artery, vein*)
- 7A4B Transluminal operations on femoral or popliteal artery
- 7A67 Ligation of varicose vein of leg (leg, ligation, varicose, vv)
- 7B Urinary operations (*urinary*)
- 7B00 Transplantation of kidney (transplant)
- 7B27 Endoscopic extirpation of lesion of bladder (endoscopic)
- 7B2A Diagnostic cystoscopy (cystoscopy, diagnostic)
- 7B36 Open prostatectomy (prostatect)
- 7B39 Endoscopic resection of outlet of male bladder or prostate (male)
- 7C Male Genital Organ operations (genital, male, organ)
- 7C11 Excision of vas deferens (deferens, excision, vas)
- 7D Lower Female Genital Tract operations (*female, genital, lower, tract*)
- 7D18 Other repair of vaginal prolapse (prolapse, repair)
- 7D1C Exploration of vagina (exploratio)
- 7E Upper Female Genital Tract operations (*female, genital, tract, upper*)
- 7E01 Destruction of lesion of cervix uteri (cervix, destructio)
- 7E04 Abdominal excision of uterus (abdominal)
- 7E05 Vaginal excision of uterus (vaginal)
- 7E07 Curettage of uterus (curettage)
- 7E08 Other evacuation of contents of uterus (evacuation)
- 7E15 Open bilateral occlusion of fallopian tubes (bilateral, occlusion)
- 7E16 Other open occlusion of fallopian tube (occlusion)
- 7E1C Endoscopic bilateral occlusion of fallopian tubes (endoscopic, occlusion)
- 7E1D Other endoscopic occlusion of fallopian tube (endoscopic, occlusion)
- 7F Obstetric operations (*obstetric*)
- 7G Skin operations (*skin*)
- 7G05 Other excision of lesion of skin
- 7G09 Other destruction of lesion of skin of other site (destructio)
- 7G091 Cryotherapy to lesion of skin NEC (cryotherap)
- 7G0A Punch biopsy of skin (biopsy, punch)
- 7H Soft Tissue operations (*soft, tissue*)
- 7H11 Primary repair of inguinal hernia (hernia, inguinal, primary, repair)
- 7J Skull or Spine Bone and Joint operations (*bone, joint, skull, spine*)
- 7K Other Bone and Joint operations (*bone*)
- 7K20 Total prosthetic replacement of hip joint using cement (cement, prosthetic, replacemen, total)
- 7K30 Total prosthetic replacement of knee joint using cement (cement, prosthetic, replacemen, total)
- 7K62 Other total prosthetic replacement of other joint (prosthetic, replacemen, total)
- 7L0 Operations covering multiple systems (e.g. amputations, corrections of congenital deformities) (*covering, multiple, system*)
- 8B64.11 Hormone implant - HRT (*hormone, implant*)
- ZV58312 [V]Removal of sutures (*ROS, suture*)

Mental Health Read terms

Psychiatric and Psychological Symptoms Read codes

For Alcohol related Read terms, see the section on Alcohol on page 57

13Hc Bereavement (*bereavemen*)
13HT1 Stress at home (*home, stress*)
13JM Problems at work (*problems, work*)
1465 H/O: depression (*depression*)
1466 H/O: anxiety state (*anxiety*)
1B13 Anxiousness
1B17 Depressed
1B19 Suicidal
1B1B Insomnia
1B1B.11 C/O - insomnia (*insomnia*)
1B1E Hallucinations (*hallucinat*)
1B1J Emotional Problems (*emotional*)
1B1K Lonely (*lonely*)
1B1L Stress related problem (*stress*)
1BH Delusions (*delusions*)
2257 O/E - depressed (*depressed*)
382 Diagnostic psychology (*psychology*)
383 Psychological Testing (*psychologi*)
384 Psychological Analysis (*analysis*)
3841 Psychoanalysis
3871 Diagnostic assessment
3A Disability Assessment - mental (*assessment, disability, mental*)
44J3 Serum creatinine recorded
44JC Corrected plasma creatinine level
44JD Corrected serum creatinine level
44JF Plasma creatinine level
44W8 Serum lithium level
44W80 Lithium level therapeutic
44W8 Serum lithium level and qualifier normal
44W8 Serum lithium level, and value >0.6 - < 1.0
46Q8 Urine benzodiazepine (*benzodiaze*)
665 Psych. Disorder monitoring (*psychiatri*)

671 Counselling - general
672 Person counselled
673 Person counselled by
6736 Counsellor by a counsellor
674 Social counselling (*social*)
675 Grievance counselling (*grieving*)
677 Medical counselling (*medical*)
6772 Disease counselling
6779 Psychological counselling (*psychologi*)

6A6 Mental health review

8BA7 Relaxation therapy (*relaxation*)

9H6 On national service framework mental health register

9H7 Removed from severe mental illness register

9H8 On severe mental illness register

9N2B Seen by counsellor

9NJ1 In-house counselling (*counsellin*)

9ON Stress monitoring admin. (*stress*)

9h91. Excepted from mental health quality indicators: Patient unsuitable

9h92. Excepted from mental health quality indicators: Informed dissent

Z4 Counselling

Z41 Abuse counselling (*abuse*)

Z43 Behaviour modification technique (*behaviour*)

Z44 Breast feeding counselling (*breast, breastfeed, counsellin, feeding*)

Z4B Disease counselling

Z4L Psychological counselling

Z5 Psychotherapy - And hierarchical codes Z51, Z52, Z53 etc.

Z5A1 Psychoanalysis

Z6Q Relaxation therapy

ZI Physical and psychosocial approaches (and hierarchical codes ZI1, ZI2 etc)

Psychiatric and Psychological Diagnoses

E000 Senile Dementia

E10z Schizophrenia

E11 Affective psychoses (*affective*)

E110 Manic disorder - single episode

E111 Recurrent manic episodes
 E112 Single major depressive episode
 E1121 Single major depressive episode, mild
 E1124 Single major depressive episode, severe, with psychosis
 E113 Recurrent major depressive episode
 E1134 Recurrent major depressive episode, severe, with psychosis
 E114 Bipolar affective disorder, currently manic
 E115 Bipolar affective disorder, currently depressed
 E116 Mixed bipolar affective disorder
 E117 Unspecified bipolar affective disorder
 E118 Seasonal affective disorder (*disorder, seasonal*)
 E11y Other and unspecified manic-depressive psychosis
 E200 Anxiety States (*anxiety, state*)
 E2001 Panic disorder (*panic*)
 E2002 Generalised anxiety disorder (*generalise*)
 E204 Neurotic depression reactive type (*depression, neurotic, reactive*)
 E204.11 Postnatal depression (*depression, natal, postnatal, post-natal*)
 E21 Personality Disorders (*personalit*)
 E2141 Obsessive compulsive disorder (*obsessiona*)
 E23 Alcohol dependence (*alcohol, dependence*)
 E230 Acute alcoholic intoxication in alcoholism (*alcoholic, intoxicati*)
 E231 Chronic alcoholism
 E24 Drug dependence (*dependence, drug*)
 E240 Opioid type drug dependence (*opioid*)
 E241 Hypnotic or anxiolytic dependence (*hypnotic*)
 E255 Nondependent opioid abuse (*opioid*)
 E256 Nondependent cocaine abuse (*cocaine*)
 E259 Nondependent mixed drug abuse NOS (*mixed*)
 E271 Anorexia nervosa (*anorexia, nervosa*)
 E274 Non-organic sleep disorders (*sleep*)
 E2751 Bulimia (*bulimia, overeating*)

E28 Acute Reaction to Stress (*reaction, stress*)
 E2C1 Non aggressive unsocial conduct disorder
 TJ94 Adverse reaction to benzodiazepine-based tranquillisers (*benzodiazepine, tranquilliser*)
 TK Suicide / self-inflicted injury (*self, sui, suicide*)

Neurological Read terms

Nervous System Symptoms Read terms

13ZD Eye witness to epileptic seizure (*seizure, witness*)
 1473 H/O: epilepsy (*epilepsy*)
 1474 H/O: migraine (*migraine*)
 1475 H/O: trigeminal neuralgia (*trigeminal*)
 1B1G Headache
 1B22 Has a tremor
 1B320 Weakness of arm (*arms*)
 1B321 Weakness of leg (*legs*)
 1B323 Facial Weakness (*facial*)
 1B41 Pins and Needles (*pins*)
 1B44 Has numbness (*numbness*)
 1B46 Paraesthesia
 1B52 Unsteadiness
 1B53 Dizziness
 1B63 Had a fit
 1B65 Had a collapse
 1B68 Felt faint (*felt*)
 1B93 Difficulty with speech
 1BA Headache site (*headache*)
 1BB Headache character (*headache*)
21260 Epilepsy resolved
 2827 O/E - febrile convulsion (*febrile*)
 2944 O/E - muscle rigid - cogwheel
 297A O/E - Parkinsonian tremor (*parkinsoni, tremor*)
 2994 O/E - Parkinson gait
 61461 Headache caused by oral contraceptive pill
 666 Neurol. Disease monitoring (*neurologic*)

66YB Chronic obstructive pulmonary disease monitoring

66YM Chronic obstructive pulmonary disease annual review

667% Epilepsy disease monitoring (*epilepsy*)

6673 Driving licence

6675 Fit frequency (*fit*)

6676 Last Fit (*fit*)

6677 Epilepsy drug side effects

6678 Epilepsy treatment changed

6679 Epilepsy treatment started

667A Epilepsy treatment stopped

667F Seizure free >12 months

667F Seizure free >12 months

667P No seizures on treatment

667Q 1-2 seizures a year

667R 2-4 seizures a year

667S 1-7 seizures a year

667T Daily seizures

667V Many seizures a day

66S Chronic dis - care arrangement (*chronic, care, shared*)

8BIF Epilepsy medication review

8BL3 Patient on maximal tolerated anticonvulsant therapy

9h61. Excepted from epilepsy quality indicators: Patient unsuitable

9h62. Excepted from epilepsy quality indicators: Informed dissent

Nervous System Diagnoses Read terms

A53 Shingles (*shingles*)

AD2z Pediculosis and phthirus infection NOS

B51 Malignant neoplasm of brain (*brain*)

C106 Diabetes mellitus with neuropathy (*neuropathy*)

E000 Uncomplicated senile dementia

E001 Presenile dementia (*presenile*)

E2781 Tension headache (*headache, tension*)

Eu02z [X] Unspecified dementia (*dementia*)

F00 Bacterial Meningitis (*bacterial, meningitis*)

F0011 Meningitis due to viral organisms EC (*viral*)

F01z Meningitis - other organisms NOS

F110 Alzheimer's disease (*alzheimer*)

F12 Parkinson's Disease (*parkinson*)

F1321 Progressive myoclonic epilepsy

F20 Multiple Sclerosis (*ms, multiple, sclerosis*)

F22 Hemiplegia (*hemiplegia*)

F23 Congenital Cerebral palsy (*cerebral, cp, palsy*)

F25 Epilepsy (*epilepsy*)

F25 Epilepsy

F25-F2515 (excluding F2516 Grand mal seizure)

F251y - F25z (Generalised convulsive epilepsy)

F26 Migraine (*migraine*)

F286.16 ME - Myalgic encephalomyelitis (*ME*)

F301 Other specified trigeminal neuralgia

F302 Atypical face pain (*atypical, face*)

F36 Hereditary & idiopathic peripheral neuropathy (*neuropathy*)

F37z Toxic or inflammatory neuropathy NOS

G65 Transient cerebral ischaemia (*cerebral, ischaemia, transient*)

G66 Stroke and cerebrovascular accident unspecified

K5A22 Menopausal headache (*headache*)

R000311 [D]Loss of consciousness (*consciousn, loc, loss*)

R0030 [D] Convulsions, febrile (*febrile*)

R0040 [D] Dizziness (*dizziness*)

R040 [D] Headache (*headache*)

S0 Fracture of skull (*fracture, skull*)

SC200 Traumatic epilepsy

Orthopaedic Read terms

Orthopaedic and trauma symptoms Read codes

1443 H/O: gout (*gout*)
14G1 H/O: rheumatoid arthritis (*rheumatoid*)
14G2 H/O: osteoarthritis (*osteoarthr*)
14G4 H/O: back problem (*back*)
14K H/O: poisoning (*poisoning*)
16A Stiff neck symptom (*neck, stiff*)
16A3 Wry neck/torticollis
16C2 Backache
16C3 Backache with radiation
16C4 Back pain worse on sneezing
16C5 C/O - low back pain (*lbp, low*)
16C7 C/O - upper back ache (*ache, back, upper*)
183Z Oedema NOS
1D21.12 C/O - a neck symptom (*neck*)
1D24.11 C/O - a back symptom (*back*)
2H45 O/E - joint movement painful
2H3Z O/E - joint swelling NOS
2H54 O/E - joint unstable
2998 O/E - limping gait (*limping*)
43F1 Rheumatoid factor positive
669 Gout monitoring (*gout*)
66H Rheumatol. Disorder monitoring
66H..11 Arthritis monitoring (*arthritis*)
68I Chemical / other poison screen

Musculoskeletal Diagnoses Read codes

C34 Gout (*gout*)
N040 Rheumatoid Arthritis (*arthritis, ra, rheumatoid*)
N0451 Juvenile seronegative polyarthritis (*seronegati, polyarthri*)
N05 Osteoarthritis and allied disorders
N05z Osteoarthritis NOS (*osteoarthr*)
N06z Arthropathy NOS (*arthropath*)
N094 Pain in joint - arthralgia (*arthralgia, pain*)

N100 Ankylosing spondylitis (*ankylosis, spondyliti*)
N11..12 Osteoarthritis of spine (*osteoarthr*)
N110 Cervical spondylosis without myelopathy (*cervical, spondylosi*)
N110.12 Osteoarthritis of cervical spine (*cervical*)
N12 Intervertebral disc disorders (*disc, interverte, pid*)
N135z12 Wry neck (*wry*)
N142 Pain in lumbar spine (*lumbar, pain*)
N143 Sciatica (*sciatica*)
N145 Backache, unspecified (*backache*)
N1460 Lumbosacral ankylosis (*ankylosis, lumbosacra*)
N20 Polymyalgia rheumatica (*pmr, polymyalgi, rheumatica*)
N210 Adhesive Capsulitis of shoulder (*adhesive, capsulitis, shoulder*)
N210 Frozen Shoulder (synonym) (*adhesive, capsulitis, shoulder*)
N2110 Rotator Cuff Shoulder Syndrome
N2132 Lateral epicondylitis of elbow (*elbow, lateral, epicondyl*)
N2133 Olecranon Bursitis (*bursitis, olecranon*)
N2140 Bursitis of wrist (*bursitis, wrist*)
N2164 Patellar Tendinitis (*patellar, tendinitis*)
N2241 Ganglion of joint (*joint*)
N2471 Leg cramps (*cramp, leg*)
N247111 Night cramps (*night*)
N330 Osteoporosis (*osteoporos*)
Q007 Fetus/neonate affected by poison transferred placenta/breast
S20 Fracture of clavicle (*clavicle*)
S228 Fracture of lower end of humerus (*end, lower*)
S2341 Closed Colles fracture (*colles*)
S30 Fracture of neck of femur (*femur, fracture, neck, nof*)
S34 Fracture of ankle (*ankle*)
S5 Sprains and strains of joints and adjacent muscles (*sprains, strains*)
S550 Ankle sprain (*ankle, sprain*)
S560 Sprain, lumbosacral ligament (*lumbosacra*)

S5704 Whiplash injury (*injury, whiplash*)
 S572 Lumbar sprain (*lumbar*)
 S60 Concussion (*concussion*)
 S64.12 Head injury NOS (*intracran*)
 S8 Open wound of head, neck and trunk (*open, wound*)
 S9 Open wound of upper limb (*limb, open, upper, wound*)
 SA Open wound of lower limb (*limb, lower, open, wound*)
 SC40 Late effect of poison drug/medicament/biological substance
 SH Burns
 SL Poisoning
 SM Nonmedicinal agent causing toxic effects (*toxic*)
 T1 Motor vehicle traffic accidents (MVTA) (*accident, motor, mva, mvta, rta, traffic, vehicle*)
 T73 Place of occurrence of accident or poisoning- industrial place / premises (*accident, place, poisoning*)
 T8 Accidental poisoning, by drugs, medicines and biologicals (*accidental, drugs, poisoning*)
 T9 Accidental poisoning by other non-drug substances
 TC Accidental falls (*accidental, falls*)
 TE5 Venomous animals+plants - cause of poisoning (*animals, plants, venom*)
 TE6.11 Animal bites (*bites*)
 TE60 Dog bite (*dog*)
 TH02 Late effects of accidental poisoning (*poison*)
 TL2 Assault by poisoning (*poisoning*)
 TLxy0 Assault by bite of human being (*bite, human*)
 TL6 Assault by cutting and stabbing instruments (*cutting*)
 TN Injury undetermined whether accidentally/purposely inflicted (*accidental, injury*)
 ZV156 [V] Personal history of poisoning (*poisoning*)

Respiratory Disease and Asthma Read terms

Respiratory Symptoms / Investigations /Interventions Read terms

137 Tobacco consumptions - For smoking Read terms, see the section on smoking on page 57.

1371 Never smoked tobacco

1381 Exercise physically impossible

1382 Avoid even trivial exercise

1383 Enjoys light exercise

14B1 H/O: hay fever (*hay*)

14B2 H/O: pneumonia (*pneumonia*)

14B4 H/O: Asthma (*asthma*)

14LJ H/O: influenza vaccine allergy

171 Cough (*cough*)

1712 Dry cough

1713 Clear cough

1714 Productive cough - green sputum

1715 Productive cough - yellow sputum

172 Haemoptysis (blood, sputum, haemoptysi)

173 Breathlessness (*breathless*)

1737 Wheezing

173A Exercise induced asthma (*asthma, exercise*)

173B Nocturnal cough / wheeze (*cough, nocturnal, wheeze*)

1C6 Nose bleed symptoms (*bleed, nose*)

1C7 Snoring symptoms (*snoring*)

1C8 Nasal symptoms OS

1C9 Sore Throat (*sore, throat*)

1CA Hoarseness symptom (*hoarseness*)

1CB Throat symptoms NOS (*throat*)

21262 Asthma resolved

23 Examination of respiratory system (*examinatio, respirator*)

231511 O/E chest examination normal (*chest*)

3395 Peak exp. flow rate: PEFR/PFR

3397 Forced expiratory volume - FEV in the last year (*FEV, forced*)

3398-3399 (FEV)

339a FEV1 before bronchodilation
339A Peak flow rate before bronchodilation
339B Peak flow rate after bronchodilation
339M FEV1/FVC ratio
339O Forced expired volume in 1 second
(expired, forced, second, volume)
339R FEV1/FVC percent
339S Percent predicted FEV1
339T FEV1/FVC > 70% of predicted
339U FEV1/FVC < 70% of predicted
339b FEV1 after bronchodilation
339c PEFr pre steroids
339d PEFr post steroids
339e FEV1 pre steroids
339f FEV1 post steroids
339g Serial peak expiratory flow rate
339j FEV1/FVC ratio pre steroids
339k FEV1/FVC ratio post steroids
339l FEV1/FVC ratio before bronchodilator
339m FEV1/FVC ratio after bronchodilator
339n Serial peak expiratory flow rate abnormal
33G Spirometry reversibility
33H Salbutamol reversibility
33I Ipratropium reversibility
33J Combined reversibility
33K Steroid reversibility
5882 Spirometry
 6572 Pneumococcal vaccination
(pneumococ)
65E Influenza vaccination *(flu, influenza)*
 663 Respiratory disease monitoring including:
 663.. 12 Chronic resp. dis. Monitoring
(respirator)
 663..11 Asthma monitoring *(asthma)*
6636 Inhaler technique shown *(inhaler)*
6637 Inhaler technique observed
 6638 Home nebuliser
 6639 Home oxygen supply
 663F Oral steroids started *(started)*
663H Inhaler technique - good
663I Inhaler technique - poor
663J Airways obstruction reversible
663K Airways obstruction irreversible
 663L Bronchodilators used more than once daily *(bronchodil)*
 663U Asthma management plan given
(management, plan)
66YA Step down change in asthma management plan
66YJ Asthma annual review
66YK Asthma follow-up
66YX PEFr monitoring
66YY PEFr monitoring using diary
68M Spirometry screening
68NE No consent - influenza imm
 760L Antireflux operations *(antireflux)*
8B3j Asthma medication review
8I2F Influenza vaccination contraindicated
8I6D Influenza vaccination not indicated
9h51. Excepted from COPD quality indicators: Patient unsuitable
9h52. Excepted from COPD quality indicators: Informed dissent
9hA1. Excepted from asthma quality indicators: Patient unsuitable
9hA2. Excepted from asthma quality indicators: Informed dissent
 9N1d Seen in Asthma clinic
9OJ2 Refuses asthma monitoring
 9OJA Asthma monitoring check done
9OJA Asthma monitoring check done
 9OX Influenza vacc.administration
(influenza, vaccinatio)
9OX5 Influenza vaccination declined

Respiratory Diagnoses Read terms

A340 Streptococcal sore throat (*sore, streptococ, throat*)

B2 Malign neop of respiratory trace and intrathoracic organs

B22 Malignant neoplasm of trachea, bronchus and lung (*lung*)

Byu2 [X] Malignant neoplasm of respiratory and intrathoracic organ

C370 Cystic fibrosis (*cf, cystic*)

H00 Acute nasopharyngitis (*nasopharynx*)

H01 Acute sinusitis (*sinusitis*)

H02 Acute Pharyngitis (*pharyngitis*)

H03 Acute Tonsillitis (*tonsillitis*)

H04 Acute Laryngitis & Tracheitis

H044 Croup (*croup*)

H05 Other acute upper respiratory infections

H05z URTI (*upper, uri*)

H05z.11 Upper respiratory tract infection NOS

H06 Acute Bronchitis & Bronchiolitis

H060 Acute bronchitis (*bronchitis*)

H06z1 Lower respiratory tract infection (*lower, resp, tract*)

H07 Chest cold (*chest, cold*)

H0y Other specified acute respiratory infections

H0z Acute respiratory infection NOS

H12 Chronic pharyngitis and nasopharyngitis (*chronic*)

H13 Chronic sinusitis (*chronic, sinusitis*)

H160 Chronic laryngitis (*laryngitis*)

H17 Allergic rhinitis (*allergic, rhinitis*)

H2 Pneumonia and influenza (*pneumonia*)

H20 Viral pneumonia (*viral*)

H21 Lobar (pneumococcal) pneumonia (*lobar, pneumococ*)

H22 Other bacterial pneumonia (*bacterial*)

H23 Pneumonia due to other specified organisms

H24 Pneumonia with infectious diseases EC

H25 Bronchopneumonia due to unspecified organisms (*bronchopne*)

H26 Pneumonia (unspecified)

H27 Influenza (*fluenza, influenza*)

H27z.11 Flu like illness (*flu*)

H28 Atypical pneumonia (*atypical*)

H3 Chronic Obstructive Airways Disease (*chronic, copd, obstructiv, pulmonary*)

H30 Bronchitis unspecified (*bronchitis*)

H31 Chronic Bronchitis (*bronchitis, chronic*)

H31 Chronic bronchitis

H310 Simple chronic bronchitis (*simple*)

H3100 Chronic catarrhal bronchitis (*catarrhal*)

H310z Simple chronic bronchitis NOS

H311 Mucopurulent chronic bronchitis (*mucopurule*)

H3110 Purulent chronic bronchitis (*purulent*)

H312 Obstructive chronic bronchitis (*obstructiv*)

H3120 Chronic asthmatic bronchitis (*asthmatic*)

H313 Mixed simple and mucopurulent chronic bronchitis (*mixed, mucopurule, simple*)

H32 Emphysema (*emphysema*)

H33 Asthma (*asthma*)

H33z1 Asthma attack (*attack*)

H34 Bronchiectasis (*bronchiect*)

H35 Extrinsic allergic alveolitis (*allergic, alveolitis, extrinsic*)

H36 Mild chronic obstructive pulmonary disease

H37 Moderate chronic obstructive pulmonary disease (*moderate*)

H38 Severe chronic obstructive pulmonary disease

H3y Other specified chronic obstructive pulmonary disease

H3z Chronic obstructive pulmonary disease NOS

H4 Lung disease due to external agents (*lung*)

H42 Silica and silicate pneumoconiosis (*silica*)

H5 Other respiratory system diseases

H52 Pneumothorax (*pneumothor*)

H581 Interstitial emphysema (*emphysema, interstiti*)

H582 Compensatory emphysema
(*compensato, emphysema*)
H591 Chronic respiratory failure
H5B Sleep Apnoea
H5C Choking due to airways obstruction
(*airways, choking, obstructio*)
P8 Respiratory system congenital
abnormalities (*respirator*)
R0609 [D] Wheezing (*wheezing*)
**U60K4 [X]Influenza vaccine causing
adverse effects in therapeutic use**
ZV048 [V]Influenza vaccination
**ZV14F [V]Personal history of influenza
vaccine allergy**

Skin etc Read terms

A780 Molluscum contagiosum (contagiosu,
molluscum)
A781.11 Verrucas - warts (*verrucae*)
AB0..11 Fungal infection of skin (*fungal*)
AB05. 12 Tinea corporis (*corporis*)
AD2 Pediculosis and phthirus infections
(*pediculosi, phthirus*)
AD2..11 Lice (*lice*)
AD20.11 Nits - head lice (*nits*)
AD22.11 Crabs - pubic lice (*crabs*)
AB23 Candidiasis of skin and nails (*nails,
skin*)
AD30 Scabies (*scabies*)
**B31 Malignant neoplasm of connective
and other soft tissue**
**B32 Malignant Melanoma of skin
(malignant, melanoma, skin)**
B33 Other malignant neoplasm of skin
(*skin*) (synonym - Basal cell carcinoma)
**B3y Malig neop of bone, connective tissue,
skin and breast OS**
B3z Malignant melanoma of skin NOS
**Byu4 [X] Melanoma and other malignant
neoplasms of skin**
**Byu41 [X] Malignant melanoma of skin,
unspecified**
**Byu5 [X] Malignant neoplasm of
mesothelial and soft tissue**

B74 Lipoma (*lipoma*)
BB2A [M] Squamous cell carcinoma NOS
BBE0.12 [M] Naevus NOS (naevus)
BBE1 [M] Malignant melanoma NOS
M Skin and subcutaneous tissue diseases
(*skin, subcutaneo*)
M01z Boil / Furuncle (*boil*)
M02 Cellulitis and abscess of finger/toe
M03 Other cellulitis and abscess
M05 Impetigo (*impetigo*)
M06 Pilonidal cyst / sinus (*cyst, pilonidal,
sinus*)
M071 Pyogenic granuloma (*granuloma,
pyogenic*)
M08 Cellulitis (*cellulitis*)
M0z Skin and subcutaneous tissue infection
NOS
M101 Seborrhoeic Dermatitis (*dermatitis,
seborrhoei*)
M110 Nappy Rash (*dermatitis, napkin*)
M111 Atopic Dermatitis / Eczema (*atopic,
dermatitis, eczema*)
M112 Infantile eczema (*infantile, eczema*)
M12 Contact Dermatitis
M12z1 Eczema NOS
M151 Erythema Multiforme (*erythema,
multiforme*)
M152 Erythema Nodosum (*nodosum*)
M153 Rosacea (*rosacea*)
M1530 Acne rosacea (*acne*)
M154 Lupus Erythematosus (*erythemato,
lupus*)
M16 Psoriasis (*psoriasis*)
M160 Psoriatic arthropathy (*arthropath,
psoriatic*)
M161 Other psoriasis (NB: the Read code
for clinical audit groups, as well as M16y
Other psoriasis and similar disorders, and
M16z Psoriasis and similar disorders NOS)
M180 Pruritus ani (*ani, pruritus*)
M181 Pruritus of genital organs (*genital*)
M181.11 Pruritus vulvae (*pruritus, vulvae*)
M18z Pruritus NOS
M20 Corns and Callouses
M21z1 Skin tag (*skin, tag*)
M230 Ingrowing toenail (*ingrowing*)
M2610 Acne vulgaris (*acne, vulgaris*)

M262 Sebaceous cyst - wen (*cyst, sebaceous, wen*)
 M28 Urticaria (*urticaria*)
 M2yz Other skin and subcutaneous tissue disease NOS
 PH310 Birthmark, unspecified (*birth, mark*)
 R021 [D] Rash and other nonspecific skin eruption (*eruption, skin, rash*)
 R022 [D] Local superficial swelling, mass or lump (*lump, swelling*)
 SD Insect bites, non-venomous (*insect*)
 TE640 Insect bite NOS (*bite, insect*)
 66I Skin disorder monitoring (*skin*)
 ZV766 [V] Screening for malignant neoplasm of skin

Alcohol Read Terms

136..00 Alcohol consumption
 1361.00 Teetotaler
 1361.11 Non drinker alcohol
 1361.12 Non-drinker alcohol
 1362.00 Trivial drinker - <1u/day
 1362.11 Drinks rarely
 1362.12 Drinks occasionally
 1363.00 Light drinker - 1-2u/day
 1364.00 Moderate drinker - 3-6u/day
 1365.00 Heavy drinker - 7-9u/day
 1366.00 Very heavy drinker - >9u/day
 1367.00 Stopped drinking alcohol
 1368.00 Alcohol consumption unknown
 1369.00 Suspect alcohol abuse - denied
 136A.00 Ex-trivial drinker (<1u/day)
 136B.00 Ex-light drinker - (1-2u/day)
 136C.00 Ex-moderate drinker - (3-6u/d)
 136D.00 Ex-heavy drinker - (7-9u/day)
 136E.00 Ex-very heavy drinker-(>9u/d)
 136F.00 Spirit drinker
 136G.00 Beer drinker
 136H.00 Drinks beer and spirits
 136I.00 Drinks wine

136J.00 Social drinker
 136K.00 Alcohol intake above recommended sensible limits
 136L.00 Alcohol intake within recommended sensible limits
 136M.00 Current non drinker
 136N.00 Light drinker
 136O.00 Moderate drinker
 136P.00 Heavy drinker
 136Q.00 Very heavy drinker
 136Z.00 Alcohol consumption NOS
 1462 H/O: alcoholism (*alcoholism*) *
 63C7 Maternal alcohol abuse (*alcohol*)*
 6792 Health education – alcohol (*alcohol*)
 67A5 Pregnancy alcohol advice (*alcohol*)
 68S Alcohol consumption screen (*alcohol*)
 8BA8 Alcohol detoxification (*alcohol, detoxifica*)*
 8CE1 Alcohol leaflet given (*alcohol*)
 8G32 Aversion therapy – alcoholism (*alcohol*)*
 E010 Alcohol withdrawal delirium (*delirium*)*
 E012 Other alcoholic dementia *
 E23 Alcohol dependence (*alcohol, dependence*) *
 E230 Acute alcoholic intoxication in alcoholism (*alcoholic, intoxicati*) *
 E231 Chronic alcoholism*
 E2501 Nondependent alcohol abuse, continuous*
 J612 Alcoholic cirrhosis of liver (*alcoholic, cirrhosis*)*

Smoking Read Terms

137 Tobacco consumption
137.11 Smoker - amount smoked
1371 Never smoked tobacco
1372 Trivial smoker - <1 cig/day

1373 Light smoker - 1-9 cigs/day
1374 Moderate smoker - 10-19 cigs/day
1375 Heavy smoker - 20-39 cigs/day
1376 Very heavy smoker - 40+ cigs/day
137C Keeps trying to stop smoking
137D Admitted tobacco cons untrue?
137G Trying to give up smoking
137J Cigar smoker
137H Pipe smoker
137M Rolls own cigarettes
137P Cigarette smoker
137Q Smoking started
137R Current smoker
137V Smoking reduced
137X Cigarette consumption
137Y Cigar consumption
137Z Tobacco consumption NOS
137a Pipe tobacco consumption
137b Ready to stop smoking
137c Thinking about stopping smoking
137d Not interested in stopping smoking
137e Smoking restarted
137f Reason for restarting smoking
137g Cigarette pack-years
13p Smoking cessation milestones

Smoking cessation advice

6791 Health ed. - smoking
67A3 Pregnancy smoking advice
8B2B Nicotine replacement therapy
8CAL Smoking cessation advice
8H7i Referral to smoking cessation advisor
8HTK Referral to stop smoking clinic
9N2k Seen by smoking cessation advisor
9N4M DNA - Did not attend smoking cessation advice
9OO Anti-smoking monitoring admin

Cervical Smear Read Codes

See also list of Read codes in Chapter 31 Smears and Recall. This list also includes smear exceptions such as hysterectomy.

4K22 Cervical smear: negative
4K23 Cerv. smear:mild dyskaryosis
4K24 Cerv. smear:severe dyskaryosis
4K25 Cerv. smear: severe dysk.?inv.ca.
4K26 Cervical smear: ?gland neopl.
4K27 Cervical smear:atrophic change
4K28 Cerv.smear: mod.dyskaryosis
4K29 Cerv.smear: borderline changes
4K2A Cervical smear endocervical cells present
4K2C Smear NAD - no endocervical cells present
4KA1 Vaginal vault smear negative
4KA3 Vaginal vault smear-atrophic
4KA4 Vaginal vault smear abnormal
6852 Ca Cervix Screen – Offered
6854 Ca Cervix Screen – Wanted
6856 Ca cervix screen - up to date
6859 Ca cervix - screen done
685B Ca cervix screen normal
685C Ca cervix screen abnormal
685D Ca cervix screen + fee claim
685E Cervical Smear Status Unknown
685F Cervical Smear Due
685H No smear- benign hysterectomy
685I No smear-amputation of cervix
685K No smear - no cervix
685L Cervical smear refused
7E040 Abdominal hysterocolpectomy and excision periuterine tissue
7E042 Abdominal hysterocolpectomy NEC
7E043 Total abdominal hysterectomy NEC

7E046 Radical hysterectomy

7E2A3 Vaginal vault smear

7E049 Tot abdom hysterectomy and BSO
- bilat salpingophorect

ZV762 [V] Screening for malignant
neoplasm of cervix

7E05 Vaginal excision of uterus

7E2A2 Papanicolau smear NEC

FAQs - Read dictionary - How do I...

... display a list of Read keywords if the wrong match appears?

See Find and use the correct Read term on page 6.

... look at the Read hierarchy?

Read hierarchy means the Read terms listed by Read code. Each chapter is concerned with different topics - codes beginning with a letter A-Z are mostly by systems such as cardio-vascular, respiratory etc, while codes beginning with 1-9 are varied, eg 1 Symptoms, 2 Examination, 6 Preventive procedures, 9 Administration. When at the Read dictionary screen, click on **Display by Hierarchy** then open the chapters and find your way down the levels. See page 7.

... search from the Read formulary instead of the whole Read dictionary?

On the Read dictionary screen (press F3 when the cursor is in the Read Term Add window), if **Display from Formulary** is ticked, then only Read formulary terms are listed. If unticked, the whole dictionary is shown. In Security - Edit User, a system manager can set each user to select from either the Read formulary or from the full dictionary (though unchecking or checking the Display from Formulary box at the time of selection can swap). A user can also specify whether a Keyword or Code prompt is their default, though again, they can swap at the time of selection.

... enter a Read code instead of a keyword?

In any Read Term Add window, enter a # sign before the Read code, eg #68C3 for Asthma screening. Then either press Enter to find the term matching that code, or press F3 to go the hierarchy part of the Read dictionary, at the code you typed in. **Note that Read codes are case sensitive.**

... update the Read formulary within Consultation Manager and add additional keywords?

On the Read dictionary screen, find the Read term you want to add to the practice Read formulary. Then right click on this line for an Add to Formulary screen. You can at this time add any additional keywords you like - type this in New Keyword, then click on Add Keyword. Then OK. Note that keywords must be at least two characters and not more than 10. See page 12.

... find the following Read terms?

A list of selected Read terms is shown from page 30.

Minor surgery done - cautery - 9876.

Non-insulin dependent diabetes - C109.

Acute renal failure - K04..

Blood withdrawal for testing - 4142. Blood sample ->Haematol.Lab, or 41D0. Blood sample taken

Ear syringing - 73050 Syringe ear to remove wax

Failed encounter (e.g. DNA) - 9N4.. Failed encounter, or 9N4H. DNA hospital appointment

Epilepsy - F25 epilepsy, or 667.. Epilepsy monitoring

... find out what some of the Read terminology means such as [D], NOS, [X]?

See Useful Read Terminology on page 30.

... add the same Read code to a group of patients?

You do this in the Patient Groups module, currently by adding a recall. Presuming you already have created your group of patients from a search or audit, go into Patient Groups. Find the group and highlight it. Click on Generate Recalls for this Group. Under Add Recall to Medical History, click on the Create button. Add the Read term in Read Term for Recall Trigger, and you have to put in a recall date, eg 1M (one month). Then click OK.