

---

## **IM&T DES for Data Accreditation for practices which had a practice “split”**

Practices have to use MIQUEST queries to extract data for the IM&T DES and using the PRIMIS+ tool called CHART, upload this information to CHART Online in order to achieve accreditation.

A number of practices have informed us that MIQUEST may produce incorrect results when the queries are generated on any practice that had a practice split in the past. MIQUEST may extract data that does not link to a patient when producing a response.

INPS have produced an additional MIQUEST query called INPS01.hql that will run in conjunction with the IM&T DES queries to ensure that only valid clinical data for that practice is extracted.

---

NOTE: This additional query is only needed for practices where INPS have performed a practice “split” in the past. All other practices will get the correct data extracted using the MIQUEST queries for IM&T DES CHART software as described in the user guides.

---

### **How to use the additional MIQUEST query**

The following will explain how to edit the new DES query provided, that will enable all practices with a split to extract only valid information.

1. Refer to the IM&T DES User guide for Vision which can be found on the INPS website <http://www.inps3.co.uk/anm/anmviewer.asp?a=790&z=87>. This will set out the procedure on how to access the PRIMIS+ website and to download CHART. You will need to download CHART in order to create the MIQUEST queries that will extract the data from Vision.
2. Once you have downloaded and installed the CHART software, refer to the user guides which are available on the PRIMIS+ website <http://www.primis.nhs.uk/data-accreditation/> for assistance in creating the MIQUEST queries and configuring the CHART software for your practice.
3. Once the installation and configuration is completed, open CHART software. It should look like the screenshot on the next page.
4. Download the new IM&T DES audits from the same site on the INPS website. If you click on Run, this will extract and place them automatically in c:\chart\imtdes\queries.
5. Download the INPS01 query and extract by selecting Run - this will automatically place this in a new folder c:\chart\imtdes\queries\INPS01.
6. Insert a floppy disk in the a:\ drive of the local machine.

Microsoft Excel - CHART.xls [Read-Only]

The University of Nottingham

PRIMIS+  
CHART

Care and Health Analysis in Real Time

### Running an Audit

- Select Query Library
- Tick to copy out full library of queries   
 Or Select Query to run  

  
[Click for description of query](#)  
 Reference Date 24/07/2007  
 Insert clean disk into A: drive  
[3. Copy queries to floppy](#)
- Remove the Disk and run using MIQUEST on the practice computer

### Display Responses

- Copy the responses to a floppy disk
- Put the Disk back in this computer
- [Click here to view new results](#)  
or  
[Click to view archived results](#)

[PRIMIS support for IM&T DES](#)

[Close Application and Databooks](#)

## Step by Step

- Under Select Query Library, choose IM&T DES E-audit tools.
- Place a tick in the box for Tick to copy out a full library of queries.
- Click on Copy queries to floppy.
- A message will be displayed asking if all the library queries should be copied to disk. Click on Yes.

1. Select Query Library

2. Tick to copy out full library of queries   
 Or Select Query to run  

  
[Click for description of query](#)  
 Reference Date 24/07/2007  
 Insert clean disk into A: drive  
[3. Copy queries to floppy](#)

1. Copy the responses to a floppy disk

2. Put the Disk back in this computer

3. [Click here to view new results](#)  
or  
[Click to view archived results](#)

[PRIMIS support for IM&T DES](#)

[Close Application and Databooks](#)

**CHART**  
 Are you sure you want to copy all the library queries to disk?

- Another message will be displayed where you can choose to have anonymised data or not. Click YES to extract NAMED PATIENT data or NO for Anonymised data.

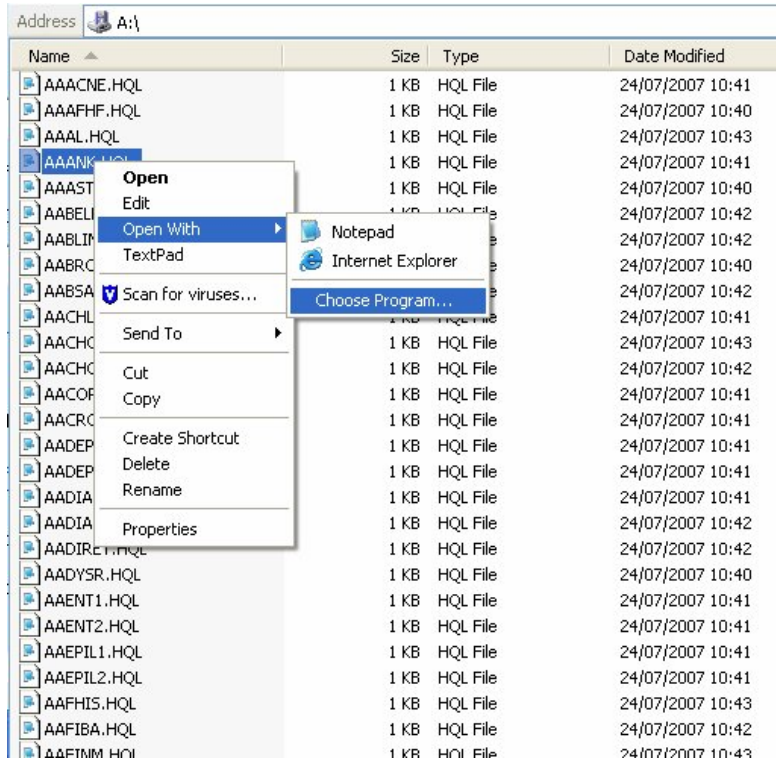
The screenshot shows the 'IM&T DES E-audit tools' interface. On the left, there are instructions: '1. Select Query Library' with a dropdown menu set to 'IM&T DES E-audit tools'; '2. Tick to copy out full library of queries' with a checked checkbox; 'Or Select Query to run' with a dropdown menu set to 'Drug to Disease Group 1'; 'Reference Date' set to '24/07/2007'; and 'Insert clean disk into A: drive'. On the right, there are instructions: '1. Copy the responses to a floppy disk', '2. Put the Disk back in this computer', and '3. Click here to view new results' with a link. Below these are links for 'Click to view archived results' and 'Close Application and Databooks'. A 'Microsoft Excel' dialog box is overlaid in the center, containing a warning icon and the text: 'Click 'YES' to extract NAMED PATIENT data or 'NO' for ANONYMISED data'. It has 'Yes' and 'No' buttons.

- Once you have selected the above, the queries will be copied to the floppy disk in the drive. Once completed, a message will be displayed as follow: Queries successfully copied to A:\ folder. PLEASE NOTE: Reference dat is set to 24/07/2007. The query set will extract [named][anonymised] data.

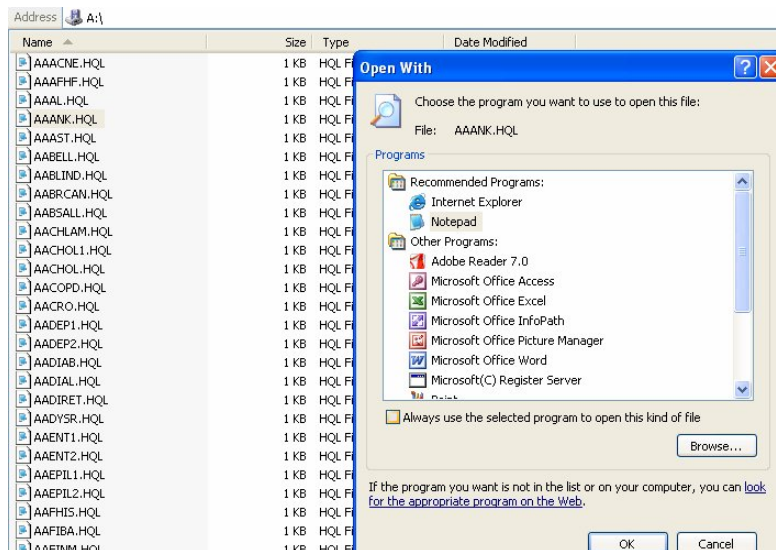
This screenshot is identical to the previous one, showing the same interface and instructions. However, the 'Microsoft Excel' dialog box now displays an information icon and the text: 'Queries successfully copied to A:\ folder. PLEASE NOTE: Reference date is set to 24/07/2007. This query set will extract named data'. It has an 'OK' button.

- The queries are now saved onto a floppy disk, and CHART will have customised the queries with the practice ID.
- We now need to add in the INPS query which will prevent the anomalies for practices which had a split.

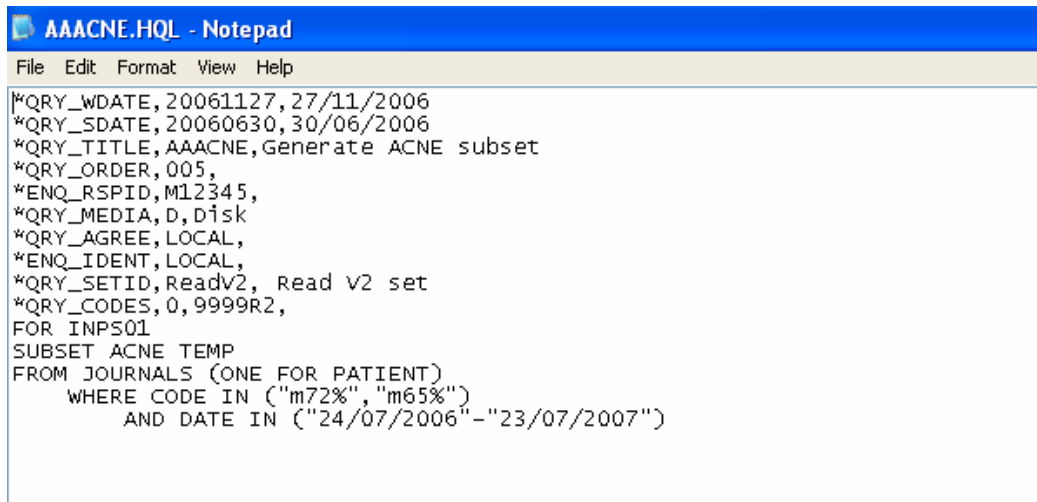
9. Browse to the queries saved on the a:\ drive. You should see 131 queries saved in the format \*.HQL. To extract the information needed, one of the queries needs to be opened.
10. To do this, right click on any of the queries saved on the floppy drive. The file will not be associated with any program on your computer, so choose Open With and Choose Program.



11. WINDOWS will give you an option to choose the application associated with the file. Choose NOTEPAD, remove the tick from Always use the selected program to open this kind of file and click on OK.

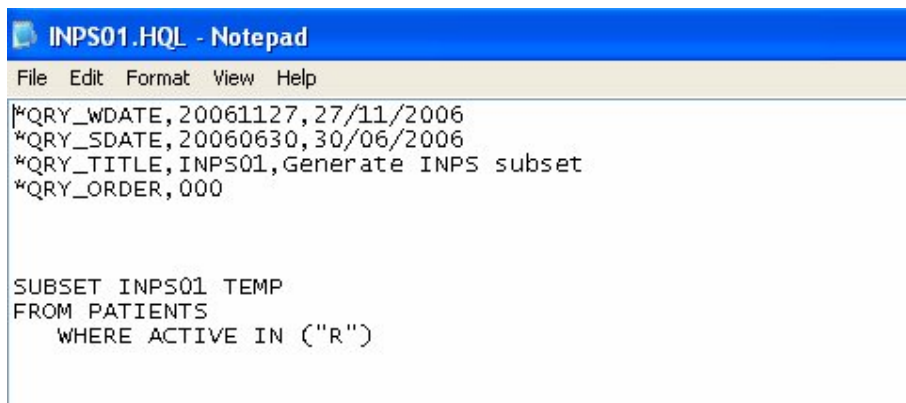


12. Once you opened the query, you should be able to see the information in the query:



```
AAACNE.HQL - Notepad
File Edit Format View Help
|*QRY_WDATE,20061127,27/11/2006
*QRY_SDATE,20060630,30/06/2006
*QRY_TITLE,AAACNE,Generate ACNE subset
*QRY_ORDER,005,
*ENQ_RSPID,M12345,
*QRY_MEDIA,D,Disk
*QRY_AGREE,LOCAL,
*ENQ_IDENT,LOCAL,
*QRY_SETID,Readv2, Read V2 set
*QRY_CODES,0,9999R2,
FOR INPS01
SUBSET ACNE TEMP
FROM JOURNALS (ONE FOR PATIENT)
  WHERE CODE IN ("m72%", "m65%")
    AND DATE IN ("24/07/2006"-"23/07/2007")
```

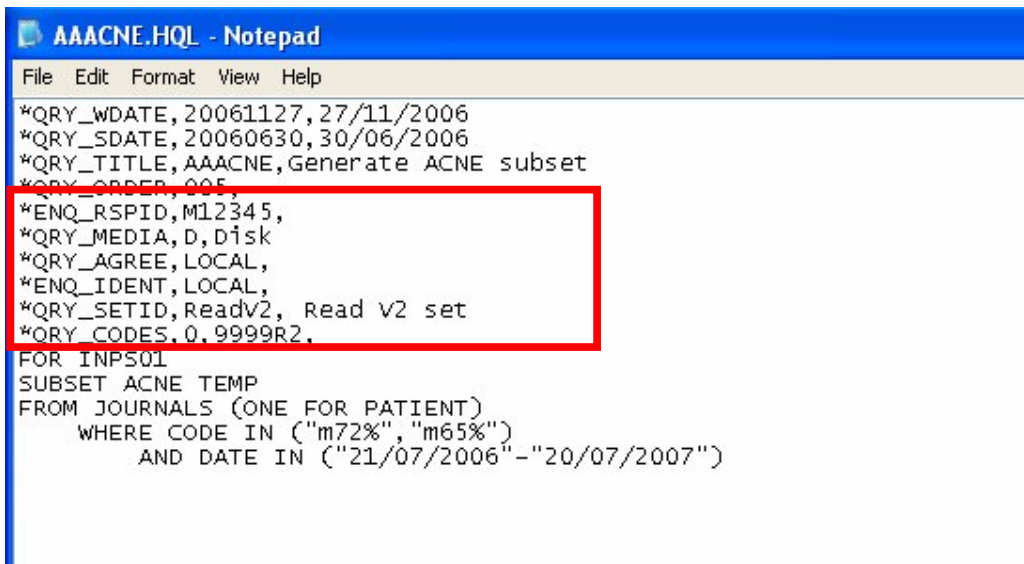
13. At the same time, open the INPS (INPS01.hql) query provided to you from c:\chart\imtdes\queries\INPS01\INPS01.hql, using the same method as above.



```
INPS01.HQL - Notepad
File Edit Format View Help
|*QRY_WDATE,20061127,27/11/2006
*QRY_SDATE,20060630,30/06/2006
*QRY_TITLE,INPS01,Generate INPS subset
*QRY_ORDER,000

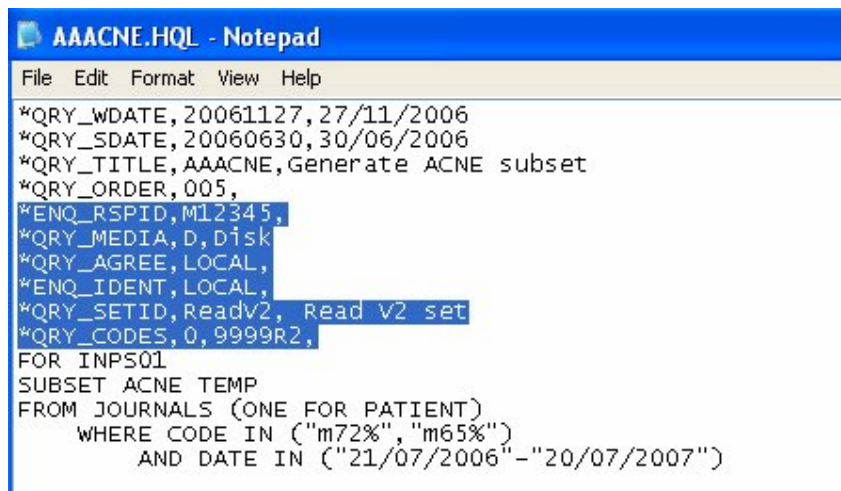
SUBSET INPS01 TEMP
FROM PATIENTS
  WHERE ACTIVE IN ("R")
```

14. The INPS query has to be customised in order to be added to your current set of queries. For this, a portion of the header part of a query needs to be copied onto the INPS query. Refer to the IM&T DES query that is open.



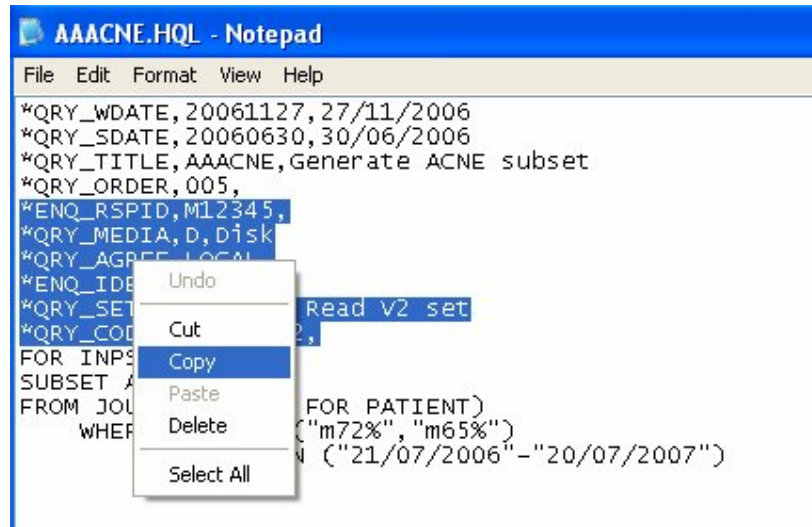
```
AAACNE.HQL - Notepad
File Edit Format View Help
*QRY_WDATE,20061127,27/11/2006
*QRY_SDATE,20060630,30/06/2006
*QRY_TITLE,AAACNE,Generate ACNE subset
*QRY_ORDER,005,
*ENQ_RSPID,M12345,
*QRY_MEDIA,D,Disk
*QRY_AGREE,LOCAL,
*ENQ_IDENT,LOCAL,
*QRY_SETID,ReadV2, Read V2 set
*QRY_CODES,0,9999R2,
FOR INPS01
SUBSET ACNE TEMP
FROM JOURNALS (ONE FOR PATIENT)
  WHERE CODE IN ("m72%", "m65%")
  AND DATE IN ("21/07/2006"-"20/07/2007")
```

15. The area highlighted above refers to the selected part of the header that will have to be copied onto the INPS01 query. Highlight the above lines by selecting the first one (\*ENQ\_RSPID,...), then holding the left mouse button down, drag the mouse to the last line in the header – the line will be displayed as \*QRY\_CODES. The header information will now be highlighted as below

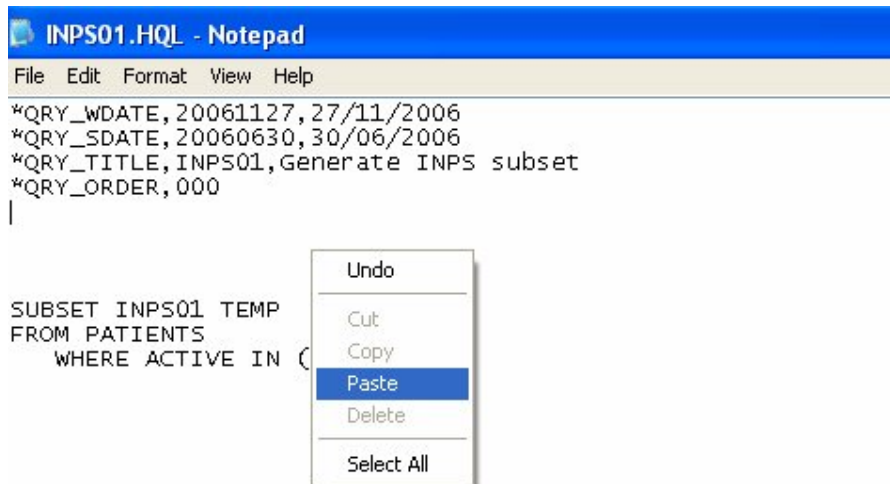


```
AAACNE.HQL - Notepad
File Edit Format View Help
*QRY_WDATE,20061127,27/11/2006
*QRY_SDATE,20060630,30/06/2006
*QRY_TITLE,AAACNE,Generate ACNE subset
*QRY_ORDER,005,
*ENQ_RSPID,M12345,
*QRY_MEDIA,D,Disk
*QRY_AGREE,LOCAL,
*ENQ_IDENT,LOCAL,
*QRY_SETID,ReadV2, Read V2 set
*QRY_CODES,0,9999R2,
FOR INPS01
SUBSET ACNE TEMP
FROM JOURNALS (ONE FOR PATIENT)
  WHERE CODE IN ("m72%", "m65%")
  AND DATE IN ("21/07/2006"-"20/07/2007")
```

16. Right mouse click on the highlighted area and choose Copy.



17. Select the INPS01 query, and highlight the line below the line QRY\_ORDER,000, right click and choose Paste.



18. The INPS01 query will now appear with the same header as all the other queries on your floppy and should look like the following example – bearing in mind that every practice will have their specific information added to the query. Please ensure that no additional lines are visible on the query as these will prevent the completion.

19. The INPS query has to be saved to the a:\. Click on File, Save As and browse to the a:\ drive and click on Save.
20. The query set is now complete and ready to be run in MIQUEST. Open Vision and MIQUEST and follow the instructions in the IM&T DES User Guide.