

# GPRD - LEPIS

Identification of patients eligible for medical trials



### Table of Editions and Contents

<b>Date</b>	<b>Version</b>	<b>Contents</b>	<b>Output</b>
05/09/11	001	First draft (HDOO)	PDF
12/09/11	002	Review ESTU	PDF
04/10/11	003	Review ESTU	PDF
05/10/11	004	Review JJAF and TBIC	PDF
10/10/11	005	Review DOKE change to wording page 2 and clarification of extract file on page 8	PDF

Copyright © INPS Ltd 2011

---

---

# Contents

---

<b>LEPIS</b>	<b>1</b>
<b>Introduction</b>	<b>1</b>
<b>Overview</b>	<b>1</b>
<b>What you need to do...</b>	<b>2</b>
<b>Enabling LEPIS</b>	<b>3</b>
<b>Using LEPIS</b>	<b>7</b>
<b>LEPIS – Further information</b>	<b>8</b>



# LEPIS

---

## Introduction

LEPIS is a third-party piece of software, provided by General Practice Research Database (GPRD) in collaboration with Kings College, London which assists in the identification of patients eligible for research studies and the capture of the relevant data.

---

**Note** – No data is recorded to Vision as part of this process

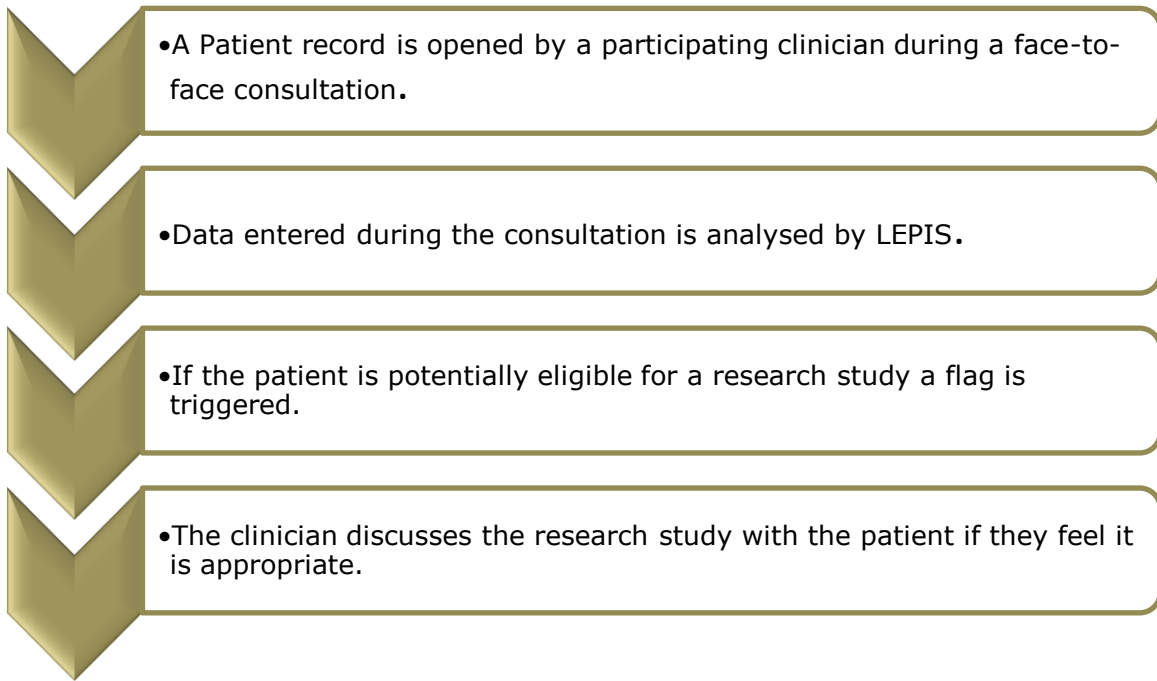
---

---

## Overview

Once enabled, LEPIS flags up patients who are potentially eligible for research participation. This only happens during face to face consultations within Consultation Manager. Face to face consultations include:

- Clinic
- Night Visit Practice
- Out of Hours Non Practice
- Emergency Consultation
- Walk-in Centre
- Minor Injury Service
- Follow-up/Routine Visit
- Out of Hours Practice
- Surgery Consultation
- Casualty Attendance
- Co-op Surgery Consultation



*The LEPIS Process*

---

## What you need to do...

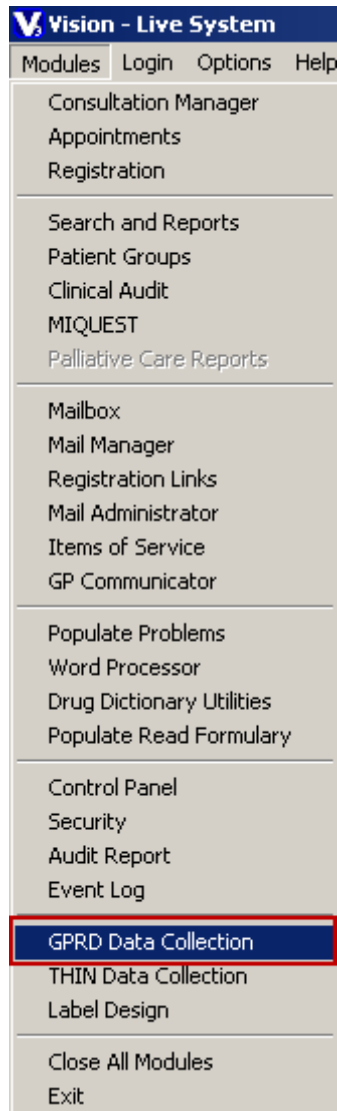
- Enable LEPIS. See “[Enabling LEPIS](#)” on page 3.
- Opt out any staff that do not want to participate in LEPIS. See “[Enabling LEPIS](#)” on page 3.
- Contact GPRD to install the LEPIS application on the workstations of those members of staff who have been authorised to use it.

---

## Enabling LEPIS

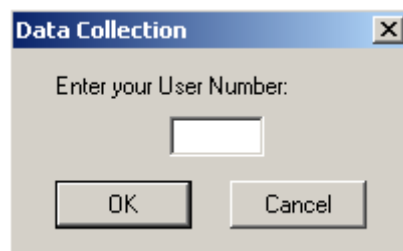
In order to utilise the LEPIS functionality, the following must be set up:

1. From the Vision main menu, select **Modules – GPRD Data Collection**.



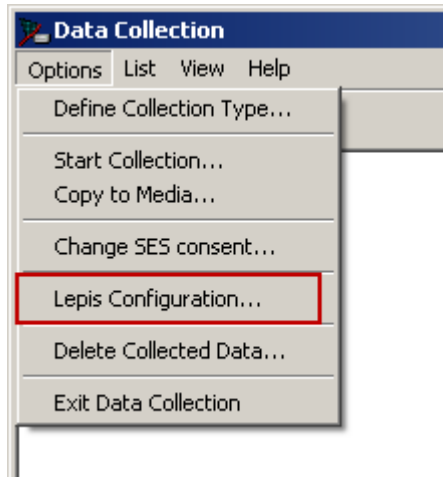
*Modules – GRPD Data Collection*

2. A Data Collection message is displayed, this should already be completed with your Vision User number, if not, enter it and then click on **OK**.



*Data Collection with no User number entered*

3. From the Data Collection screen, select **Options – LEPIS Configuration**.



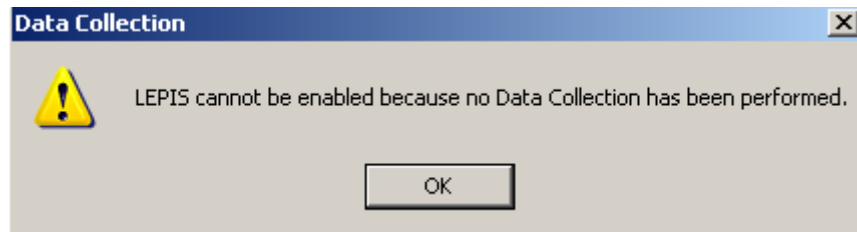
*Data Collection – Options – LEPIS Configuration*

4. Click into the LEPIS Enabled tick box.



*LEPIS Configuration screen*

5. If you see the following message please contact GPRD via their website [GPRD Enquiry Form](#).

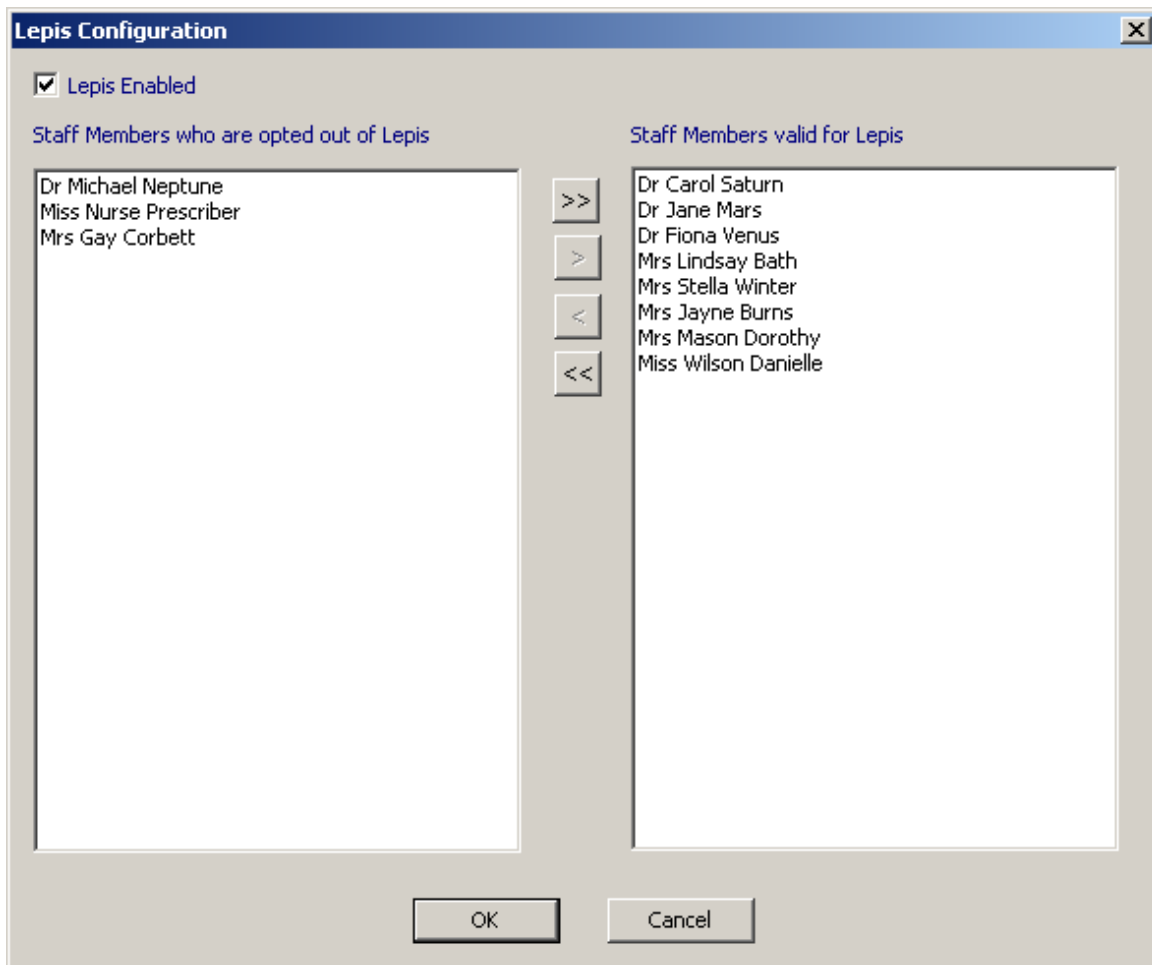


*LEPIS cannot be enabled message*

6. All clinical staff eligible for LEPIS are opted in by default. Eligible staff includes the following roles:

- Senior Partner
- Assistant
- Non-commercial local rota of less than 10GPs
- Locum
- Consultant
- Practice Nurse
- Community Nurse
- Community Psychiatric Nurse
- Pharmacist
- Non-qualified Dispenser
- Chiropodist
- Dietician
- Osteopath
- Hospital Nurse
- School Nurse
- Contact Tracing Nurse
- Chiropractor
- Homeopath
- Salaried Partner
- Speech Therapist
- Clinical Practitioner Access Role
- Partner
- Associate
- Commercial Deputising service
- GP Registrar
- Sole Practitioner
- Health Visitor
- Midwife
- Social Worker
- Dispenser
- Physiotherapist
- Dentist
- Counsellor
- Other Health Care Professional
- Community Medical Officer
- Health Education Officer
- Stomatherapist
- Acupuncturist
- Mental Handicap Nurse
- Occupational Therapist
- GP Retainer
- Health Professional Access Role

7. If a member of staff does not wish to have LEPIS enabled, double click on their name under **Staff Members valid for Lepis**, they then appear under **Staff Members who are opted out of LEPIS**.



*LEPIS Configuration showing staff opted in and out of LEPIS*

8. Click **OK** to save and close.

---

## Using LEPIS

Once LEPIS is installed (see "Enabling LEPIS" on page 3) it starts up when your work station is turned on, the medical case icon  is displayed in your system tray.

1. From **Vision - Consultation Manager**, select a patient.
2. Providing you are not opted out for LEPIS, and you have opened a face to face consultation an extract file is created.

The extract file contains:

- Vision Practice Number.
- Consultation Date and Time.
- Staff Identifier and Role.
- Patient Vision Identifier, Date of Birth and Sex.
- Any **new** Therapy you add to Consultation Manager.
- Any **new** Read codes you add to Consultation Manager.

---


**Note** – Only new data is captured for LEPIS, Edits and Deletes to existing data are not captured.

---

3. The data within the extract file is analysed by the LEPIS utility. If the patient qualifies for a patient trial, a pop-up notification is displayed in the bottom right hand corner of the screen.



*Patient Eligible for Trial notification*

4. If you are not interested in any trials, click  to close the pop-up. Or...
5. If you are interested in seeing the available options, click on the pop-up.
6. The **LEPIS:Patient Eligible for Trial** screen is displayed.



*LEPIS:Patient Eligible for Trial*

Select from the following options:

- **More Info** – Information regarding the suggested trial displays.
- **Recruit Patient** – Opens a web page to recruit the patient.
- **Patient Wants time to Think** – Sets the notification to appear next time the patient is selected.
- **Patient Not Interested** – The patient will not be suggested for this trial again.
- **Do not Disturb** me for 2 Hours – LEPIS is deactivated for two hours.
- **Patient Not Eligible** - The patient will not be suggested for this trial again.

Or from the **Other Action** list (This list currently only contains one option):

- Patient not interested in ever participating in trials – If this is selected, click on **Perform** to select.

7. Select **Close for this Patient** to close this screen and continue with your consultation.

---

Remember – No data is recorded to Vision as part of this process and the extract file is not permanently stored.

---

## LEPIS – Further information

For further information about how to use LEPIS please refer to the [GPRD website](#).