

Swine Flu Extract - Scotland

INPS



Table of Editions and Contents

Date	Version	Contents	Output
24.08.09	280 – 2296	Setup: Setting the Extract Schedule, Running the Extract Manually, checking the log file. Extract details	.Docx
14.09.09	280 -2296	Comments from AYOU, QMT and Development. Data entry date not event date. Sent for Pilot website.	PDF

Copyright © INPS Ltd 2009

Contents

SWINE FLU EXTRACT - SCOTLAND	2
Overview	2
What you need to do...	2
Setting Up	2
Adding Influenza Data	3
What data is extracted?	3
Qualifying Data	2
Managing the Swine Flu Extract	5
Setting up the Automatic Extract	6
Running the Manual Extract	10
Checking for Errors – Log File	11

Swine Flu Extract - Scotland

Overview

At the request of Health Protection Scotland (HPS) and the Chief Medical Officer, INPS has created functionality in Vision which allows for the extract of statistical data for Swine Flu for Scottish practices.

Once enabled, an extract of pre-defined influenza and acute respiratory illness (ARI) data from the previous day is automatically compiled and transmitted from your Vision system to HPS using your existing eLinks communications.



Vision – eLinks – Health Protection Scotland

Future daily extracts of information reflect the relevant influenza and acute respiratory infection information entered during each 24 hr period from midnight to midnight. Thus, each extract is a snapshot of that day's record of newly entered influenza information and allows data to be collated and analysed as quickly as possible by HPS.

The data collected does not contain any patient details, only statistical information which includes the following Read coded areas in an age/sex banded table:

- Suspected Flu
- Influenza Like Illness (ILI)
- All Acute Respiratory Illness (ARI)

Any file failures produce a log file containing error messages. See "Checking for Errors – Log File" on page 11. It is also possible to run the extract process manually for a defined period if required. See "Running the Manual Extract" on page 10.

What you need to do...

- Ensure that you have the Swine Flu Extract software enabled on your system. This should be actioned by your Partners/INPS VES team.
- Set up the automatic extract as a scheduled task in GP Communicator. See "Setting up the Automatic Extract" on page 6. For VES practices in Orkney, this will be done by the INPS VES team.

Note – Setting up the scheduled task implies your practice's consent to participating in the Swine Flu data extract programme.

- Make sure you are using the INPS Swine Flu guidelines to record Swine Flu data. See "Adding Influenza Data" on page 3.
- Check the log file for extract error logs on the GP Communicator on a daily basis. See "Checking for Errors – Log File" on page 11.
- Familiarise yourself on how to run a manual extract. See "Running the Manual Extract" on page 10.

Setting Up

Before you can set up the Swine Flu automatic extract process, you must have the required software installed on your system. This is installed by your Partners team or, if you are on the Orkney VES, the INPS VES team will ensure installation and schedule set up.

Adding Influenza Data

Remember that you can add influenza data using the INPS Swine Flu Guideline which can be downloaded from www.inps.co.uk. The Read codes in this guideline directly correspond with the Read codes that are extracted as part of the Swine Flu Scotland extract.

SWINE INFLUENZA

Data required for Scotland 'Flu Collection

Suspected Swine 'Flu (Required for Scotland 'Flu Collection)

Last matching history entry
17/08/2009 Influenza Dr Hugh Geoghegan
Add history entry

Flu Recording for Scottish report To improve monitoring of the number of patients with flu-like illness presenting to general practices, the Scottish Government have requested code all flu-like illness which might indicate H1N1 virus infection as H27.. Influenza.

Diagnosis of "Influenza Like Illness" (Required for Scotland 'Flu Collection)

The CMO has identified a number of Read Codes that will be used to signify an "Influenza Like Illness" and will be collected from sites in the daily reporting.

Last matching history entry
17/08/2009 [X]Influenza+oth respiratory manifestatns,virus not identifi Dr Hugh Geoghegan
Add history entry

Influenza Influenza with other manifestations Influenza or Pneumonia

Encephalitis due to Influenza - Virus identified Encephalitis due to Influenza - Virus not identified Acute Myocarditis - influenzal

'Flu + other respiratory manifestations - 'flu virus identified 'Flu + other respiratory manifestation - 'flu virus NOT identified

Flu + other respiratory manifestations, virus NOT identified Influenza + other manifestations, virus NOT identified

Diagnosis of "Acute Respiratory Illness" (Required for Scotland 'Flu Collection)

The CMO has identified a number of Read Codes that will be used to signify an "Acute Respiratory illness" and will be collected from sites in the daily reporting.

Last matching history entry
17/08/2009 Influenza Dr Hugh Geoghegan
17/08/2009 [X]Influenza+oth respiratory manifestatns,virus not identifi Dr Hugh Geoghegan
Add a history entry - Acute Respiratory diseases
Add a history entry - Pneumonia and influenza
Add a history entry - Bronchitis
Add a history entry - Acute Respiratory Infections
Add a history entry - COPD with acute exacerbation

INPS Swine Flu Guideline

What data is extracted?

The extract file contains a count of the following data with a data entry date (i.e. not event date) in the last 24 hours (midnight to midnight) which is plotted on an age/sex banded table:

Extract Table

The extract file contains the following information:

- HB Cipher
- Practice Code
- Extract Type
- Extract From Date
- Extract To Date
- Practice name
- Practice Address
- Software Version
- Criteria Version
- Influenza data (see below)

Influenza related data is presented in an age/sex banded table as well as a table displaying an overall total. However, **you will not be able to view the contents of the extracted file at any stage.** Example as follows:

Age	Male/ Female	Suspected 'flu code H27..	Influenz a like illness -ILI	All Acute respiratory illness - ARI	Future Use	Practice Population
<1	M					
1-4	M					
5-14	M					
15-44	M					
45-64	M					
65-74	M					
>75	M					
<1	F					
1-4	F					
5-14	F					
15-44	F					
45-64	F					
65-74	F					
>75	F					
All ages	All sexes					

Qualifying Data

Qualifying data under each column in the extract table is as follows:

Practice Population

Practice population includes all active patients (both Applied and Permanent) and those in Temporary Resident registration categories, regardless of whether their TR status has expired at the time the report is run. Registration criteria is not applied to the rest of the extracted data, e.g. if a transferred out patient has a Read code of #H27 Influenza, they will be counted in the Suspected Influenza column but not the practice population column.

Note - For manual extracts for time periods before the last 24 hours, the practice population data is calculated as at the last day of the period date range.

Suspected Flu

Counts all patients with the Read code **H27. Influenza** with a data entry date during the period of the report (i.e. last 24 hours if running automatic extract). Patients are counted for this category whether or not they have another Influenza Like Illness (ILI) or Acute Respiratory Infection (ARI) code entered during the period.

Influenza Like Illness (ILI)

Counts any of the following Read codes entered during the period of the report:

Read code	Term
F030A	Encephalitis due to influenza-virus identified
F0308	Encephalitis due to influenza-specific virus not identified
G5203	Acute myocarditis – influenzal
H27%	Influenza
H2y..	Influenza with other manifestations
H2z..	Pneumonia or influenza NOS
Hyu04	[X]Influenza with other respiratory manifestations, influenza virus identified
Hyu05	[X]Influenza with other manifestations, influenza virus identified
Hyu06	[X]Influenza with other respiratory manifestations, virus not identified
Hyu07	[X]Influenza with other manifestations, virus not identified

Only the specific code is counted except where indicated by a %, which includes the Read code hierarchy.

All Acute Respiratory Illness (ARI)

Counts any of the following Read codes with a data entry date during the period of the report:

Read code	Term
H0%	Acute respiratory infections
H2%	Pneumonia and influenza
H30%	Bronchitis unspecified
H3y0.	Chronic obstruct pulmonary dis with acute lower resp infection
H3y1.	Chronic obstruct pulmonary dis with acute exacerbation unspec
Hyu0%	[X]Acute upper respiratory infections
Hyu1%	[X]Other acute lower respiratory infections

Only the specific code should be is counted except where indicated by a % which includes the Read code hierarchy.

Note - Read codes entered using problems are also included in the ARI criteria. However, if a qualifying Problems record has an End Date, it is not counted.

Managing the Swine Flu Extract

The standard extract file containing Swine Flu data with a data entry date in the last 24 hours is automatically produced on a daily basis and is transmitted electronically to HPS via eLinks. Before this can run, you must set up a scheduled process in GP Communicator. See "Setting up the Automatic Extract" on page 6.

Note – VES practices in Orkney will have the automatic schedule set up for them by the INPS VES team.

These 24 hour extracts allow data from the previous day to be collated and analysed as quickly as possible by HPS. You can also generate an extract file for a specified period by generating a manual extract (see "Running the Manual Extract" on page 10).

Setting up the schedule for the Swine Flu Extract implies that practices consent to have their relevant Swine Flu data extracted.

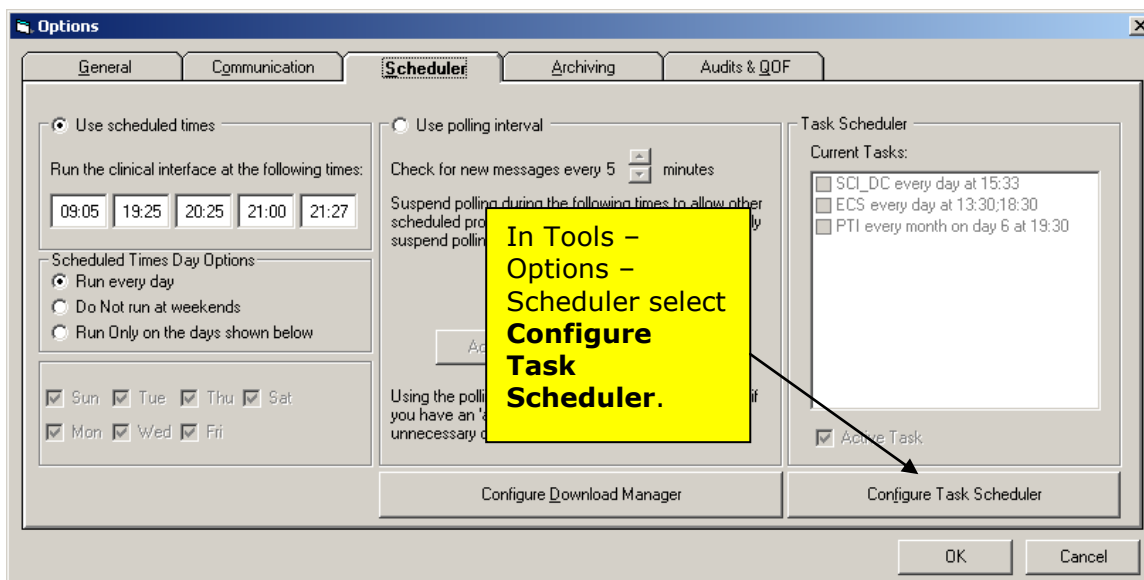
Points to note:

- You must check the log file to make sure the previous extract has successfully run. See "Checking for Errors – Log File" on page 11.
- Although Influenza data can be added retrospectively, the extract counts are based on data entry dates the last 24 hours so will not pick up any back-dated information. This is not deemed to be an issue, as the extract report is designed to trace the progress of influenza for pandemic management.
- Influenza data that has been subsequently edited or deleted since that day's extract was run is not updated in the extract files. Retrospective changes to this data type are rare and therefore are not expected to have a significant impact on statistics.
- As it cannot be guaranteed that the extract is run on a daily basis e.g. bank holidays/weekends, the extract report will include data since the last extract was run and split the data into files covering each 24-hour period. This process will only regress to a maximum of 14 days.
- **Data is collected by system date of entry rather than event date.**

Setting up the Automatic Extract

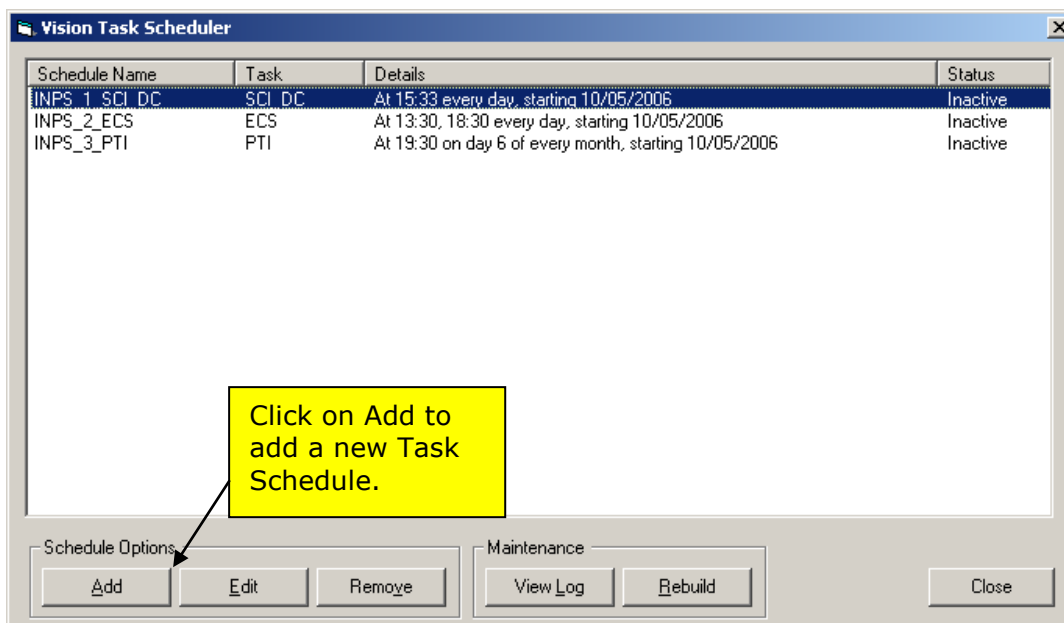
You need to set up a scheduled task in GP communicator so that the Swine Flu Extract process can run automatically (this is the same as setting your SCI DC/ECS/PTI scheduled tasks):

1. In GP Communicator, go to **Tools – Options**.
2. Click on the **Scheduler** tab.



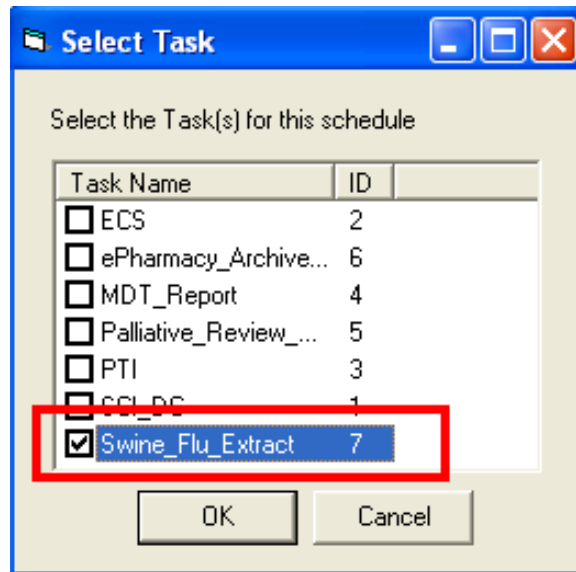
Tools – Options - Scheduler

3. In the Task Scheduler section, select **Configure Task Scheduler**. This shows you your current scheduled tasks and allows you to edit them if required.
4. Click on **Add**.



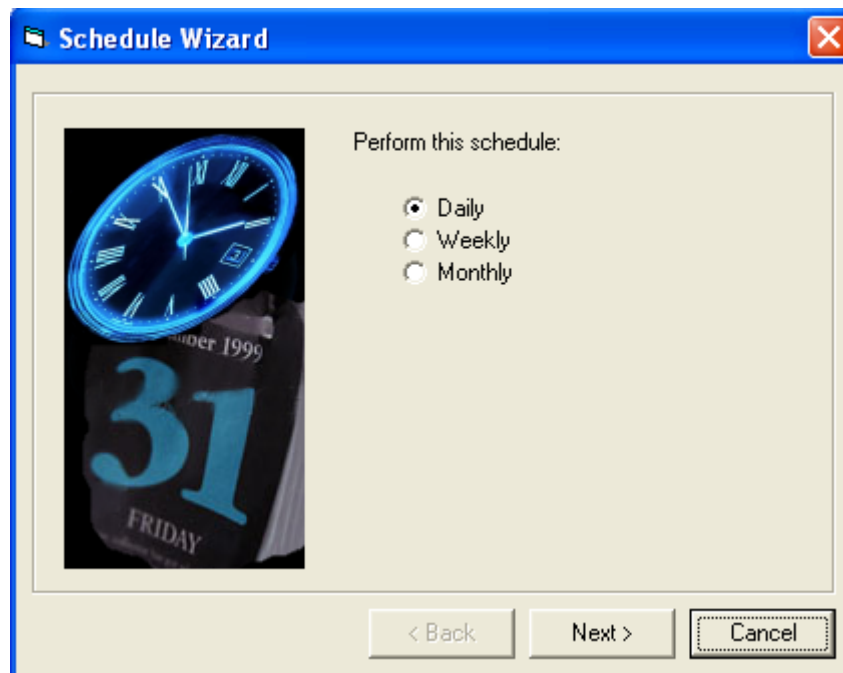
Vision Task Scheduler

5. In the Select Task window, select **Swine_Flu_Extract**.



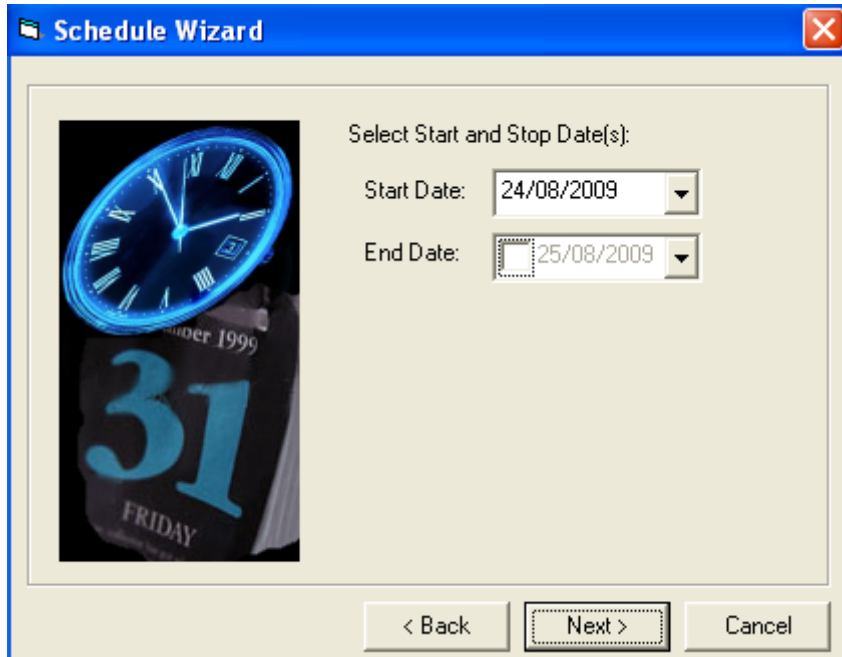
Select Task – Swine_Flu_Extract

6. Click OK.
7. Next, the Schedule Wizard displays. Choose to perform this schedule **Daily**, then click **Next** to continue.



Schedule Wizard – Select Daily

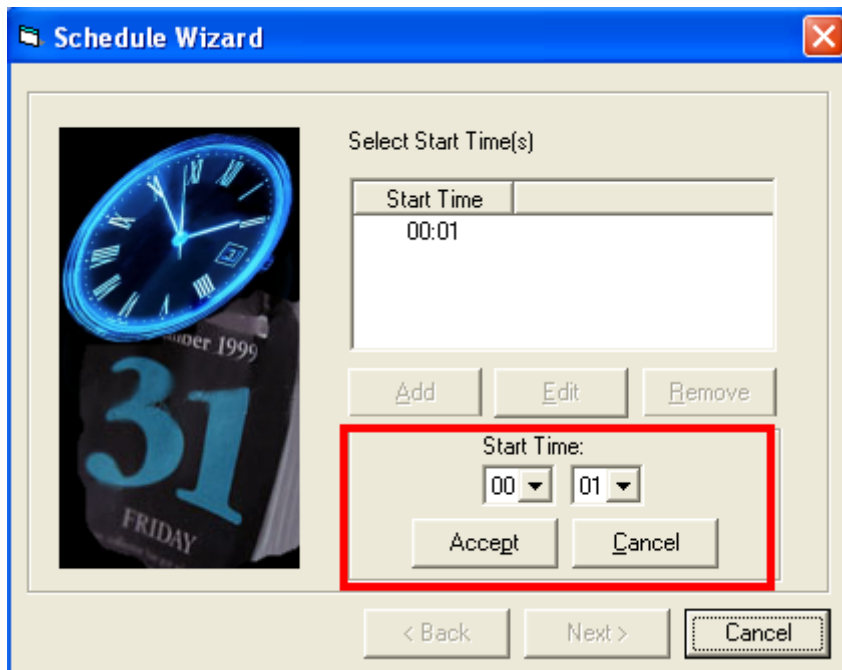
8. Select a start date i.e. today's date (do not select an end date) and click **Next** to continue.



Schedule Wizard - Start Date

9. Next to select start time, click on **Add** then choose a start time as soon as possible after midnight. For VES practices the VES team will specify this time during set up.

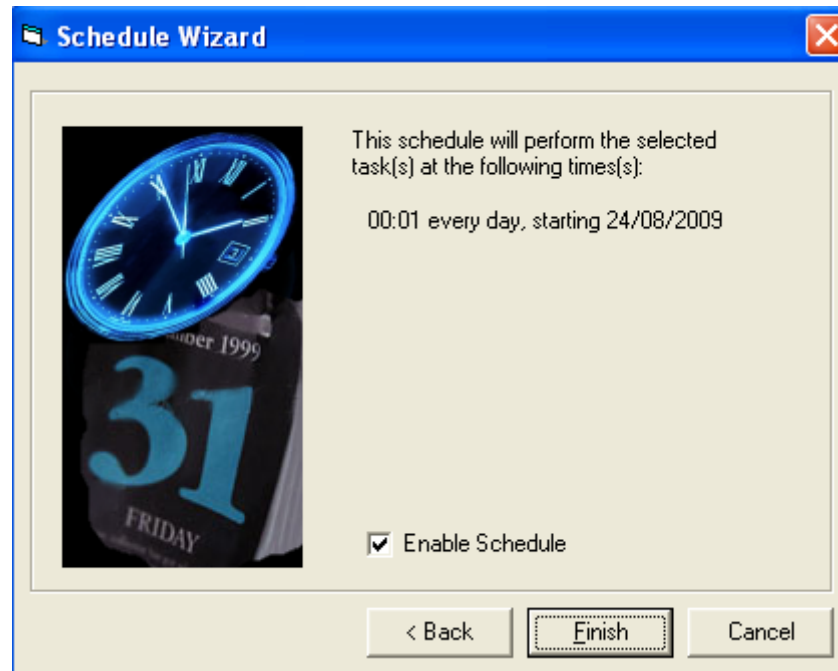
Note - The time must not coincide with any other tasks (e.g. ECS, PTI, Backup, Auto-reindex, etc.) as you must have exclusive access to Vision.



10. Schedule Wizard – Select Start Time

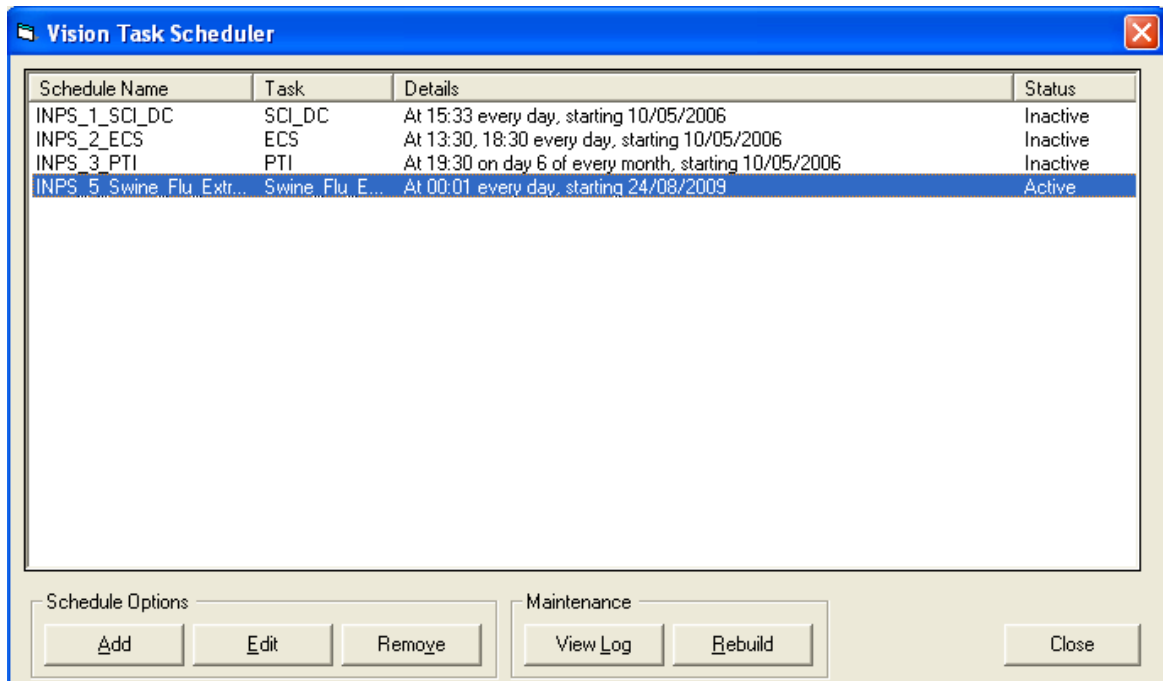
11. Click **Accept** to save and then **Next** to continue.
12. You are then given confirmation of the scheduled task. **Please ensure that you tick the Enable Schedule box.**

13. Click on **Finish**.



Schedule Wizard – Confirmation – Enable Schedule

14. You are taken back to the Vision Task Scheduler screen where you can see your Swine Flu Extract task has been added. Please check that the details of this are correct.



Task Scheduler – Swine Flu task added

15. Click **Close**, then OK to be taken back to the GP Communicator main screen.

Note - If for some reason the Auto extract fails to run for more than one day, the next time it runs it will continue from where it stopped

after the previous run and will produce one file for each missed day, provided the number of days is less than 14.

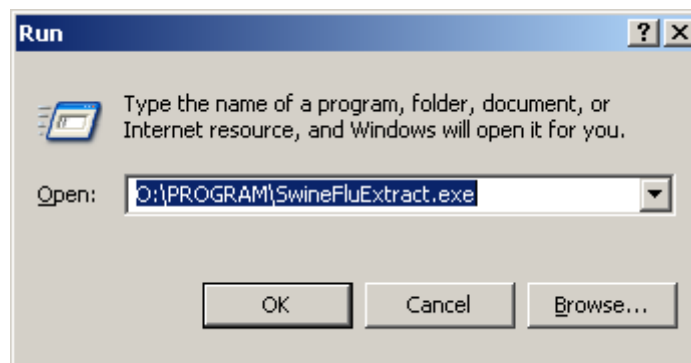
If more than 14 days have elapsed since the last automatic extract, only the last 14 days are extracted and you must run the manual extract to pick up data recorded during the missing time period.

16. You need to check that the last extract has run successfully on a daily basis. See "Checking for Errors – Log File" on page 11.

Running the Manual Extract

You are also able to run the Swine Flu Extract process manually if required. This would normally be done only if you are having problems with the automatic process.

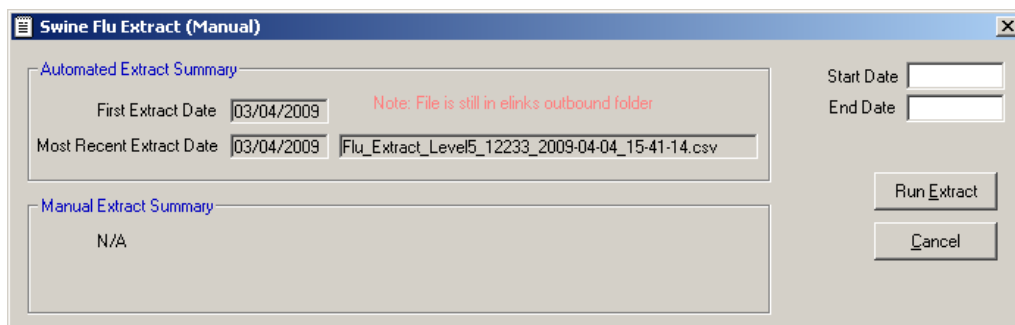
1. Go to **Start – Run** and type O:\Program\SwineFluExtract.exe in the Open box.



Start – Run – Open – O:\Program\SwineFluExtract.exe

Tip - You might like to create a shortcut on your desktop for this

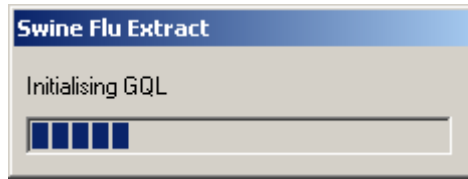
2. Click OK.
3. The Swine Flu Extract (Manual) window is displayed. This gives details of the last automated and manual extract. It will also state if the last extract of either type is still in the eLinks outbound queue.
4. Enter a date range for the extract by filling in the start date and the end date. A single report will be generated with a summary of all data within this time frame.



Manual Extract Screen

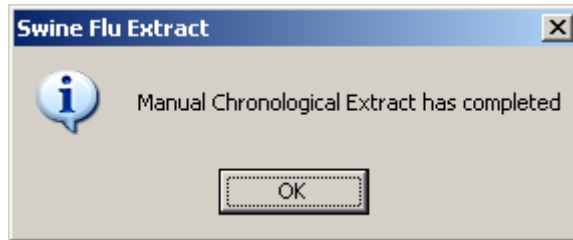
5. Click on **Run Extract** to start the extract. You **do not** need exclusive access to Vision to run the manual extract. If you are not currently logged into

Vision, you will be asked to enter your Vision user name and password. A progress bar is displayed as the extract process is running.



Extract progress bar

6. Once the extract has completed, you are prompted with the following message *Manual Chronological Extract has completed*. Click OK.



Manual Extract Completion Message

7. The extract name takes the form `Flu_Extract_Level5_nnnnn_CCYY-MM-DD_hh-mm-ss_A.csv`, where `nnnnn` represents your practices National Identifier and the remainder of the name denotes the date and time of its creation. The suffix `_A` indicates it is a manual extract. This manual process does not affect the last run auto extract and the next time the auto extract runs, it will continue from the last day it ran.

Checking for Errors – Log File

A record of any unsuccessful extracts is recorded in **P:\Extracts\General**. The `P:\Extracts\General` folder should be checked for errors on a **daily** basis. You might like to put a shortcut to this on your desktop. **There will only be a file in this folder if there is an error**, you can open the file to see the reason for the error. If there is more than one extract with an error, it will be listed here. Log files are removed once a successful extract is generated.

The file name is constructed from the practice code and the time and date that the extract was run.

Extract Log file name example:

`Flu_Extract_Level5L12345L2009_08_24_00-01-48.log`

Note – Depending on the error reason, you might like to run a manual extract to test the extract process.
